



# How big a battery is usually used for a 48v inverter





## How big a battery is usually used for a 48v inverter

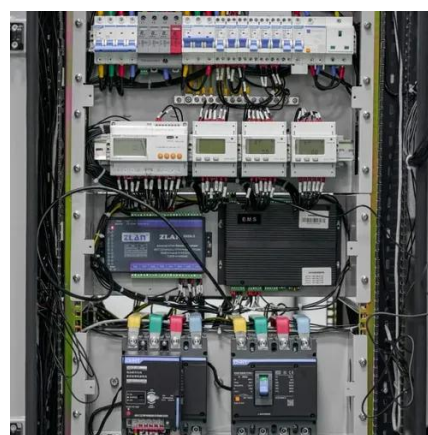


### What Size Lithium Battery Do I Need to Run a 5000W Inverter?

When it comes to powering a 5000W inverter, selecting the appropriate lithium battery is crucial for achieving optimal performance and reliability. In this comprehensive guide, we will delve into the ...

### Battery and Inverter Sizing Guide 2025: How to Match Solar ...

Learn how to size and pair a battery with your solar inverter in 2025. Discover key ratios, examples, and Growatt solutions for optimal solar + storage system design.



### Calculate Battery Size For Any Size Inverter (Using Our Calculator)

Pairing a right size capacity battery for an inverter can be a bit confusing for most the beginners So I have made it easy for you, use the calculator below to calculate the battery size for ...

### [How Many Batteries Do I Need for a 48V Inverter?](#)

To determine how many batteries you need for a 48V inverter, you must consider the inverter's power rating, the capacity of the batteries, and your energy usage requirements. For ...



### [Calculate Battery Size for Inverter Calculator](#)

The Calculate Battery Size for Inverter Calculator helps you determine the optimal battery capacity needed to support your inverter system. By inputting critical parameters such as power ...



### [What size battery do I need to run a 3000W inverter?](#)

A 3000W inverter typically requires a 12V 600Ah, 24V 300Ah, or 48V 150Ah lithium battery for 1-hour runtime at full load, assuming 90% inverter efficiency and 80% depth of discharge (DoD). Actual ...



### [Can an Inverter Be Too Big for Your Battery System?](#)

A 48V 100Ah lithium battery (4.8kWh) paired with a 5000W inverter works because  $48V \times 100Ah \times 1C = 4800W$ . Always account for inverter efficiency losses (typically 85-95%).



## Choosing the Right Battery Size for a



## 1600V 48V Inverter: A ...

Summary: Selecting the correct battery size for a 1600V 48V inverter is critical for optimizing energy storage systems. This guide explores voltage compatibility, capacity calculations, and industry ...



## [What Size Battery Is Required for a 5000 Watt Inverter?](#)

Discover the battery size you need to keep a 5000 watt inverter running smoothly--easy math, clear steps, and pro tips for homes, RVs, and solar setups.

## How to Calculate the Right Battery Size for Your Inverter System

Calculating the correct battery size ensures that your inverter system can meet your power needs without leaving you in the dark during outages. An undersized battery may not provide enough ...





## Contact Us

---

For catalog requests, pricing, or partnerships, please visit:

<https://id2market.eu>

Phone: +34 910 56 87 45

Email: [info@id2market.eu](mailto:info@id2market.eu)

Scan the QR code to access our WhatsApp.

