



How big a battery should I use for a 500w inverter





Overview

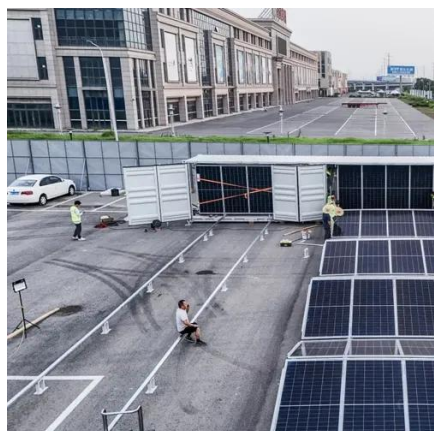
What is the Ideal Size Battery for a 500W Inverter?

The ideal size battery for a 500W inverter is generally between 100Ah and 200Ah, optimized for effective energy storage and sustained output. This capacity supports the inverter's continuous load, ensuring reliable performance. By inputting critical parameters such as power consumption, inverter efficiency, and desired usage time, this calculator provides a precise battery size. The right battery ensures your inverter runs smoothly, especially when powering devices like laptops or small appliances. Let's first take a look at the amp drawn from the battery. How Many Amps Does a 500-watt. But one of the most common questions in 2025 remains: How do you size and pair a battery with your inverter?

In this advanced guide, we'll expand on our earlier article, [How to Choose the Right Solar Inverter for Your Home](#), by focusing specifically on battery integration.



How big a battery should I use for a 500w inverter



How to Calculate the Right Battery Size for Your Inverter System

To help you find the perfect match, here's a step-by-step guide to calculate battery size based on your power needs and inverter specifications. Step 1: Determine Your Power Requirements

Calculate Battery Size For Any Size Inverter (Using Our Calculator)

To recharge your battery from time to time you would need the right size solar panel to do the job! Read the below article to find out the suitable solar panel size for your battery bank



[Calculate Battery Size for Inverter Calculator](#)

For instance, if your power consumption is 500 watts, the usage time is 4 hours, and the inverter efficiency is 90%, the calculator might suggest a battery size of approximately 222 Ah. ...

[How to Choose The BEST 500w Full Load Solar Power ...](#)

Here is a quick but comprehensive guide to choosing the right inverter and battery for 500w load.



[How to Determine Battery Sizes when using an Inverter](#)

In the end you need to determine a battery or battery pack that is capable of running your load for as long as you anticipate. First, our DC to AC Amperage Conversion Calculator takes into ...



Calculate the Ideal Battery Size for Your Inverter with our Battery to

For a quick and convenient way to calculate the required battery size for your inverter, you can use our Inverter Battery Size Calculator. Simply input the power requirement, desired ...



How to Size and Pair a Battery with Your Inverter in 2025: Advanced

Learn how to size and pair a battery with your solar inverter in 2025. Discover key ratios, examples, and Growatt solutions for optimal solar + storage system design.



[Choosing the Right Battery for a 500-Watt](#)



Inverter

However, to optimize the performance of an inverter, selecting the right battery is paramount. This article delves into the considerations for choosing a battery suitable for a 500-watt inverter, ensuring a ...



- ✓ IP65/IP55 OUTDOOR CABINET
- ✓ WATERPROOF OUTDOOR CABINET
- ✓ 42U/27U
- ✓ OUTDOOR BATTERY CABINET

Best Battery For 500w Inverter [Updated On: January 2026]

What is the Ideal Size Battery for a 500W Inverter? The ideal size battery for a 500W inverter is generally between 100Ah and 200Ah, optimized for effective energy storage and sustained ...

What Battery for a 500-Watt Inverter

Let's look at what size of battery you'll need. What Battery Size for a 500-Watt Inverter? The type and size of battery needed for a 500-watt power inverter will depend on several factors, such as the ...





Contact Us

For catalog requests, pricing, or partnerships, please visit:

<https://id2market.eu>

Phone: +34 910 56 87 45

Email: info@id2market.eu

Scan the QR code to access our WhatsApp.

