



# How big a solar panel bracket should I use for 200w





## Overview

---

Most 200-watt solar panels on the market today measure roughly 3. Thickness is usually around 1 to 1. You'll want options that not only enhance performance but also stand up to the elements. With innovative designs and robust materials on the market, your decision can greatly impact. Each 200-watt solar panel requires a 20-amp breaker or fuse. Below, we break down the key considerations and provide actionable recommendations to ensure a secure, efficient installation. Whether you're planning to power your home, RV, or a small off-grid cabin, knowing the size of the panel can help you.



## How big a solar panel bracket should I use for 200w

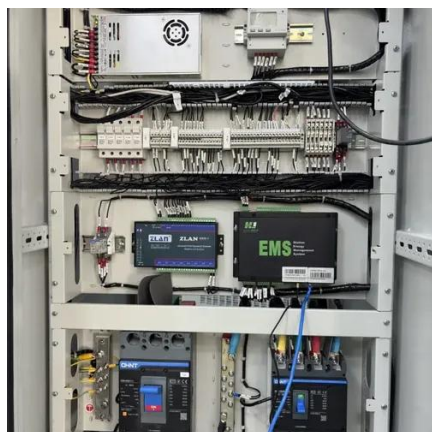


### [Solar Panel Mounting Brackets: A Complete Guide \(2025\)](#)

Every building and weather environment requires its own unique solar panel bracket setup. The ideal bracket choice depends on the kind of roof you have, combined with local weather ...

### **Solar Panel Mount Brackets, Adjustable Solar Panel Stand 2 Set 10° ...**

Easy to Install: The aluminum solar panel tilt mounting bracket does not take up much time, as the structural components are already largely assembled; Mounting bracket with the supplied screws ...



### [What Size Breaker Do You Need For A 200-Watt](#)

A rule of thumb used to size breakers is that they should be 125% the size of the output of the solar panels. Sizing a breaker for a single solar panel is simple.

### [What Size Breaker Do You Need For A 200-Watt](#)

Complete 200W solar panel guide covering real performance, installation, best brands, and system requirements. Expert tested with actual data for 2025.



## 10 Best Solar Mounting Brackets for Optimal Panel Performance in 2025

With dimensions of 3.94 x 2.48 x 1.7 inches and a service life of up to 25 years, these brackets support panels ranging from 50W to 150W.



## 200W Solar Panel Complete Guide 2025: Performance & Best Brands

Complete 200W solar panel guide covering real performance, installation, best brands, and system requirements. Expert tested with actual data for 2025.



## [How Many Mounting Brackets Does A Solar Panel Need](#)

The number of mounting brackets required for solar panels depends on factors like panel size, roof type, and mounting system design. Below, we break down the key considerations and provide actionable ...



## Standard Solar Panel Sizes And



## Wattages (100W-500W Dimensions)

You can find typical dimensions of 100W, 150W, 170W, 200W, 220W, 300W, 350W, 400W, and 500W solar panels summarized in the chart below. But, just to emphasize the problem, let's have a ...



### How big is a 200W solar panel?

Most 200-watt solar panels on the market today measure roughly 3.5 to 4 feet long by 2 to 2.5 feet wide. Thickness is usually around 1 to 1.5 inches.

### [How Big is a 200W Solar Panel? Key Facts and Insights](#)

In this article, we will explore the physical dimensions of a 200W solar panel, typically ranging from 1.6 to 1.7 square meters. We will also discuss how these dimensions affect installation ...



### [Updated Adjustable Solar Panel Mounting Brackets 5-8 ...](#)

Updated adjustable multi-piece solar panel mounting brackets fit 5-8 panels (200W-400W) with flexible tilt adjustment for secure outdoor solar installs.



## Contact Us

---

For catalog requests, pricing, or partnerships, please visit:

<https://id2market.eu>

Phone: +34 910 56 87 45

Email: [info@id2market.eu](mailto:info@id2market.eu)

Scan the QR code to access our WhatsApp.

