



How big a solar panel does a 120ah battery require





Overview

To effectively charge a 120Ah battery, you typically need around 300W of solar panels. Use one 300W panel, two 150W panels, or three 100W panels. Ensure your configuration fits your RV space. Also, consider charging times and usage scenarios to optimize efficiency and performance. Enter battery capacity in amp-hours (Ah): I have already put 120ah for you. VoltX 12V 160W Fixed Solar Panel. In this article, we'll guide you through the key factors to consider when sizing a solar panel for a 120Ah battery, including important calculations, different battery types, and practical recommendations for optimal performance. Before choosing the ideal solar panel, it's essential to understand. A 120Ah battery holds a fair chunk of energy, but getting it properly charged needs the right setup — too small a panel and you'll be stuck waiting all day, too big and you're wasting space and money. So sit back, relax, and let's shed some light.



How big a solar panel does a 120ah battery require

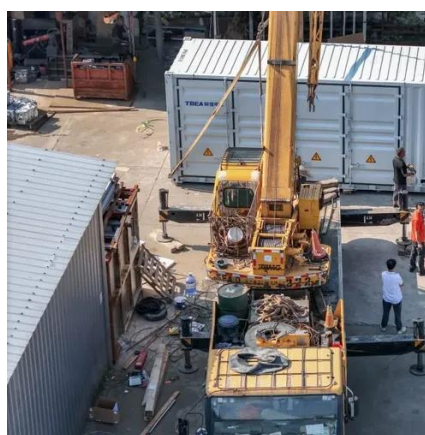


[What Size Solar Panel Do I Need to Charge a 12v Battery?](#)

For a 12V battery with 100Ah capacity, requiring 1200 watt-hours of energy, using 100-watt panels with 5 peak sun hours daily, the calculation looks like: $1200 \text{ Wh} \div (100\text{W} \times 5\text{h}) = 2.4$ panels. This suggests ...

Calculate The Right Size Solar Panel To Charge A 120Ah Battery

What Size Solar Panel Do I Need to Charge a 120Ah Battery? To charge a 120Ah battery effectively, you typically need a solar panel rated between 100W to 300W, depending on various ...



[What Size Solar Panel To Charge 120ah Battery? \(Calculator\)](#)

For a 12V 120Ah battery, you would need around 300W of solar panels, assuming your location receives about 5 hours of peak sun. You can ...



[How many solar panels can I use for a 120ah battery](#)

To charge the 120Ah battery at 12 volts effectively, one needs to feed in 1440Wh ($12\text{V} \times 120\text{Ah}$). Thus, multiple panels might be necessary to achieve full capacity, depending on efficiency ...



What size solar panel do I need to charge 120Ah lithium battery?

Choosing the right size solar panel to charge a 120Ah lithium battery is crucial for ensuring optimal performance and efficiency. By considering factors such as wattage, sunlight ...



what size solar panel to charge 120ah battery , What Size Solar Panel

To charge a 120Ah battery properly, you'll usually need a solar panel that can deliver about 300 watts under standard conditions. This gives you enough power to replace the energy you ...



Best Solar Panel Size for 120Ah Battery , Gecko Solar Energy

In this article, we'll guide you through the key factors to consider when sizing a solar panel for a 120Ah battery, including important calculations, different battery types, and practical ...



What size solar panel to charge



120ah battery? - Solar Website

In general, a 120Ah deep-cycle lead-acid battery would require a 200 watt solar panel to recharge from 50% Depth of Discharge (DOD) if we assume 4 peak-sun-hours per day. It would take one day to ...



[What Size Solar Panel To Charge 120ah Battery? \(Calculator\)](#)

Use our solar panel size calculator to find out what size solar panel you need to charge 120ah battery in desired time.

[Solar Panel Size Calculator , Check Battery Charge Duration](#)

Required Solar Panel Size = $1800\text{Wh} / (5 \text{ hours} \times 4 \text{ hours}) = 1800\text{Wh} / 20\text{h} = 90\text{W}$. So, you would need a solar panel with at least 90W capacity to charge your 150Ah, 12V battery in 5 ...



[What Solar Panel Size Do You Need for a 120Ah Battery?](#)

For a 12V 120Ah battery, you would need around 300W of solar panels, assuming your location receives about 5 hours of peak sun. You can achieve this with three 100W panels, two 150W ...



Contact Us

For catalog requests, pricing, or partnerships, please visit:

<https://id2market.eu>

Phone: +34 910 56 87 45

Email: info@id2market.eu

Scan the QR code to access our WhatsApp.

