



# How big is the photovoltaic panel 353





## Overview

---

The typical 60-cell residential solar panel is about 5.25 feet wide, with a depth between 1 and 2 inches. But what is the wattage?

That is unfortunately not listed at all. 72-cell solar panel. Solar panel size is measured in watts (W) and indicates how much electricity the panel can produce under standard test conditions. However, the exact dimensions depend heavily on the panel's technology, wattage, and the manufacturer's design. Because the size of a standard solar panel can vary, a chart that outlines the wattage capabilities of each can be crucial when asking, how many solar panels do I need?

In order to avoid. For a residential solar panel, size is fairly consistent across manufacturers: 65 inches (1. Individual PV solar cells are thin slices.



## How big is the photovoltaic panel 353



### The Ultimate Guide to Solar Panel Size, Weight & Wattage (2025)

Find the exact solar panel size & weight in our 2025 guide. Our complete chart compares models by ft/cm and lbs/kg to help you plan your installation.

### Solar Panels Size & Weight (Including Commercial Dimensions)

A single residential solar panel typically has 60 PV solar cells and measures 5.4 feet by 3.25 feet (65 inches long by 39 inches wide). The panels are between 1.5 to 2 inches deep.



### Solar Panel Size & Dimensions Guide 2025 Complete Specs

A standard residential solar panel measures 65-66 inches long by 39-40 inches wide by 1.5-2.0 inches thick, covering approximately 17.5-18.3 square feet. These 60-cell panels weigh 40-46 ...

### Standard Solar Panel Sizes And Wattages (100W-500W Dimensions)

The goal here is to get to the average solar panel size by wattage. You can find typical dimensions of 100W, 150W, 170W, 200W, 200W, 220W, 300W, 350W, 400W, and 500W solar panels summarized ...



Deye inverters and Deye batteries are more compatible.

### [Solar Panel Size Guide \(with 4 Charts\)](#)

Solar panels for homes average 250 to 400 watts. Many portable solar panels for RV are in the 100 to 300 watt range. The physical size of the panels often correlate to the watts, the bigger the panels the ...

### **Solar Panel Size and Wattage Chart: Standard Sizes & Uses for Each**

Using a solar panel size chart can help you choose the best types of solar panels for your home or application. Because the size of a standard solar panel can vary, a chart that outlines the ...



### [How Big is a Solar Panel? The Solar Panel Size Guide](#)

For a residential solar panel, size is fairly consistent across manufacturers: 65 inches (1.65 meters) by 39 inches (1 meter) is the average solar panel size that you find on the roofs of houses. That is about ...

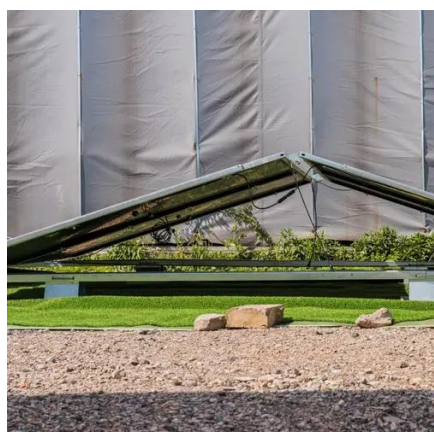


### [Solar panel size and weight: everything](#)



## you need to know

Although exact dimensions vary by manufacturer, home solar panels usually measure about 5.4 feet wide by 3.25 feet long (about 17.6 square feet), with a depth of less than two inches.



## The Ultimate Guide to Solar Panel Dimensions and Sizes

In this guide, we covered everything about solar panel dimensions and sizes, including different types of panels, their wattage, typical measurements, and how to choose the right size for ...

## Detailed Guide to Solar Panel Size & Dimensions

The standard solar panel size is approximately 66 x 39 inches and typically contains 60 cells. For commercial use, panels are usually 77 x 39 inches with 72 cells, offering higher power output.





## Contact Us

---

For catalog requests, pricing, or partnerships, please visit:

<https://id2market.eu>

Phone: +34 910 56 87 45

Email: [info@id2market.eu](mailto:info@id2market.eu)

Scan the QR code to access our WhatsApp.

