



How can photovoltaic panels be equipped with straight-line lights





Overview

Installing a straight solar light involves several key steps to ensure proper functionality and efficiency. Evaluate your space for sunlight exposure, 2. Identify the ideal mounting height, 3. Each of these elements plays a. Creating a compliant pv system single-line diagram (SLD) is a critical skill for any electrician working in solar. It captures and converts sunlight into electricity, which is then stored in batteries for use when needed, such as during the night or on cloudy days. The efficiency of solar panels has improved dramatically, making them a viable option. It is advisable to mark the net width of your solar array, and with a chalk line, mark vertical lines up the roof to indicate the right and left hand side of the array. Aside from helping you properly install the PV.



How can photovoltaic panels be equipped with straight-line lights



How to install and measure the straight line of photovoltaic ...

It is advisable to mark the net width of your solar array, and with a chalk line, mark vertical lines up the roof to indicate the right and left hand side of the array.

[How to install a straight solar light . NenPower](#)

Installing a straight solar light involves several key steps to ensure proper functionality and efficiency.

1. Evaluate your space for sunlight exposure, 2. Identify the ideal mounting height, 3. ...



[What Is a Solar Lighting System and How Does It Work?](#)

In this article, we'll take a closer look at solar lighting systems, how they work, and where they can be used to provide reliable, efficient lighting solutions.



51.2V 300AH

[Why Straight-Line Photovoltaic Panel Installations Are ...](#)

Recent data from the National Renewable Energy Laboratory (NREL) reveals that properly aligned PV systems can boost energy output by 12-18% compared to irregular layouts.



How to add light to solar panels

Reflectors tailored to optimize light utilization can increase energy yield significantly without having to expand the solar panel array itself. Integrating artificial lights, such as LEDs, to ...



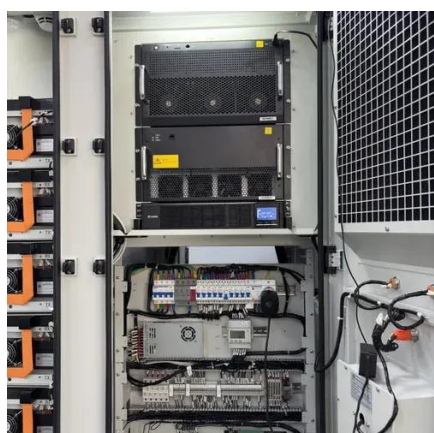
The reason why photovoltaic panels are installed in a straight line

In the northern hemisphere, the general rule for solar panel placement is, solar panels should face true south (and in the southern, true north). Usually this is the best direction because solar panels will ...



[A Comprehensive Guide to Photovoltaic Lighting Systems](#)

Photovoltaic lighting systems have emerged as a viable solution for providing clean and renewable energy for lighting purposes. This article aims to provide an overview of photovoltaic ...



The Ultimate Guide to Solar Lights



and Solar Photovoltaic Lighting Systems

The major components of a photovoltaic lighting system are the solar panel, the battery, the charge controller, and the lighting source. Solar lights offer a lot of benefits, which explains why ...



[Solar Panel And Light: Lighting Explained](#)

These systems can be equipped with sensors that adjust lighting based on ambient light levels or motion detection, ensuring optimal energy use. Additionally, smart solar lights can be controlled remotely, ...

[How to Create a Single-Line Diagram for a PV ...](#)

A practical guide for creating a clear and compliant single-line diagram (SLD) for a solar PV system, a critical component for permitting and installation.





Contact Us

For catalog requests, pricing, or partnerships, please visit:

<https://id2market.eu>

Phone: +34 910 56 87 45

Email: info@id2market.eu

Scan the QR code to access our WhatsApp.

