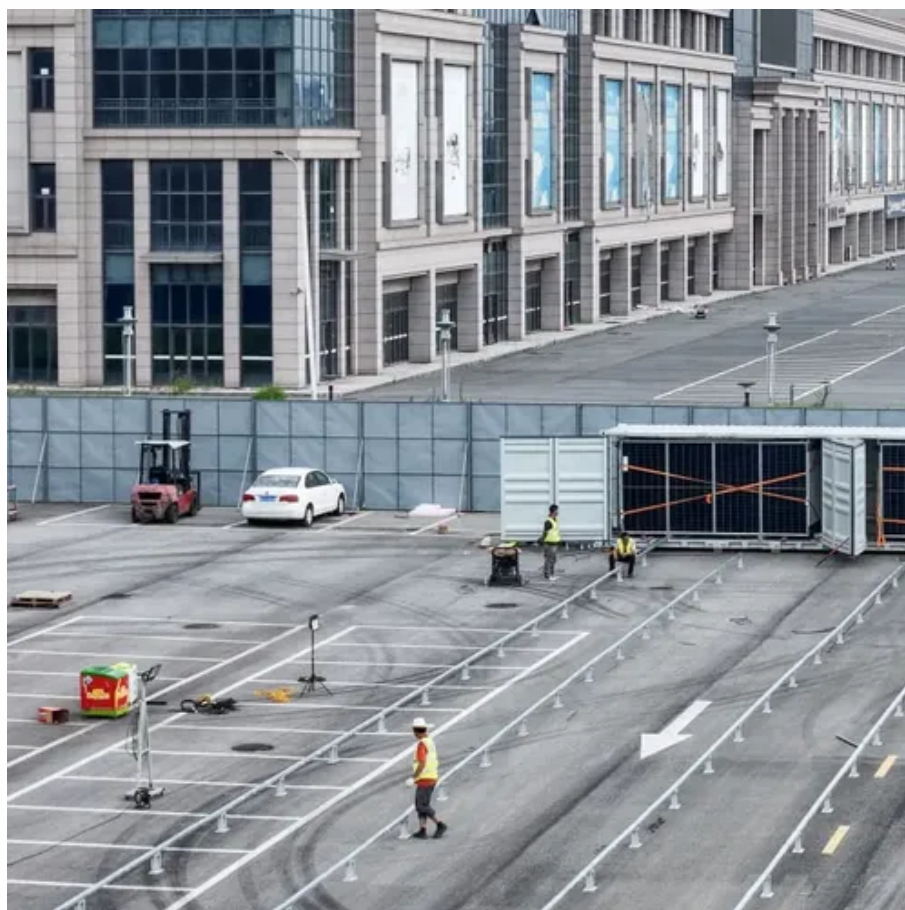




# How does a base station achieve wireless communication





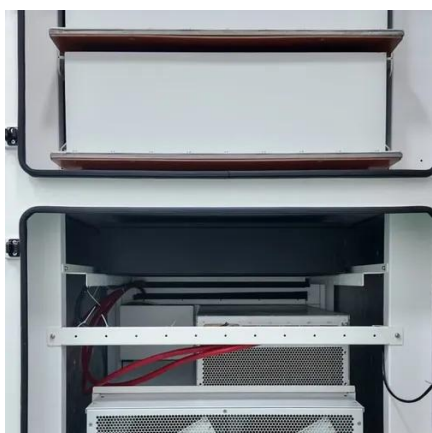
## Overview

---

A base station plays a pivotal role in the realm of telecommunications, acting as the cornerstone of connectivity. A base station is an integral. The present-day tele-space is incomplete without the base stations as these constitute an important part of the modern-day scheme of wireless communications. Base stations are the foundational elements that make this connectivity possible, acting as fixed points that bridge the gap between a mobile device's radio signal and the global wired. Simply put, a base station (BS) is a wireless transceiver device in a mobile communication network that provides wireless coverage and communicates with mobile terminals like your phone.



## How does a base station achieve wireless communication



### [What Is a Base Station? Definition and How It Works](#)

Its function is to transmit and receive radio signals to and from wireless client devices. The base station acts as a converter, taking radio waves from a mobile phone and transforming them ...

### **What is a Base Station? -- From Communication Core to Thermal ...**

Simply put, a base station (BS) is a wireless transceiver device in a mobile communication network that provides wireless coverage and communicates with mobile terminals ...



### [What are Base Station in Telecommunications?](#)

Base stations contain several key parts. The antenna sends and receives radio energy. The transceiver handles signal modulation. The baseband processor converts signals to digital form. ...

### [What Is Base Station In Wireless Communication?](#)

In wireless communication, a base station is a critical component that enables wireless communication between devices. It serves as a central point of connection for multiple devices, ...



## [Understanding Base Stations: The Backbone of Wireless ...](#)

A base station is a fixed communication infrastructure that connects mobile devices (such as smartphones, tablets, or IoT devices) to a network, enabling wireless communication.

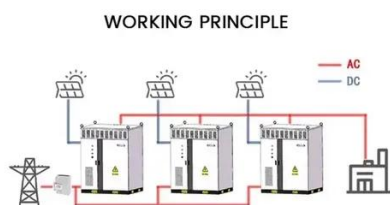
## [Base Station's Role in Wireless Communication Networks](#)

The base station transmits and receives signals, ensuring seamless communication over radio frequencies. In essence, it acts as the intermediary between the user and the network, enabling ...



## **The Base Station in Wireless Communications: The Key to Modern**

Equipped with an electromagnetic wave antenna, often placed on a tall mast, the base station enables communication between mobile terminals (such as mobile phones or pagers) and the ...



## **What Is A Base Station?**



A base station is an integral component of wireless communication networks, serving as a central point that manages the transmission and reception of signals between cellular networks ...



## What Is the Role of a Base Station in Wireless Communication?

Base stations are critical components in wireless communication networks, serving as the intermediary between mobile devices and the core network. They play a vital role in ensuring ...

## Base Stations

Base stations form a key part of modern wireless communication networks because they offer some crucial advantages, such as wide coverage, continuous communications and an array of ...





## Contact Us

---

For catalog requests, pricing, or partnerships, please visit:

<https://id2market.eu>

Phone: +34 910 56 87 45

Email: [info@id2market.eu](mailto:info@id2market.eu)

Scan the QR code to access our WhatsApp.

