



How heavy is a 50 kilowatt photovoltaic bracket





Overview

Tracking Bracket: A tracking bracket for a large-scale solar power plant may weigh between 50 and 100 pounds per panel, depending on the design and the number of panels it is designed to support. How much does a solar panel weigh?

Solar panels usually weigh about 40 to 50 pounds. Installing high-efficiency solar panels can reduce the number of panels you need, which lightens the total load on. How heavy are each photovoltaic panel and bracket How heavy are each photovoltaic panel and bracket On average, polycrystalline panels weigh between 42-45 pounds each. Thin-film models are the lightest, but their efficiency is also much lower. However, the exact dimensions depend heavily on the panel's technology, wattage, and the manufacturer's design. In this blog post, I will delve into the factors that influence the weight of a typical PV support bracket and provide some insights into. lar panels on tile roof surfaces. These brackets are designed to blend in with the roof tiles,preserving the aesthetic appearance of the building while providin r panels to the mounting surface.



How heavy is a 50 kilowatt photovoltaic bracket



[Homeowner's Guide to Solar Panel Weight](#)

On average, a single 60-cell residential panel weighs between 40 and 50 pounds and measures around 3' by 5'. Most solar panel arrays have an overall load of about 3 to 4 pounds per ...

The Ultimate Guide to Solar Panel Size, Weight & Wattage (2025)

Standard residential solar panels are typically around 5.8 feet long by 3.5 feet wide and weigh between 40 to 50 pounds. However, the exact dimensions depend heavily on the panel's ...



[average photovoltaic solar panel weight guide](#)

Generally, standard residential photovoltaic panels weigh between 40 and 50 pounds (about 18 to 22 kilograms). This weight makes them manageable, but still requires careful lifting ...

[How heavy are each photovoltaic panel and bracket](#)

How heavy are each photovoltaic panel and bracket On average, polycrystalline panels weigh between 42-45 pounds each. Thin-film models are the lightest, but their efficiency is also much lower. A 36 ...



How Much Does an Average Solar Panel Weigh?

On average, most residential PV models weigh somewhere around 40 pounds. However, the material of the panel could either increase or decrease this number. Typically, a solar panel can weigh as low as ...



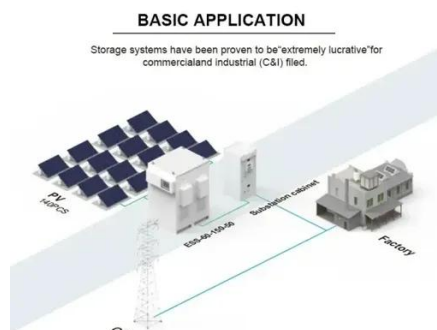
Your Go-To Photovoltaic Bracket Weight Statistics Table Template

That aluminum or steel framework holding your precious PV modules isn't just dead weight; it's the unsung hero determining your system's longevity and safety. Our photovoltaic bracket weight ...



How heavy is a 50 kilowatt photovoltaic bracket

A 10 kW system requires about 30 panels. Since the average residential solar panel weighs about 45 pounds and occupies about 18 square feet, the following calculations can be used to determine the ...

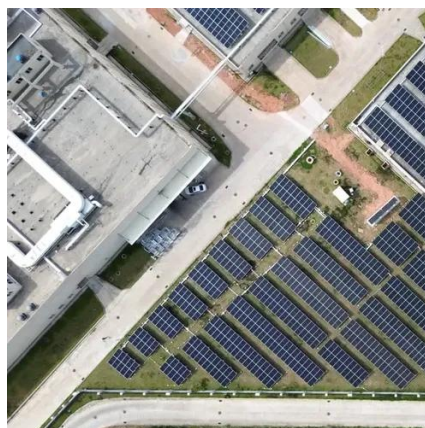


How Heavy Is a Photovoltaic Panel



with Bracket? Key Factors and

When planning a solar installation, one critical question often arises: "How heavy is a photovoltaic panel with its bracket?" The answer isn't just a number--it's a blend of engineering, material science, and ...



Photovoltaic bracket weight table

The loads acting on the basis of the photovoltaic module bracket mainly include: the weight of the bracket and the photovoltaic module (constant load), wind load,

[What is the weight of a typical PV support bracket?](#)

There are no specific industry standards for the weight of PV support brackets, as the weight can vary depending on the factors discussed above.





Contact Us

For catalog requests, pricing, or partnerships, please visit:

<https://id2market.eu>

Phone: +34 910 56 87 45

Email: info@id2market.eu

Scan the QR code to access our WhatsApp.

