



# How heavy is a 575w photovoltaic panel





## Overview

---

Standard residential solar panels are typically around 5.5 feet wide and weigh between 40 to 50 pounds. However, the exact dimensions depend heavily on the panel's technology, wattage, and the manufacturer's design. Understanding these specifications is crucial for determining roof. What is the average photovoltaic solar panel weight I should expect?

Generally, standard residential photovoltaic panels weigh between 40 and 50 pounds (about 18 to 22 kilograms). The real constraints are typically usable roof space after accounting for required 3-foot setbacks and obstruction clearances. Note: Your Enquiry will be sent directly to Power Maxma.



## How heavy is a 575w photovoltaic panel



### [Solar panel size and weight: everything you need to know](#)

Much like size, solar panel weight varies by technology and brand. Most of today's best home solar panels weigh between 40 lbs and 50 lbs each, slight differences in weight can be ...

### [How Much Do Solar Panels Weigh? 1.30 - 2,608.7 lbs Chart](#)

When figuring out how much weight do solar panels add to a roof, that would be quite useful data to have. All individual solar panels weigh less than 100 lbs. However, solar systems with 8kW rated ...



### [average photovoltaic solar panel weight guide](#)

Generally, standard residential photovoltaic panels weigh between 40 and 50 pounds (about 18 to 22 kilograms). This weight makes them manageable, but still requires careful lifting ...



## The Ultimate Guide to Solar Panel Size, Weight & Wattage (2025)

Find the exact solar panel size & weight in our 2025 guide. Our complete chart compares models by ft/cm and lbs/kg to help you plan your installation.



### [575 Photovoltaic panel specifications and dimensions](#)

The 144-cell bifacial panel is available in power range from 550 W to 575 W, with an efficiency of 21.4% to 22.4%. Its open-circuit voltage is between 50.2 V and 51.2 V and the short-circuit



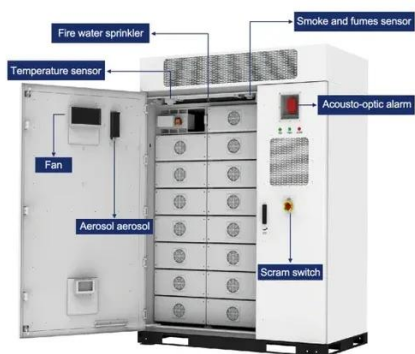
## How to Choose the Best 575W Solar Panel: A Complete Buying Guide

Weight: Typically 25-30 kg (55-66 lbs), requiring stronger racking systems on some roofs. [How to Choose a 575W Solar Panel: Step-by-Step Guide](#)  
[Determine Your Energy Needs: ...](#)



## Solar Panel Weight Guide

Some tiny portable panels weigh only 5 pounds, and heavy-frame panels can clock in at 62 pounds. However, these outliers don't appear on homes and businesses -- they're for unique ...



### [Solar Panel Size and Weight: How Big Are](#)



## Solar Panels?

Residential solar panels consist of around 60 solar cells and are roughly 5.5 feet long and 3 feet wide. Solar panels usually weigh about 40 to 50 pounds. Commercial solar panels are generally ...

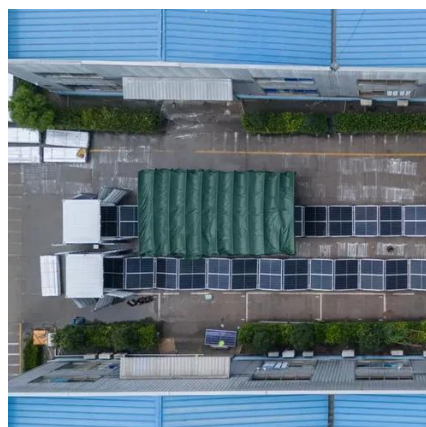


## Solar Panel Size & Dimensions Guide 2025 Complete Specs

A standard residential solar panel measures 65-66 inches long by 39-40 inches wide by 1.5-2.0 inches thick, covering approximately 17.5-18.3 square feet. These 60-cell panels weigh 40-46 ...

## **Power Maxma , Topcon, N-type 555-575W , Solar Panel Datasheet**

Power Maxma Solar Panel Series Topcon, N-type 555-575W. Detailed profile including pictures, certification details and manufacturer PDF.





## Contact Us

---

For catalog requests, pricing, or partnerships, please visit:

<https://id2market.eu>

Phone: +34 910 56 87 45

Email: [info@id2market.eu](mailto:info@id2market.eu)

Scan the QR code to access our WhatsApp.

