



How heavy is a square meter of photovoltaic panel





Overview

A typical residential solar panel is around 5.6m x 1m, which gives it a surface area of approximately 5.6. What is the average photovoltaic solar panel weight I should expect?

Generally, standard residential photovoltaic panels weigh between 40 and 50 pounds (about 18 to 22 kilograms). This weight makes them manageable, but still requires careful lifting during installation. However, it's not just the weight of the individual panels that matters—it's the



How heavy is a square meter of photovoltaic panel



[How Much Do Solar Panels Weigh? 1.30 - 2,608.7 lbs Chart](#)

All individual solar panels weigh less than 100 lbs. However, solar systems with 8kW rated capacity and above add more than 1,000 lbs to your roof. Not to worry, however.

[Solar Panel Size and Weight: A 2025 Guide \(with Examples\)](#)

Average Residential Panel Weight: Most panels weigh between **40 and 50 pounds**. The "Bridge" (Total Roof Load): A standard 20-panel residential system will add **800 to 1,000 pounds** of static ...



How Much Do Solar Panels Weigh?

Different manufacturers create solar panels of different weights. On average, solar panels weigh between 10 and 20 pounds per square meter. For a sound roof, this weight won't threaten the ...

Solar Panel Weight Guide

Some tiny portable panels weigh only 5 pounds, and heavy-frame panels can clock in at 62 pounds. However, these outliers don't appear on homes and businesses -- they're for unique ...



[Solar Panel Size And Weight: A Comprehensive Guide](#)

When considering residential solar panels, typical configurations consist of 60 cells measuring approximately 3.25 feet by 5.5 feet. These panels cover an area of 17.62 square feet and weigh



[Solar Panels Sizes and Weights \(All Sizes\)](#)

200-watt solar panels that are 10.56 kilograms and measure 1.64 meters long by 0.99 meters wide have an area of 1.63 square meters. They weigh 6.48 kilograms per square meter.



How Much Does a Solar Panel Weigh?

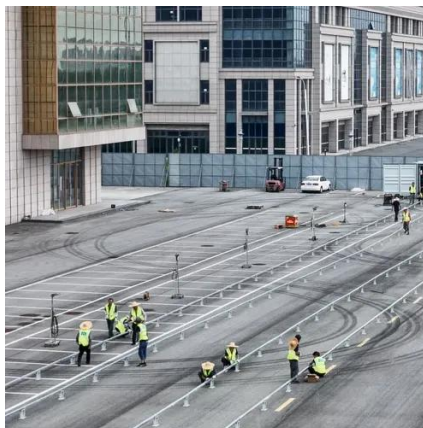
Solar panels typically weigh between 40 to 50 pounds per square meter, with variations based on the type and manufacturer. These weights are essential considerations when planning ...

How Much Does a Solar Panel Weigh?



Solar Panel Size, kg/sq.m., W/kg

A typical commercial solar panel weighs about 50 pounds (18.14 kg), and measures about 6.5 feet long by 3.5 feet wide (2 x 1.1 meters). which gives it a surface area of approximately ...



Modular design,
unlimited combinations in parallel
BUILT-IN DUAL FIRE PROTECTION MODULE



[Solar Panel Weight Guide - Solar Generation USA](#)

A typical residential solar installation with about 15-20 panels can weigh 300 to 450 kilograms (660 to 990 pounds) in total, which adds approximately 10 to 20 kilograms per square meter (2 to 4 pounds) ...

[average photovoltaic solar panel weight guide](#)

Generally, standard residential photovoltaic panels weigh between 40 and 50 pounds (about 18 to 22 kilograms). This weight makes them manageable, but still requires careful lifting ...





Contact Us

For catalog requests, pricing, or partnerships, please visit:

<https://id2market.eu>

Phone: +34 910 56 87 45

Email: info@id2market.eu

Scan the QR code to access our WhatsApp.

