



How is the battery of Lusaka Telecom base station





Overview

Compatible with micro cell base stations, this lithium battery supports the growing demands of 5G expansion—helping reduce downtime and keeping signals strong even during grid outages.

1 VRLA Batteries: Legacy but Still Widely Deployed Valve-regulated lead-acid (VRLA) batteries are mature, compatible with legacy charging systems, and relatively inexpensive. However, they are heavier, have shorter lifespans, and require more maintenance than modern alternatives. Whether it's enabling mobile connectivity, supporting emergency response systems, or providing data transmission in remote areas, these installations must operate. Telecom batteries for base stations are backup power systems using valve-regulated lead-acid (VRLA) or lithium-ion batteries. They ensure uninterrupted connectivity during grid failures by storing energy and discharging it when needed.



How is the battery of Lusaka Telecom base station

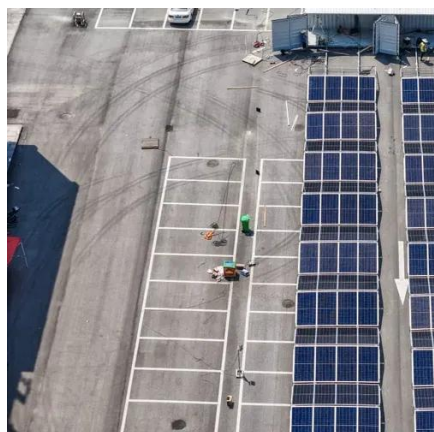


Understanding Backup Battery Requirements for Telecom Base Stations

Telecom base stations require reliable backup power to ensure uninterrupted communication services. Selecting the right backup battery is crucial for network stability and efficiency.

What Are the Key Considerations for Telecom Batteries in Base ...

Telecom batteries for base stations are backup power systems that ensure uninterrupted connectivity during grid outages. Typically using valve-regulated lead-acid (VRLA) or lithium-ion (Li-ion) batteries, ...



TELECOM BASE STATION BATTERY BACKUP SYSTEM

With over 3,000 charge cycles, this compact power solution is engineered for long-term value and field durability. Compatible with micro cell base stations, this lithium battery supports the growing ...

Securing Backup Power for Telecom Base Stations - leagend

Telecom base stations are often installed in remote locations or areas with unreliable grid infrastructure. Consequently, they rely heavily on backup power systems to bridge any power ...



Overview of Telecom Base Station Batteries

In terms of technical realization, telecom energy storage systems usually adopt lead-acid batteries or lithium ion solar batteries as the energy storage medium.



How to Choose the Right Backup Battery for Telecom Base Stations

Choosing the right telecom base station backup battery is a strategic decision that goes beyond upfront cost. Operators must weigh factors such as voltage requirements, cycle life, ...



Communication Batteries: Why Telecom Base Stations Have Unique ...

In modern telecom networks, ensuring uninterrupted connectivity is critical. The term "communication batteries" is often used ambiguously online, leading to confusion among operators, ...





COMMUNICATION BASE STATION LI ION BATTERY

Among various battery technologies, Lithium Iron Phosphate (LiFePO₄) batteries stand out as the ideal choice for telecom base station backup power due to their high safety, long lifespan, and excellent ...



What Powers Telecom Base Stations During Outages?

Telecom batteries for base stations are backup power systems using valve-regulated lead-acid (VRLA) or lithium-ion batteries. They ensure uninterrupted connectivity during grid failures ...

How Telecom Battery Systems Work: Architecture, Components, and ...

In the event of a grid failure, the system seamlessly switches to battery power without interrupting telecom operations. Once grid power is restored, the system automatically reverts to ...





Contact Us

For catalog requests, pricing, or partnerships, please visit:

<https://id2market.eu>

Phone: +34 910 56 87 45

Email: info@id2market.eu

Scan the QR code to access our WhatsApp.

