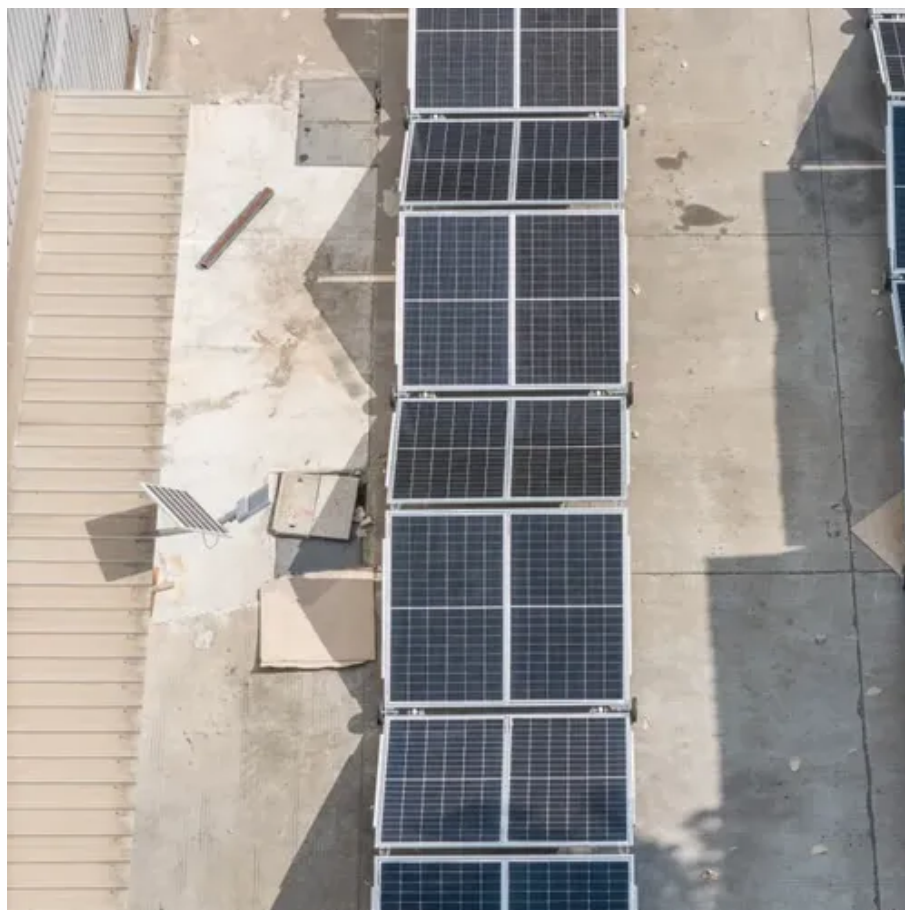




How is the communication equipment of East Asia base station





Overview

A base station is made up of antennas connected by cable to electronic (radio) equipment usually housed in a room or 'shelter'. Some base stations have radio communications dishes (shaped like a drum) that connect the base station to the rest of the base station network. top. The Air-to-Ground radio system is a VHF radio system used to communicate between ground stations and aircraft within a set radius from an airport in order to facilitate airline operations such as the exchange of passenger information or preparation of tools, spare parts, oil and fuel supplies and. The present-day tele-space is incomplete without the base stations as these constitute an important part of the modern-day scheme of wireless communications. They are referred to as cell towers or cellular antennas. These types of objects are an inevitability since they serve the purpose of. Generally speaking, a base station consists of three antennas, each transmitting signals in a 120 degree direction towards the surrounding area, which together provide seamless coverage of 360 degrees. If we carefully observe the bottom of the antenna, we will find strands of black thin wires. What are 2G and 3G networks?

Overview Mobile phones work by sending and receiving low power radio signals. The signals are sent to and received from antennas that are attached to radio transmitters and receivers, commonly referred to as mobile phone base stations. Flex PCBs play a critical role.



How is the communication equipment of East Asia base station



Base Stations

Murata supports high-speed and large-capacity communication by small and low loss capacitors, inductors and filters for high frequencies. Furthermore, Murata contributes to downsizing and saving ...

Asia Pacific Military Base Station Communication Antenna Market

Expansion of strategic base stations in maritime zones and high-altitude terrains increases demand for resilient, high-frequency communication antennas with long-range capabilities.

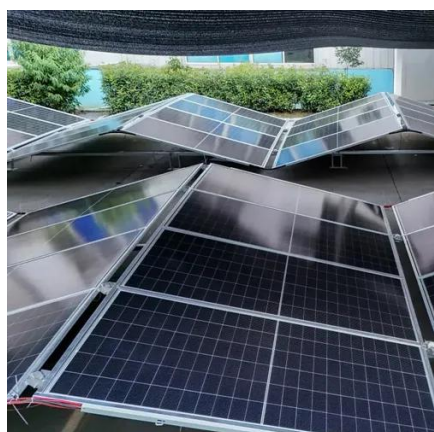


[Types of radio communication equipment](#) [, AEROTHAI Business](#)

Base stations form a key part of modern wireless communication networks because they offer some crucial advantages, such as wide coverage, ...

[Types of radio communication equipment](#) [, AEROTHAI Business](#)

The Ground-to-Ground radio system is a radio system used for communication between ground stations to assist in coordination between agencies in order to ensure the safe, expedient and efficient ...



Asia Pacific Communication Base Station Body Market: Drivers, ...

The Asia Pacific region's growth in the Communication Base Station Body Market is primarily fueled by rapid urbanization, extensive 4G/5G network rollouts, and rising smartphone ...

What Is A Base Station?

Base stations play a central role in two-way radio systems, such as citizens band (CB) radio and ham radio. In these setups, the base station serves as a fixed point of communication, ...



Baseband unit (BBU) DU / CU , Base Stations , Murata Manufacturing ...

A base station comprises a baseband unit (BBU) and a remote radio unit (RRU), and Murata's lineup of products for use in the distribution unit (DU) and central unit (CU) of baseband units is introduced here.

[What is Telecommunication Base Station .](#)



China Hop

Generally speaking, a base station consists of three antennas, each transmitting signals in a 120 degree direction towards the surrounding area, which together provide seamless coverage of 360 degrees.



Asia Pacific Communication Base Station Equipment Flex PCB

The demand for communication equipment has witnessed a sharp increase due to the expanding number of mobile subscribers, IoT devices, and the need for high-speed internet services.

Base Stations

Base stations form a key part of modern wireless communication networks because they offer some crucial advantages, such as wide coverage, continuous communications and an array of ...





Contact Us

For catalog requests, pricing, or partnerships, please visit:

<https://id2market.eu>

Phone: +34 910 56 87 45

Email: info@id2market.eu

Scan the QR code to access our WhatsApp.

