



How long does it take to fast charge a lithium battery





How long does it take to fast charge a lithium battery



Charging Speed of Lithium Battery: Slow Charging VS Fast Charging

Regarding slow charging vs fast charging of lithium batteries, fast charging typically involves high-power DC charging, capable of reaching 80% battery capacity within half an hour, while slow charging ...

How long does it take to charge a lithium battery?

How Long Does It Take to Charge a Lithium Battery? The charging time for a lithium battery varies significantly, generally ranging from 30 minutes to over 12 hours depending on factors ...



How Long to Charge a Lithium Battery?

Fast chargers, delivering 18W to even 100W in some cases, can often charge a smartphone from 0 to 50% in around 30 minutes, with a full charge taking about an hour. Tablets that ...



Calculating How Long It Will Take to Charge a Lithium Battery

Understanding how long it takes to charge a lithium battery isn't just a curiosity--it's a practical tool that directly affects performance, planning, and longevity. A properly matched charger ...



How Fast Can You Charge a Lithium-Ion Battery? Myths, Facts, and

A lithium-ion battery can charge at a rate of 1C, reaching full charge in about one hour. You can typically charge from 0% to 80% in around 40 minutes.

How Long to Charge a Lithium Battery for the First Time: Expert Guide

Fast Charging: Available for certain batteries, but should be used cautiously to avoid overheating. How Long Should You Charge a Lithium Battery for the First Time? Most lithium-ion ...



Charging a Lithium-Ion Battery: How Long It Takes, Tips, and Methods

It typically takes about 1 to 4 hours to fully charge a lithium-ion battery, depending on the device and charger used. Most smartphones fully charge in approximately 1.5 to 2.5 hours with a ...

How Long Does It Actually Take to



Fully Charge Lithium Batteries?

Charging times vary depending on the battery capacity and charger output, but most lithium batteries take between 1 to 4 hours to reach full charge under standard charging conditions.

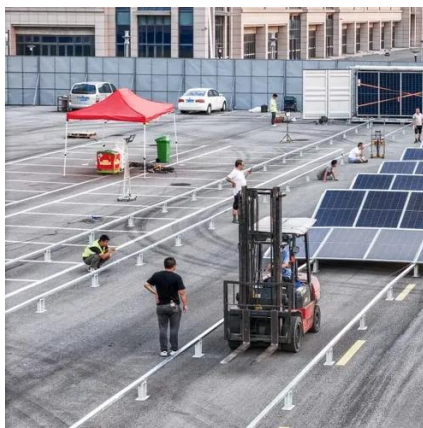


Slow Charger vs Fast Charger: Lithium Charge Speed

Charging a lithium battery typically takes between 2 to 6 hours, depending on the battery's capacity, the charger's output, and the battery's current state of charge (SOC).

how long does it take for a battery to charge

Older lead-acid batteries have a slow and complex charging process that can take 8+ hours. Modern lithium-ion batteries, however, are stars of efficiency.





Contact Us

For catalog requests, pricing, or partnerships, please visit:

<https://id2market.eu>

Phone: +34 910 56 87 45

Email: info@id2market.eu

Scan the QR code to access our WhatsApp.

