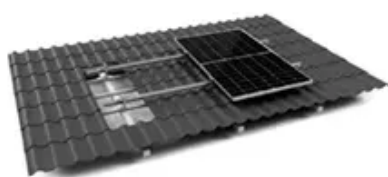




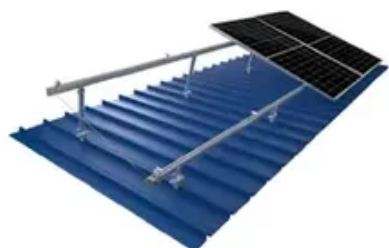
How many batteries can be connected in parallel to photovoltaic panels



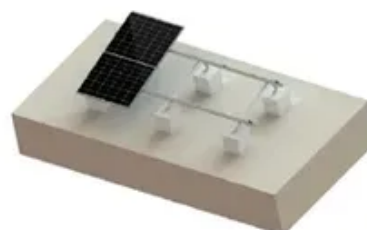
TILE ROOF SOLAR MOUNTING SYATEM



STANDING SEAM ROOF SYATEM



ADJUSTABLE TILT FLAT ROOF SYATEM



TRIANGLE FLAT ROOF SYATEM





Overview

In general, there is no limit to how many batteries can be connected in parallel as long as they are identical and have the same specifications. It's a smart way to enhance your system's efficiency and reliability. Imagine being able to run your appliances without worrying about draining your battery too quickly. This is often used in 12V systems with multiple panels as wiring 12V panels in parallel allows you to keep your charging capabilities 12V.



How many batteries can be connected in parallel to photovoltaic panels

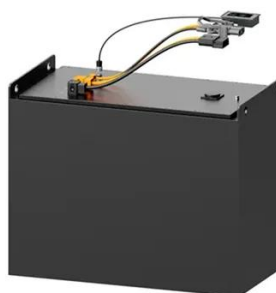


[Solar Battery Series & Parallel: Optimal Setup Guide](#)

You can connect batteries in series or parallel, with each option offering different tradeoffs. Much like connecting solar panels, it is a matter of what you are solving for, increasing the ...

[How to Connect Solar Panels in Parallel](#)

This setup is common in 12V or 24V systems where you want to safely charge batteries or run low-voltage inverters. In this guide, we'll walk you through how to connect solar panels in ...



[Parallel Connection of Batteries in DIY Solar Power ...](#)

A guide on safely connecting multiple batteries in parallel for DIY solar power systems, covering battery chemistry, cell count, and more

Know Everything about Wiring Batteries in Series VS Parallel

When it comes to increasing the total voltage output of a battery pack, a series connection of LiFePO4 batteries is often used. This involves connecting multiple cells in sequential order, with the positive ...



[How to Wire Solar Panel & Batteries in Parallel](#)

Two 12V, 10A, 120W solar panels are connected in parallel. They charge two 12V, 100Ah batteries that are also connected in parallel. During the day, solar panels power the AC load via the inverter and ...



[Basics of Wiring Parallel and Series](#)

To connect batteries in series, you would use two cables. The first cable connects the negative terminal of one battery to the negative terminal of the other battery. The second cable ...



How to Connect Multiple Batteries to Solar Panel: A Complete Guide ...

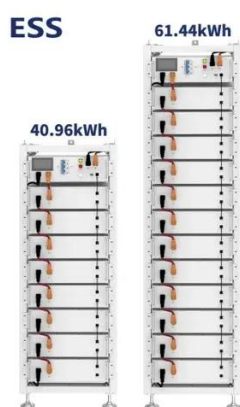
Parallel vs. Series Connection: In a parallel connection, batteries maintain the same voltage while increasing amp-hour capacity, which is ideal for longer energy availability. In a series ...



Series vs. Parallel , Renogy US



Learn about series, parallel, and series-parallel connections in solar panel systems. Understand why each connection type is used and how to set up your system accordingly. Discover the benefits and ...



Mixing solar panels - Dos and Don'ts

If you decide to apply a mixed connection, it's practical your solar array to comprise an even number of panels (a multiple of 2), for example, 4 panels (2 in series and 2 in parallel) or 6 panels (3 in series ...

Series vs. Parallel - Your Guide to Solar Panel and Battery and

One of the most important decisions you'll need to make is how to connect your solar panels and batteries. In this post, we'll explore the differences between connecting solar panels and batteries in ...





Contact Us

For catalog requests, pricing, or partnerships, please visit:

<https://id2market.eu>

Phone: +34 910 56 87 45

Email: info@id2market.eu

Scan the QR code to access our WhatsApp.

