

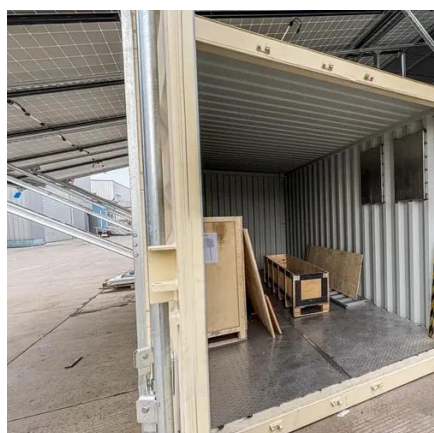


How many kilowatt-hours is equivalent to 550 watts of solar container outdoor power





How many kilowatt-hours is equivalent to 550 watts of solar containe



Watts to kWh Calculator

Kilowatt hour (kWh) = Watts (W)/1000 x the operating hours of the device. For example, assuming that your 200watt solar panel averages 5 hours of peak sunlight per day, and substituting ...

Watts to KWh Calculator

To convert watts (W) to kilowatt-hours (kWh), you need to understand the relationship between these two units. The formula to convert watts to kilowatt-hours is: $kWh = W/1000$. This formula shows that 1 ...



Watts to kWh conversion calculator

Power in watts (W) to energy in kilowatt-hours (kWh) calculator and calculation formula. Enter the power in watts, consumption time period in hours and press the Calculate button:

[Watts to kWh Calculator: Making Solar Simple](#)

It presents a formula for converting watts to kWh: For example, a 250W solar panel receiving 4 hours of sunlight produces 1 kWh ($250W \times 4h / 1000 = 1 \text{ kWh}$). Understanding this helps optimize solar ...



Kilowatt Calculator

Because 1 kilowatt = 1000 watts, we divide watt-hours by 1000 to convert to kilowatt-hours. 4. Can I use decimal numbers in the calculator? Yes.



Watts to Kilowatt-Hours (kWh) Conversion Calculator

A kilowatt-hour, expressed as kWh or kW·h, is a measure of energy that is equivalent to 1,000 watts of power for a 1-hour time period. Thus, to convert watts to kilowatt-hours, multiply the power in watts ...



W to kWh Calculator , Convert Watts to Kilowatt-Hours

Convert power in watts (W) to energy in kilowatt-hours (kWh) using time in hours. This tool helps you estimate electricity consumption for any appliance or device.



Energy consumption calculator , kWh



calculator

The energy E in kilowatt-hours (kWh) per day is equal to the power P in watts (W) times number of usage hours per day t divided by 1000 watts per kilowatt: $E(\text{kWh}/\text{day}) = P(\text{W}) \times t(\text{h}/\text{day}) / 1000$ (W/kW)

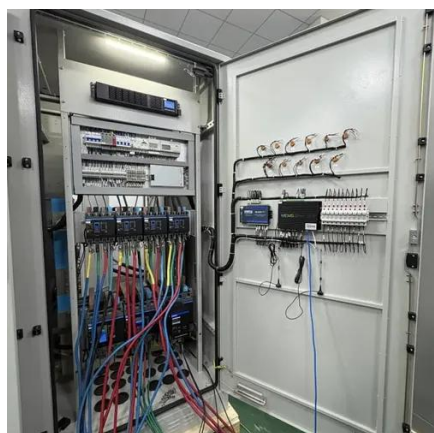


Convert 550 Watts to Kilowatts

How much power is 550 watts? What is 550 watts in kilowatts? This simple calculator will allow you to easily convert 550 W to kW.

Watts to kWh Calculator: Making Solar Simple

To convert w to kWh (Watts to Kilowatt Hours), you can use the Conversion formula: $\text{kWh} = (\text{W} * \text{hrs}) / 1,000$ or use our conversion calculator.



Watts to Kilowatt Hours (W to kWh) Conversion Calculator

To convert w to kWh (Watts to Kilowatt Hours), you can use the Conversion formula: $\text{kWh} = (\text{W} * \text{hrs}) / 1,000$ or use our conversion calculator.



Contact Us

For catalog requests, pricing, or partnerships, please visit:

<https://id2market.eu>

Phone: +34 910 56 87 45

Email: info@id2market.eu

Scan the QR code to access our WhatsApp.

