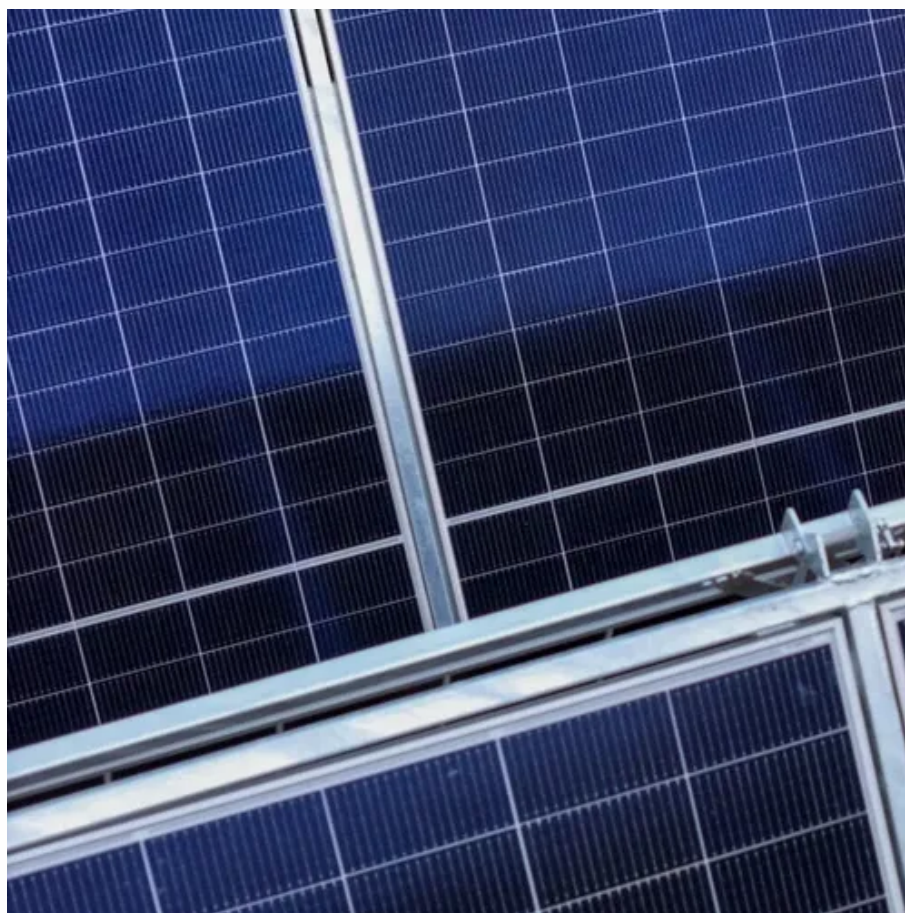




How many kilowatts does 42 solar panels produce





Overview

The short answer: most modern solar panels produce between 1. That typically works out to about 36–75 kWh per month per panel, depending on sunlight, orientation, and the efficiency of solar. Most common solar panel sizes include 100-watt, 300-watt, and 400-watt solar panels, for example. How Much Sun Do You Get (Peak Sun Hours). Obviously, the more sun you get, the more kWh a solar panel will produce. 1 kilowatt (kW) is equal to 1,000 watts, just as 1,000 watt-hours (Wh) equal 1 kilowatt-hour (kWh). Optimal solar panel placement is. Caution: Photovoltaic system performance predictions calculated by PVWatts ® include many inherent assumptions and uncertainties and do not reflect variations between PV technologies nor site-specific characteristics except as represented by PVWatts ® inputs. A 400-watt panel can generate roughly 1.5 kWh of energy per day, depending on local sunlight. System Size (kW) = (Monthly kWh × 12) / (365 × Sun Hours × (1 - Losses/100)) This formula has been verified by certified solar engineers and complies with industry standards.



How many kilowatts does 42 solar panels produce



PVWatts Calculator

Estimates the energy production and cost of energy of grid-connected photovoltaic (PV) energy systems throughout the world. It allows homeowners, small building owners, installers and manufacturers to ...

[How Much Energy Does a Solar Panel Produce: Output Explained](#)

The short answer: most modern solar panels produce between 1.2 and 2.5 kilowatt-hours (kWh) of energy per day per panel under real-world conditions. That typically works out to about ...



[How Much Energy Does A Solar Panel Produce?](#)

If you're thinking about going solar, one of your biggest questions is likely: how much electricity can a solar panel actually produce? This in-depth guide breaks down the numbers, the ...

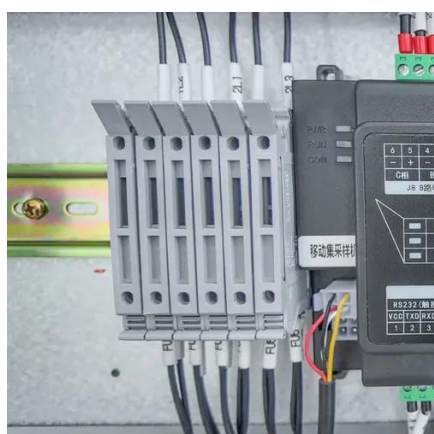
[Solar Panels kWh Calculator , Calculate Energy Production](#)

About 15-25 kWh annually per sq ft, depending on panel efficiency and location. Do solar panels produce kWh at night? No, solar panels require sunlight to produce electricity. Nighttime power must ...



[Solar Panel Output Calculator , Get Maximum Power Output](#)

Input your solar panel system's total size and the peak sun hours specific to your location, this calculator simplifies the complex process of estimating the energy your solar panels can ...



[How Much Power Does a Solar Panel Produce?](#)

As of 2020, the average U.S. household uses around 30 kWh of electricity per day or approximately 10,700 kWh per year. Most residential solar panels produce electricity with 15% to ...



[How Many kWh Does A Solar Panel Produce Per Day? Calculator](#)

To illustrate how many kWh different solar panel sizes produce per day, we have calculated the kWh output for locations that get 4, 5, or 6 peak sun hours. Here are all the results, gathered in a neat chart:



[How Many kWh Does a Solar Panel](#)



Produce?

The kWh a solar panel produces depends on two main factors: its wattage and sunlight intensity. Learn how to calculate a daily energy estimate.



How Much Energy Does a Solar Panel Produce in 2025?

In 2025, standard residential solar panels produce between 390-500 watts of power, with high-efficiency models reaching 500+ watts. However, the actual energy output depends on multiple ...

Solar Panel Calculator

Formula & Methodology System Size (kW) = (Monthly kWh × 12) / (365 × Sun Hours × (1 - Losses/100)) This formula has been verified by certified solar engineers and complies with industry standards.





Contact Us

For catalog requests, pricing, or partnerships, please visit:

<https://id2market.eu>

Phone: +34 910 56 87 45

Email: info@id2market.eu

Scan the QR code to access our WhatsApp.

