



# How many screws are needed for an energy storage box





## Overview

---

The standard size screws for electrical boxes are 6-32 screws. For electrical boxes that are deeper than 1-1/2 inches, you will need to use. The diameter of the screw should match the diameter of the mounting holes in the electrical box. Screw Length: The length of the screw should be sufficient to penetrate through the box and securely fasten it to. For cabinets and up to 4 screws for larger cabinets for added support. Is it necessary to use a stud finder when attaching cabinets to the wall?

Yes, it is important to use a stud finder. This household energy storage system can store 10 kWh of. These standard metal boxes have been secured by driving self-tapping screws through the 1/8-inch diameter mounting holes in the side of the box and into the horizontal metal stud. Only one mounting screw required at each end of bracket. every photo i see has two per side. Added language about warranties for clarity including specifying expectation that PV modules.



## How many screws are needed for an energy storage box



### Solar Electric System Requirements

2.3.16 Junction boxes and combiner boxes shall be listed and suitable for their environment and conditions of use. Boxes used in damp or wet locations shall have water-tight or properly flashed ...

### How to Install an Energy Storage Box: A Step-by-Step Guide for

But here's the kicker: this unassuming metal box could slash your electricity bills and keep Netflix running during blackouts. Whether you're pairing it with solar panels or just want backup power, this ...



### [How many screws required in a TSGB? : r/electricians](#)

Usually one on each side works fine, I go one on top on one side and one on the bottom on the other side. If it still has some play in it, then I will add another screw on each side to make two. Plus 2 to ...

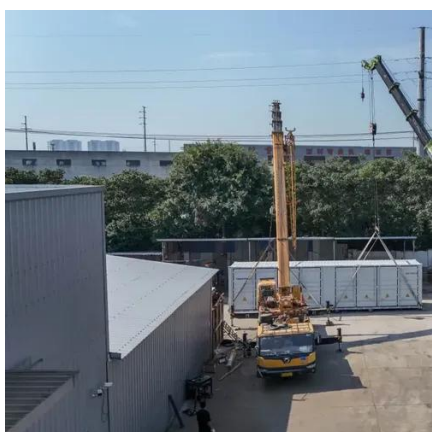
### [What Size Screws Do You Need for an Electrical Box?](#)

The size of screws you need for an electrical box will depend on the type of box and the thickness of the wall. For most standard electrical boxes, you will need 6 screws.



### [Solar PV Energy storage box installation and wiring method](#)

This manual addresses why these sorts of boxes are replacing remote power supply, what the components of the whole system are, how to wire and install it safely along with handy ...



### [Gridfinity , The modular, open-source grid storage system.](#)

These can be used to supplement the socket and secure blocks in baseplates more reliably. The magnets are 6mm diameter, 2mm thickness. Blocks should ideally have holes in all four corners of ...



### [How many screws are needed for an energy storage box](#)

This drywall screw calculator helps you estimate the number of screws needed for your drywall project. To use this calculator, you need to input the dimensions of the



## **How to Install an Energy Storage**



## System: Essential Guide for Optimal

In this comprehensive guide, we will walk you through how to install an energy storage system in detail, ensuring that you have the expertise needed to achieve exceptional performance and efficiency.



### ELECTRICAL TOOLS AND SCREWS USED TO CONNECT THE ...

stability of the cabinet. How many screws do I need to hang a cabinet? The number of screws energy to follow should there be any circuit malfunction or overload. By ensuring the excess current safely ...



### **314.23 (B) (1) Nails and Screws.**

These standard metal boxes have been secured by driving self-tapping screws through the 1/8-inch diameter mounting holes in the side of the box and into the horizontal metal stud.





## Contact Us

---

For catalog requests, pricing, or partnerships, please visit:

<https://id2market.eu>

Phone: +34 910 56 87 45

Email: [info@id2market.eu](mailto:info@id2market.eu)

Scan the QR code to access our WhatsApp.

