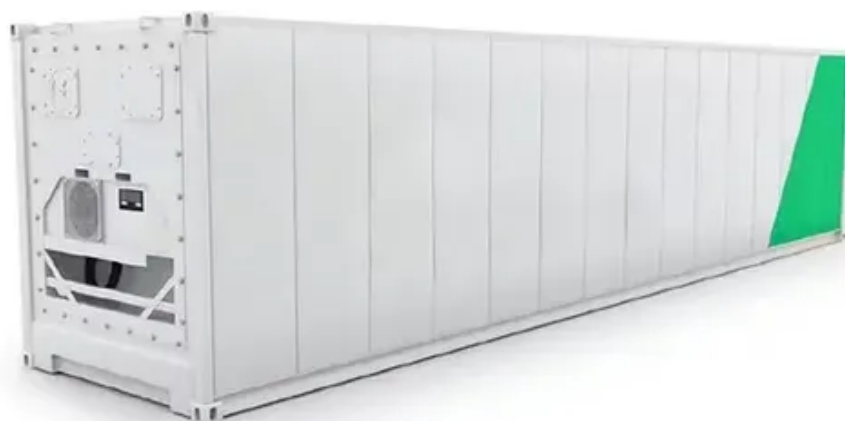




How many solar modules are connected in series with the inverter





How many solar modules are connected in series with the inverter



[PV String Design Explained: Series, Parallel & MPPT Matching](#)

Learn solar panel series and parallel connections of solar panels, PV string design, MPPT matching to keep your inverter efficient & solar system performing.

Can I run 2 panels in a series on one micro-inverter if the volts ...

It's not recommended as our current microinverters are designed to be connected to one panel. In Australia for example, the current standards state the max PV lead length from PV module to PCU ...



[Series, Parallel & Series-Parallel Connection of PV Panels](#)

What is a Solar Photovoltaic Array? A Solar Photovoltaic Module is available in a range of 3 WP to 300 WP. But many times, we need power in a range from kW to MW. To achieve such a large ...

[Solar Inverter String Design Calculations](#)

For many new to photovoltaic system design, determining the maximum number of modules per series string can seem straight forward, right? Simply divide the inverter's maximum ...



[The PV panel configuration way of the string inverter](#)

The string inverter is a key device used in solar power generation systems. It is responsible for converting the DC power generated by the solar panels into AC power, which can be ...



[How Many Solar Panels Can I Connect to an Inverter? A ...](#)

Learn how to optimize your solar power system by understanding how many solar panels can be connected to an inverter. Explore inverter specifications, wiring configurations, and the role of ...



How Many Solar Panels Can You Connect in Series? The Ultimate ...

The Ultimate Guide for Homeowners Why Your Inverter's Voltage Limit Holds the Answer Picture this - you're trying to power your entire house with solar energy, but your panels keep tripping the system ...

How many photovoltaic panels



should be connected in a string

The minimum string size, then, is 15 modules. The maximum string size is the maximum number of PV modules that can be connected in series and maintain a voltage below the maximum allowed input ...



Example of the Number of PV Modules Connected in Series

In distributed scenarios, configure and design PV modules based on the actual limits and specifications to ensure that the operating voltage of the PV string at the maximum power is within the full-load ...

Guide to Connect Solar Panels in Series - PowMr

Learn how to connect solar panels in series and calculate the maximum number of solar panels in a series string for safe, efficient performance.





Contact Us

For catalog requests, pricing, or partnerships, please visit:

<https://id2market.eu>

Phone: +34 910 56 87 45

Email: info@id2market.eu

Scan the QR code to access our WhatsApp.

