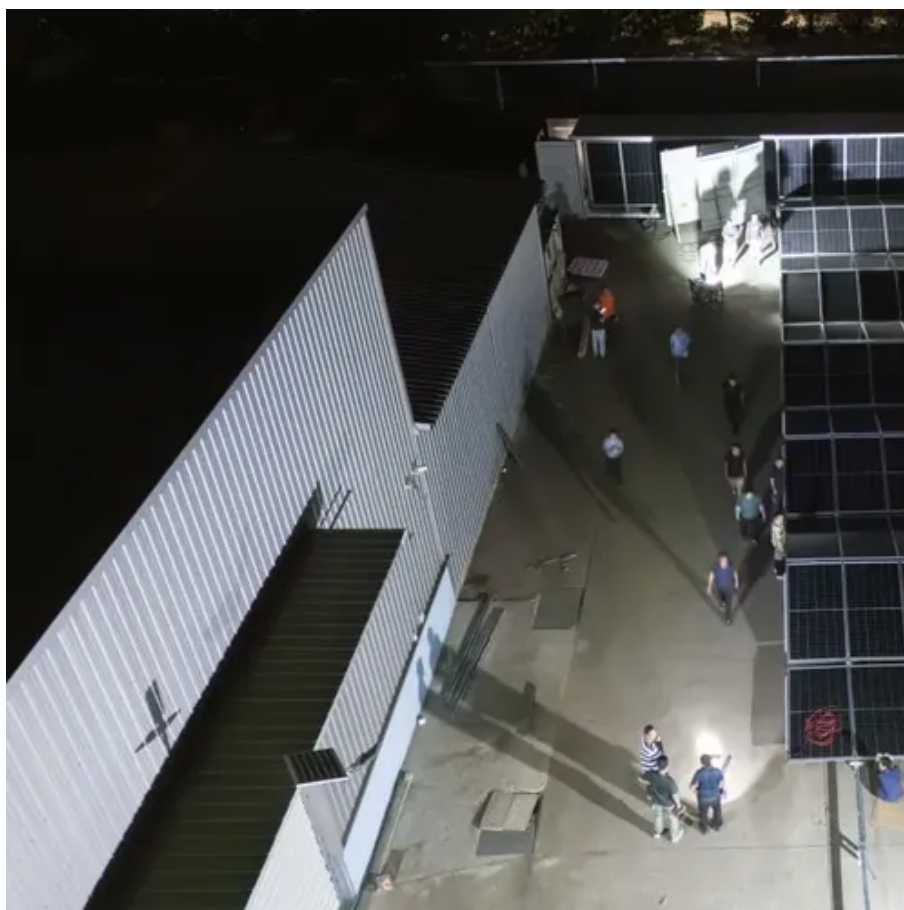




How many square meters are 660 photovoltaic panels





Overview

How many square meters of solar panels are required for 660W?

To determine the area required for solar panels delivering a total output of 660 watts, several factors must be considered. Typically, the answer lies in something most solar salespeople never properly explain— solar irradiance and your actual energy potential per square meter. But "ideal" rarely exists. Calculator for the power per area or area per power of a photovoltaic system and of solar modules. You can enter the size of the modules and click from top to bottom, or omit some steps and start e. At the bottom, it is calculated which size the photovoltaic system with the. Solar panels have become a cornerstone of renewable energy, but many wonder: How much power can a single square meter of solar panels actually produce?

Let's break down the science behind photovoltaic efficiency.



How many square meters are 660 photovoltaic panels



[Solar Power Per Square Meter Calculator](#)

Calculate solar panel energy output per square meter. Get accurate daily, monthly, and annual production estimates based on location, panel specs, and system losses.

[How Many Square Meters Are Photovoltaic Panels? A ...](#)

How Many Square Meters Are Photovoltaic Panels? A Comprehensive Guide The Real Estate of Solar Energy: Understanding Photovoltaic Panel Sizes Ever wondered how much roof space you'd need to ...



Photovoltaics

Calculator for the power per area or area per power of a photovoltaic system and of solar modules. You can enter the size of the modules and click from top to bottom, or omit some steps and start e.g. with ...



[Solar Power per Square Meter Calculator](#)

A solar power per square meter calculator takes details regarding these factors and then gives the accurate output generated by the solar panel per square meter.



Solar Calculator

Calculate how much power you need with these solar calculators to estimate the size and the cost of the solar panel array needed for your home energy usage.



[How many square meters are 660 photovoltaic panels](#)

How many square photovoltaic panels meters are 660 ters by 1,000 to convert it to square centimeters. Example: If a solar panel is 1.6 square meters, the calculation woul b 1. I output voltage for Points: ...



[How Many Square Meters Is One Solar Panel?](#)

This article will delve into the average size of a solar panel in square meters. We will explore the standard dimensions, the typical energy output associated with these sizes, and how ...



[How many square meters are the](#)



[photovoltaic panels of 660](#)

Use our solar panel calculator to find your solar power needs and what panel size would meet them.



Solar Panel Output Per Square Meter

Discover how much electricity solar panels generate per square meter, explore efficiency factors, technology comparisons, and future innovations in photovoltaic energy.

[How many square meters of solar panels 660w , NenPower](#)

Typically, the average solar panel size generates around 300 to 400 watts, which implies that at least two to three panels are needed to achieve 660W. Furthermore, the installation area can ...



[Solar Power per Square Meter Calculator](#)

This article will delve into the average size of a solar panel in square meters. We will explore the standard dimensions, the typical energy output associated with these sizes, and how ...



Contact Us

For catalog requests, pricing, or partnerships, please visit:

<https://id2market.eu>

Phone: +34 910 56 87 45

Email: info@id2market.eu

Scan the QR code to access our WhatsApp.

