



How many square meters are photovoltaic solar panels





Overview

The average solar panel size is approximately 1.6 square meters. This size can vary slightly based on the type and manufacturer of the panel. Solar panels have become a cornerstone of renewable energy, but many wonder: How much power can a single square meter of solar panels actually produce?

Let's break down the science behind photovoltaic efficiency. Under optimal conditions (5 peak sun hours): At noon under direct sunlight: *Note: 1m². Discover the average size of a solar panel in square meters and its implications for your energy needs and installation space. Power output ranges anywhere from 250W to 400W per panel, 3.



How many square meters are photovoltaic solar panels



[how to calculate square meters of photovoltaic cells](#)

The first step in calculating the square meters of photovoltaic cells is to determine the size of the solar panels that will be used. Solar panels come in standard sizes, typically around 1.6 square meters, ...

[How many square meters of solar panels does a family need?](#)

The efficiency of solar panels currently ranges from 150 to 200 watts peak per square meter (Wp/m^2). For our calculations, we will therefore use an average value of 175 Wp/m^2 . Note: This example ...



[Solar Power Per Square Meter Calculator](#)

Calculate solar panel energy output per square meter. Get accurate daily, monthly, and annual production estimates based on location, panel specs, and system losses.

[How Many Square Meters is a Solar Panel: Key Insights](#)

The average solar panel size is approximately 1.6 square meters (17.2 square feet). This measurement can vary slightly based on the manufacturer and the specific model of the panel. Most ...



[How Many Square Meters Are Photovoltaic Panels? A ...](#)

Ever wondered how much roof space you'd need to become your own power plant? Let's break down the spatial requirements of solar panels. A standard 320W photovoltaic panel measures about ...

Solar Panel Output Per Square Meter

Discover how much electricity solar panels generate per square meter, explore efficiency factors, technology comparisons, and future innovations in photovoltaic energy.



[How many square meters are photovoltaic solar panels?](#)

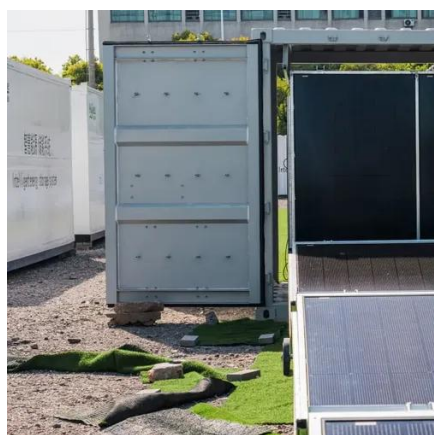
Typical size of solar panels is around 1.6 to 2 square meters, 2. Power output ranges anywhere from 250W to 400W per panel, 3. To determine the number of panels needed for a specific ...

[How Many Square Meters is One Solar](#)



[Panel?](#)

This article will delve into the average size of a solar panel in square meters. We will explore the standard dimensions, the typical energy output associated with these sizes, and how ...



[Solar Power per Square Meter Calculator](#)

Factors to Consider for Solar Panel Output Per Square Meter. Region: If you are living in countries near to poles, you will receive less sunlight. In comparison to the people living in regions ...

[Solar Panel Watts Per Square Meter Explained](#)

Compare solar panels to see which generates most electricity per square meter. A higher W/m value means a solar panel produces more power from a given area. This can help you determine how ...





Contact Us

For catalog requests, pricing, or partnerships, please visit:

<https://id2market.eu>

Phone: +34 910 56 87 45

Email: info@id2market.eu

Scan the QR code to access our WhatsApp.

