



How many strings are there of 48v solar container lithium battery pack in Hamburg Germany



- ✓ 100KWH/215KWH
- ✓ LIQUID/AIR COOLING
- ✓ IP54/IP55
- ✓ BATTERY 6000 CYCLES





Overview

Lithium battery pack 48V20AH generally single lithium battery is 3. A high-capacity pack might have several strings of 13 cells connected in parallel to boost ampere-hours without changing the overall 48V output. 7V, or 15-16 LiFePO4 cells with nominal voltages of 3. The correct number depends on battery chemistry and application requirements. Trusted OEM manufacturers like. How Many Cells Are in a 48V Battery?

Configurations, Capacity, and Types Explained A 48V battery typically has 16 cells.



How many strings are there of 48v solar container lithium battery pack

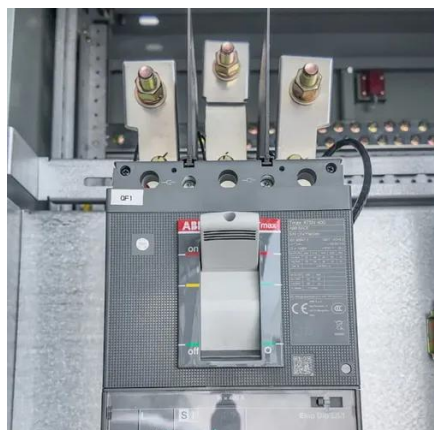


[How Many Cells in a 48V Lithium Battery?](#)

In conclusion, a typical 48V lithium battery consists of 13 cells connected in series, providing reliable power for various applications. Understanding this configuration is essential for ...

How many strings are there for a 48v8ah solar container lithium ...

The lithium ion battery pack 48V20AH is generally 3.5V single lithium ion battery, so the 48V lithium ion battery pack should be $48/3.5=13.7$, taking 14 in series.



[How many strings of 48v lithium battery pack](#)

For 48V battery packs, ternary lithium batteries generally use 13 strings or 14 strings, and lithium iron phosphate batteries generally use 15 strings or 16 strings.

48V 100Ah Lithium Battery for Solar: A Comprehensive Overview

For a 48V 100Ah lithium battery, the energy storage capacity is $48V \times 100Ah = 4800$ watt hours (Wh) or 4.8 kilowatt hours (kWh). This relatively large energy storage capacity makes it suitable for various ...



How Many Cells Are in a 48V Battery? Configurations, Capacity, and

In a 48V system, typically 13 lithium-ion cells are connected in series, as each cell provides approximately 3.7V when fully charged. This setup is common in electric vehicles and ...

How many strings are 48V20AH lithium battery packs? How to ...

Lithium battery pack 48V20AH generally single lithium battery is 3.5V, so 48V lithium battery pack needs $48/3.5=13.7$, just take 14 in series. If the manufacturer has provided a set of 12V ...



48V Battery Pack Guide Expert Design Capacity and Safety Features

In this guide, you'll get a clear, expert breakdown on how to design or select a 48V battery pack that balances performance, safety, and longevity--putting you in full control of your energy setup.

[How to Choose the Right Ah for 48V Li-ion](#)



Battery Pack?

A high-capacity pack might have several strings of 13 cells connected in parallel to boost ampere-hours without changing the overall 48V output. In short: More parallel groups = Higher Ah.



How Many Lithium Cells for 48V? Lithium Cells for 48V System

Choosing the right number of lithium cells for a 48V battery system depends largely on battery chemistry and performance requirements. Typically, 13 lithium-ion or 15-16 LiFePO4 cells in ...

How Many Lithium-Ion Cells Are Needed for a 48V Battery?

A typical 48V lithium battery contains 13 cells connected in series. Each cell provides around 3.7V, and the total voltage is achieved by multiplying this value by the cell count.



12.8V6Ah

- Nominal voltage (V):12.8
- Nominal capacity (Ah):6
- Rated energy (WH):76.8
- Maximum charging voltage (V):14.6
- Maximum charging current (A):6
- Floating charge voltage (V):13.6-13.8
- Maximum continuous discharge current (A):10
- Maximum peak discharge current @10 seconds (A):20
- Maximum load power (W):100
- Discharge cut-off voltage (V):10.8
- Charging temperature (°C):0-+50
- Discharge temperature (°C):-20-+60
- Working humidity: $\leq 95\%$ RH (non condensing)
- Number of cycles (25 °C, 0.5C, 100%DoD): >2000
- Cell combination mode: 32700-4s1p
- Terminal specification: T2 (6.3mm)
- Protection grade: IP65
- Overall dimension (mm):50*70*107mm
- Reference weight (kg):0.7
- Certification: un38.3/msds





Contact Us

For catalog requests, pricing, or partnerships, please visit:

<https://id2market.eu>

Phone: +34 910 56 87 45

Email: info@id2market.eu

Scan the QR code to access our WhatsApp.

