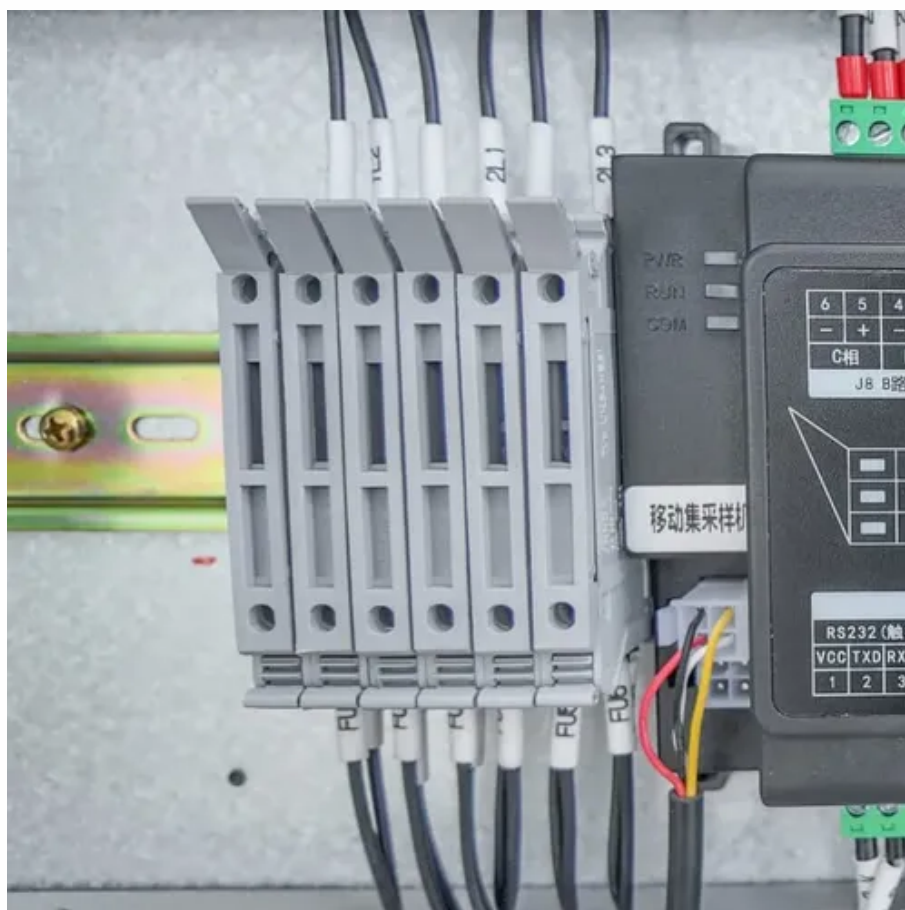




How many tons does each square meter of photovoltaic panels weigh





Overview

On average, solar panels weigh between 10 and 20 pounds per square meter. The weight doesn't spread evenly across the surface of your solar panel. This weight makes them manageable, but still requires careful lifting during installation. Among the most important factors that make solar panels so heavy: Residential solar panels usually have 60 cells and weigh about 40 pounds each. 16 meters wide have an area of 0.62 square feet and weigh around 40 pounds, excluding the weight of frames and mounting equipment.



How many tons does each square meter of photovoltaic panels weigh

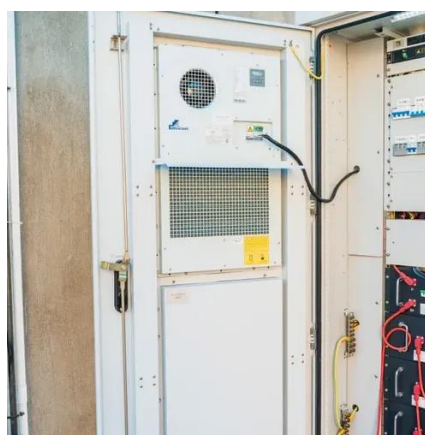


Solar Panel Weight , WGSJ

Knowing what we now know about the size and weight of solar panels, we can make a calculation of roughly how much a solar panel system is going to weigh, and whether or not your roof can support ...

How Much Do Solar Panels Weigh?

Solar cells - the part of the solar panel which generates electricity - are relatively light, weighing only a few hundred grams each. The majority of the weight of the panel actually comes from the aluminum ...



How Much Do Solar Panels Weigh?

Different manufacturers create solar panels of different weights. On average, solar panels weigh between 10 and 20 pounds per square meter. For a sound roof, this weight won't threaten the ...

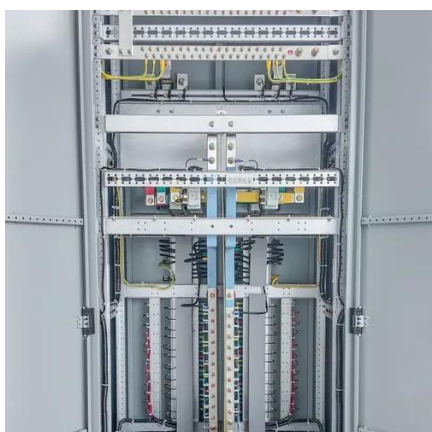
[average photovoltaic solar panel weight guide](#)

A complete solar array, including the panels and racking, typically adds an average load of 10 to 15 kilograms per square meter (2 to 3 pounds per square foot).



[Solar Panel Size And Weight: A Comprehensive Guide](#)

When considering residential solar panels, typical configurations consist of 60 cells measuring approximately 3.25 feet by 5.5 feet. These panels cover an area of 17.62 square feet and weigh



[Solar Panels Sizes and Weights \(All Sizes\)](#)

72-cell solar panels that are 28 kilograms and measure 2.03 meters long by 1.01 meters wide have an area of 2.05 square meters. Therefore, they weigh 13.66 kilograms per square meter.



[How Much Do Solar Panels Weigh? 1.30 - 2,608.7 lbs Chart](#)

When figuring out how much weight do solar panels add to a roof, that would be quite useful data to have. All individual solar panels weigh less than 100 lbs. However, solar systems with 8kW rated ...

How Much Does a Solar Panel Weigh?



Solar Panel Size, kg/sq.m., W/kg

In general, a solar panel consisting of 60 cells weighs between 18-24 kg (40-53 pounds) on average. Larger and more powerful solar panels can weigh much more. In this article, you will ...



Solar Panel Weight Guide

Learn the average weight stats for both home and business solar panels, as well as some FAQs about solar panels' weight.

How Much Do Solar Panels Weigh?

72-cell solar panels that are 28 kilograms and measure 2.03 meters long by 1.01 meters wide have an area of 2.05 square meters. ...



[Solar Panel Weight Guide - Solar Generation USA](#)

A typical residential solar installation with about 15-20 panels can weigh 300 to 450 kilograms (660 to 990 pounds) in total, which adds approximately 10 to 20 kilograms per square meter (2 to 4 pounds ...



Contact Us

For catalog requests, pricing, or partnerships, please visit:

<https://id2market.eu>

Phone: +34 910 56 87 45

Email: info@id2market.eu

Scan the QR code to access our WhatsApp.

