



How many volts does the inverter carry





Overview

Input voltage indicates the DC voltage required to operate the inverter. Inverters generally have an input voltage of 12V, 24V, or 48V. However, a battery of 12 volts can create up to 15 volts. As per the direct calculation, when the power of the inverter. The answer often lies in one critical factor: inverter output voltage. This comprehensive guide reveals voltage ranges for residential, commercial and industrial applications, complete with real-wo HOME / How Many Volts Does an Inverter Output?

Complete Voltage Guide 2024 How Many Volts Does an. Introduction - How does an inverter work?

Our batteries store power in DC (Current current) but most of our household appliances require AC (Alternating current) Our batteries come in different voltages (12,24, & 48v) But AC appliances required 120 volts (because our grid power comes in 120 volts).



How many volts does the inverter carry

FLEXIBLE SETTING OF MULTIPLE WORKING MODES



[Inverter Battery Voltage: How Many Volts Are Needed For ...](#)

An inverter battery typically operates at 12V, 24V, or 48V. These voltages represent the nominal direct current (DC) needed for the inverter's function.

[What Will An Inverter Run & For How Long? \(With Calculator\)](#)

Our batteries come in different voltages (12,24, & 48v) But AC appliances required 120 volts (because our grid power comes in 120 volts). So an inverter will convert the lower voltage of the battery into ...



How Many Volts Does an Inverter Use? A Complete Guide to ...

Confused about inverter voltage specifications? Discover how voltage impacts performance across solar systems, home backup solutions, and industrial applications.

[The Only Inverter Size Chart You'll Ever Need](#)

We have created a comprehensive inverter size chart to help you select the correct inverter to power your appliances.

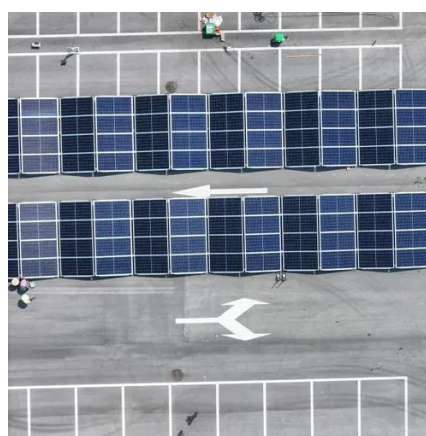


How Many Volts Does an Inverter Output? Complete Voltage Guide 2024

The answer often lies in one critical factor: inverter output voltage. This comprehensive guide reveals voltage ranges for residential, commercial and industrial applications, complete with real-world case studies and ...

What Size Inverter Do I Need?

This can be useful to find the right battery size for your inverter (which you can calculate using our handy guide) or for measuring the necessary volts. You can use the following formula to determine the size:



[How To Read And Interpret An Inverter Specification](#)

Inverters generally have an input voltage of 12V, 24V, or 48V. The inverter selected must match the power source, such as batteries or solar panels. Solar and EV systems usually use higher input voltages, such as ...



Frequently Asked Questions about Inverters

There is a simple method to calculate how much power your inverter is using: For 12-volt inverters, divide the connected load by 10; for 24-volt inverters, divide by 20.



How Many Amps Does a 100, 300, 500, 600, 750, 1000, 1500, 3000, ...

Usually, the voltage of a 300-watt inverter is within the range of 12 volts to 14 volts. If you do not know what the voltage of your inverter is, assume that it is 12.

How Many Voltages Does an Inverter Have? A Complete Guide to Voltage

Understanding inverter voltage specifications is critical for optimizing energy systems across industries. This guide explores common voltage ranges, their applications, and how to choose the right configuration for your ...





Contact Us

For catalog requests, pricing, or partnerships, please visit:

<https://id2market.eu>

Phone: +34 910 56 87 45

Email: info@id2market.eu

Scan the QR code to access our WhatsApp.

