



How many watts are the conventional specifications of photovoltaic panels





Overview

In general, conventional solar panels have a wattage output between 250 and 400 watts, with 300 watts being a common rating for many residential models. This variation depends on several factors, including technology, brand, and photovoltaic cell efficiency. Example: 5kW solar system is comprised of 50 100-watt solar panels. Alright, your roof square footage is 1000 sq ft. Can you put a 5kW solar system on your roof?

For that, you will need to know what size is a typical 100-watt solar panel, right?

To bridge that gap of very useful knowledge needed. Most residential solar panels in 2025 come in three main configurations: The most common choice for residential installations, 60-cell panels are arranged in a 6×10 grid. These panels typically produce between 350-450 watts and are ideal for most home installations due to their manageable size and. Using a solar panel size chart can help you choose the best types of solar panels for your home or application. Some panels can be as low as 370 watts. That is still enough for many homes. It's important to note that the rated wattage is measured in controlled.



How many watts are the conventional specifications of photovoltaic p



How many kilowatts are conventional solar panels , NenPower

In general, conventional solar panels have a wattage output between 250 and 400 watts, with 300 watts being a common rating for many residential models. This variation depends on ...

Solar Panel Wattage Calculation: How To Calculate In 2025?

Most residential panels in 2025 have a solar panel wattage rating between 350 and 480 watts, with installers offering panels ranging from 390 to 460 watts on average. Commercial installations often ...

- LiFePO₄ Battery,safety
- Wide temperature: -20-55°C
- Modular design, easy to expand
- The heating function is optional
- Intelligent BMS
- Cycle Life:>6000
- Warranty:10 years



Solar Panel Size and Wattage Chart: Standard Sizes & Uses for Each

The solar panel size chart can be a valuable tool in estimating the amount of standard-sized solar panels required for an average residential dwelling. At the present time that figure is ...

2025 Solar Panel Specs Guide: Choose the Best Panels

Typical panels range from 250W to 400W. Why It Matters: Pmax tells you how much electricity a panel generates. A 300W panel can produce 1.2-1.5 kWh daily (assuming 4-5 hours of sunlight), enough to ...



Understanding the Specifications of Solar Panels and How to Read ...

These conditions include a solar irradiance of 1,000 watts per square meter, solar cell temperature of 25°C, and 1.5 air mass. It's important to note that the rated wattage is measured in ...



Specific size specifications and models of photovoltaic panels

Is installation is important. What size solar panel do I Need? The most common solar panel sizes for residential installations are between 250W and 400W, while larger commercial installations may use ...



Deye inverters and Deye batteries are more compatible.



PV Panel Specifications: Understanding Solar Panel Technical ...

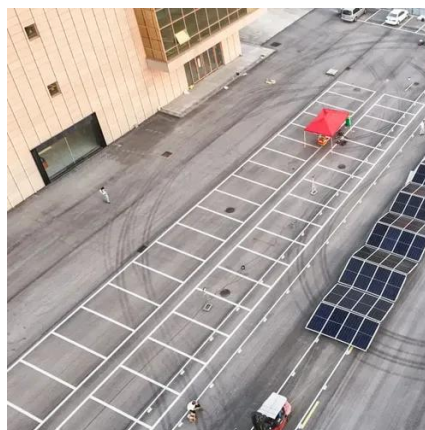
PV panel specifications give you facts to help you pick the right system. When you look at a solar panel specifications sheet, you find out how much power the panel can make. You also learn ...

Standard Solar Panel Sizes And



Wattages (100W-500W Dimensions)

The goal here is to get to the average solar panel size by wattage. You can find typical dimensions of 100W, 150W, 170W, 200W, 220W, 300W, 350W, 400W, and 500W solar panels summarized ...



Our Lifepo4 batteries can be connected in parallels and in series for larger capacity and voltage.



Understanding Solar Panel Sizes and Wattage: A Complete Tutorial

When considering solar panel sizes and wattage, you'll typically find options ranging from 250 to 400 watts. Opting for higher wattage units can be a game-changer, especially for those with ...

[Solar Panel Size & Dimensions Guide 2025](#) [. Complete Specs](#)

The most common residential solar panel measures approximately 65" x 39" x 1.5" (5.4 feet by 3.25 feet) and produces 350-450 watts. This is known as a 60-cell panel configuration.





Contact Us

For catalog requests, pricing, or partnerships, please visit:

<https://id2market.eu>

Phone: +34 910 56 87 45

Email: info@id2market.eu

Scan the QR code to access our WhatsApp.

