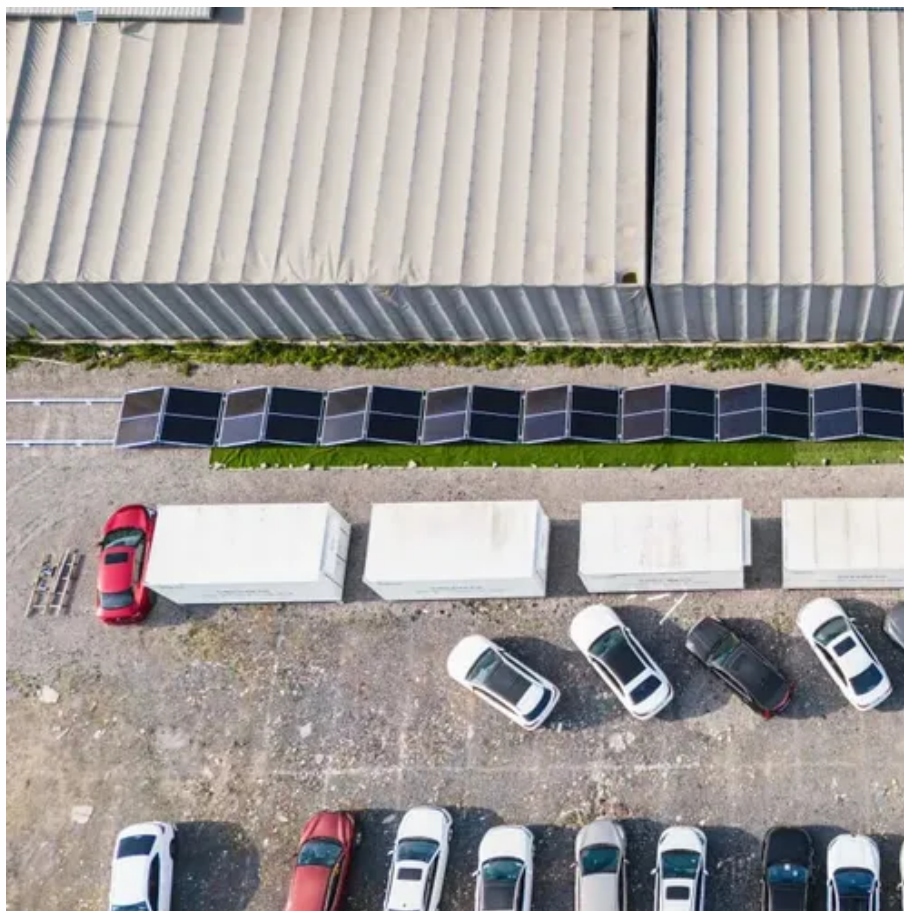




How many watts are the photovoltaic panels of 540





Overview

A 540 watt solar panel is designed to convert sunlight into electricity, with a maximum output of 540 watts under ideal conditions. This rating indicates the panel's efficiency and capacity to generate power. However, the actual power produced can vary based on several factors. But how much power does a 540 watt solar panel actually produce, and why does this matter?

This article aims to provide clarity on this topic, helping homeowners, businesses, and energy enthusiasts. Example: 5kW solar system is comprised of 50 100-watt solar panels. Alright, your roof square footage is 1000 sq ft. Can you put a 5kW solar system on your roof?

For that, you will need to know what size is a typical 100-watt solar panel, right?

To bridge that gap of very useful knowledge needed. The fundamental formula for calculating solar panel wattage is: $Wattage = Voltage \times Current$ When applied to solar panels, this can be expressed as: $Solar\ Panel\ Wattage = V_{mp} \times I_{mp}$ Where: V_{mp} represents the voltage at maximum power point, indicating the optimal voltage level at which the panel. Estimate daily, monthly, and yearly solar energy output (kWh) based on panel wattage, quantity, sunlight hours, and efficiency factors.



How many watts are the photovoltaic panels of 540



[Exploring How Much Power a 540 Watt Solar Panel Produces](#)

A 540 watt solar panel is designed to convert sunlight into electricity, with a maximum output of 540 watts under ideal conditions. This rating indicates the panel's efficiency and capacity to ...

[Solar Panel Sizes and Wattage Explained](#)

Over 179 (GW) of solar capacity is installed nationwide and it's capable of powering roughly 33 million homes. While it takes roughly 17 (400-watt) panels to power a home.



Standard Solar Panel Sizes And Wattages (100W-500W Dimensions)

To bridge that gap of very useful knowledge needed, we have compared and averaged the sizes of 100-watt to 500-watt solar panels available on the market. The goal here is to get to the average solar ...

Solar Panel (Power) Calculator

Solar Panel Calculator is an online tool used in electrical engineering to estimate the total power output, solar system output voltage and current when the number of solar panel units connected in series or ...



Solar Panel Wattage Calculator

This calculator considers variables such as panel efficiency, sunlight intensity, and environmental conditions, allowing for a more accurate prediction of the electricity a solar panel can generate.



[Solar Panel Output Calculator by Wattage](#) [SolarMathLab](#)

Free online solar panel output calculator -- estimate daily, monthly, and yearly kWh energy production based on panel wattage, number of panels, sun hours, and system efficiency.



Solar Panel Wattage Calculator

This solar panel wattage calculator allows you to calculate the recommended solar panel wattage according to the energy consumption of your household appliances.



540 Watt Solar Panels

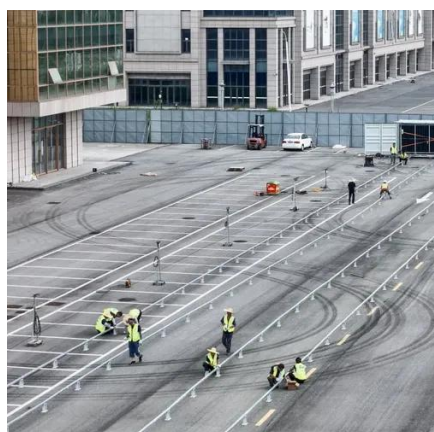


A good illustration of this pattern are 540 watt solar panels. They have one of the largest power outputs in the industry -- almost twice the typical. These panels are ideal for large-scale ...



[Bluebird 540 Watt Half Cut Solar Panels](#)

A 540W Half-Cut Solar Panel refers to a photovoltaic panel that has a power output of 540 watts and employs a "half-cut" cell design. In a half-cut design, the solar cells on the panel are divided into two ...



540W Solar Panels: Specifications, Efficiency, and Cost-Benefit

540W Solar Panels deliver high efficiency, durability, and cost savings for large installations, making them ideal for industrial and commercial energy needs





Contact Us

For catalog requests, pricing, or partnerships, please visit:

<https://id2market.eu>

Phone: +34 910 56 87 45

Email: info@id2market.eu

Scan the QR code to access our WhatsApp.

