



How many watts does a 12v inverter have





How many watts does a 12v inverter have



[Power Inverter Calculator , Watt Calculator , Go Power!](#)

Which power inverter is right for you? By answering these simple questions, we can recommend a product for you in just a few moments. This calculator helps us identify how much power your AC ...

[How much power does an inverter draw? - Help Centre](#)

A quick rule is to divide watts by 10 for 12V systems or 20 for 24V systems. For more accuracy, divide the load by the actual battery voltage and adjust for inverter efficiency (typically 85%). This ensures ...

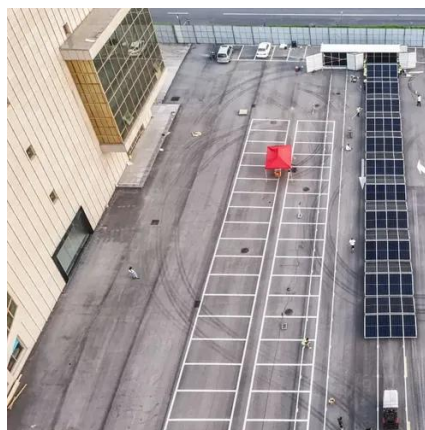


[How Much Power an Inverter Draws with No Load](#)

This is known as a no load current although the energy drawn is only 2 to 10 watts n hour. The no load current is listed on the inverter specifications sheet. It will be either no load current draw (amps) or no ...

[What size inverter can you run off a car battery?](#)

Standard 12V car batteries safely support inverters up to around 600 watts for general use. Battery capacity (Ah), inverter efficiency, and load determine practical inverter size and runtime.

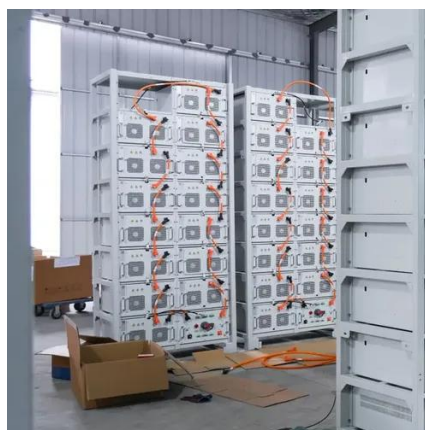


[What Inverter Works With My Car Cigarette Lighter/12V Outlet](#)

As you can see the largest inverter for a 12 volt outlet in a normal vehicle is 240 watts. Anything larger will risk blowing the fuse or even damaging the wiring. So which inverter is right for ...

[The Only Inverter Size Chart You'll Ever Need](#)

During our research, we discovered that most inverters range in size from 300 watts up to over 3000 watts. In this article, we guide you through the different inverter sizes.



How Many Watts Does an Inverter Usually Have? A Practical Guide ...

How Many Watts Does an Inverter Usually Have? A Practical Guide for 2024 Summary: Inverters typically range from 150W to 15,000W depending on their application.

[Frequently Asked Questions about](#)



Inverters

There is a simple method to calculate how much power your inverter is using: For 12-volt inverters, divide the connected load by 10; for 24-volt inverters, divide by 20.



What Size Inverter Do I Need?

For this example, you will need a power inverter capable of handling 4500 watts. The continuous power requirement is actually 2250 but when sizing an inverter, you have to plan for the start up so the ...

Power Inverter Buying Guide 2025 , How to Choose

Modern power inverters come in various sizes and configurations, from compact 1000W inverters for laptops and small devices to powerful 3000W inverters and larger units capable of running entire ...





Contact Us

For catalog requests, pricing, or partnerships, please visit:

<https://id2market.eu>

Phone: +34 910 56 87 45

Email: info@id2market.eu

Scan the QR code to access our WhatsApp.

