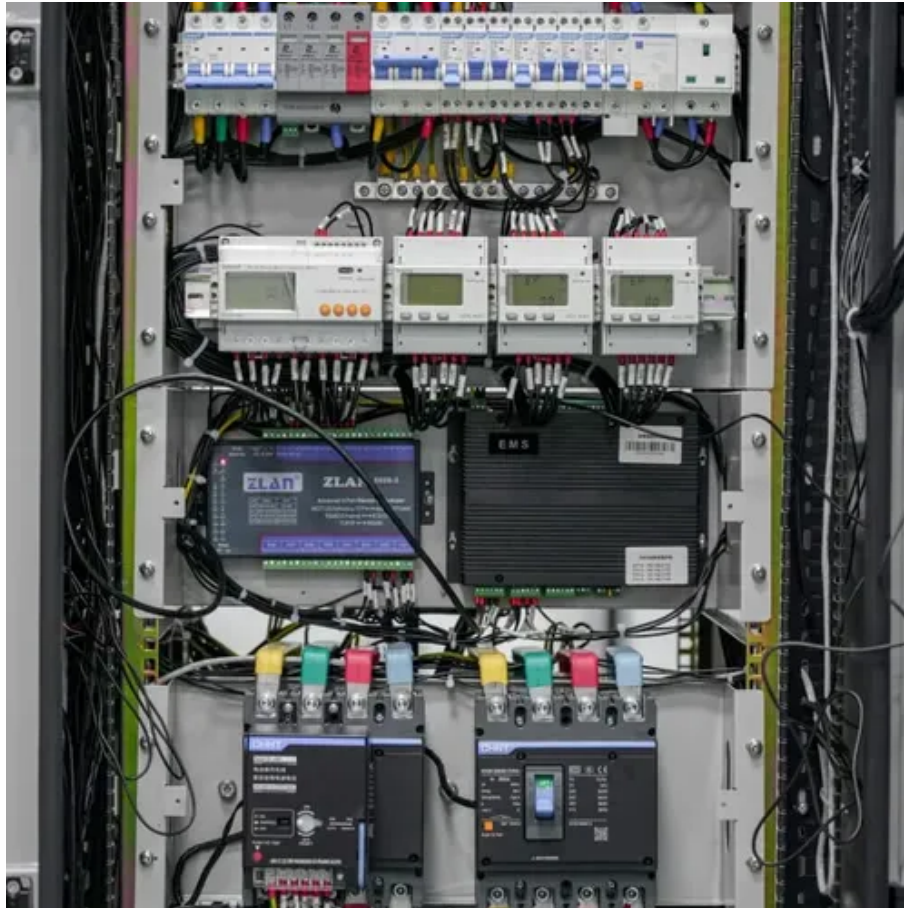




How many watts does a 275 watt photovoltaic panel have





Overview

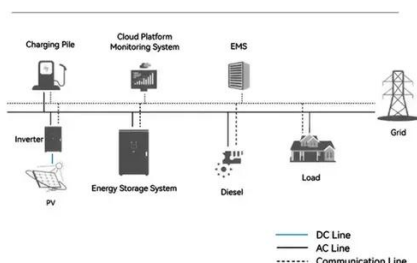
Basic panels output between 250 and 300 watts, mid-range panels produce 300 to 350 watts, and top-quality, high-efficiency panels can generate 350 to 450 watts or more. Most homeowners find the 300 to 400-watt range to be the best choice because it offers a good balance of price. Calculating the solar panel wattage you need for your household is very easy. It starts off with the following equation:

Where: electricity consumption (kWh/yr) - Total average amount of electricity you use annually. Found on your utility bill, and solar hours per day - Average hours of direct. The fundamental formula for calculating solar panel wattage is: $\text{Wattage} = \text{Voltage} \times \text{Current}$ When applied to solar panels, this can be expressed as: $\text{Solar Panel Wattage} = V_{mp} \times I_{mp}$ Where: V_{mp} represents the voltage at maximum power point, indicating the optimal voltage level at which the panel. Example: 5kW solar system is comprised of 50 100-watt solar panels. Alright, your roof square footage is 1000 sq ft. Losses come from inverter efficiency, wiring, temperature, and dirt. In real life, output can be a bit lower. Think of it like a car's fuel rating it shows potential, not.



How many watts does a 275 watt photovoltaic panel have

System Topology



Solar Panel Watts Calculator

Definition: This calculator determines the power output of a solar panel based on its voltage and current. Purpose: It helps solar energy professionals and DIYers calculate the wattage of solar panels for ...

Solar Panel Wattage Calculator

Our Solar Panel Wattage Calculator makes the process quick, clear, and stress-free. You'll know how many panels you need, how much space they take, and what to expect in return.



[How Much Energy Does A Solar Panel Produce? , EnergySage](#)

We looked through thousands of quotes on the EnergySage Marketplace and found that VSUN offers the solar panel with the highest output for homes: 490 watts and 22.65% efficiency.

Solar Panel Wattage Calculator

This solar panel wattage calculator allows you to calculate the recommended solar panel wattage according to the energy consumption of your household appliances.



Solar Panel Wattage Calculator

This calculator considers variables such as panel efficiency, sunlight intensity, and environmental conditions, allowing for a more accurate prediction of the electricity a solar panel can generate.



[Solar Panel Wattage Calculation: How To Calculate In 2025?](#)

Most residential panels in 2025 have a solar panel wattage rating between 350 and 480 watts, with installers offering panels ranging from 390 to 460 watts on average. Commercial installations often

...



Standard Solar Panel Sizes And Wattages (100W-500W Dimensions)

To bridge that gap of very useful knowledge needed, we have compared and averaged the sizes of 100-watt to 500-watt solar panels available on the market. The goal here is to get to the average solar ...

[Solar Panel Output Calculator by Wattage](#)



[SolarMathLab](#)

Free online solar panel output calculator -- estimate daily, monthly, and yearly kWh energy production based on panel wattage, number of panels, sun hours, and system efficiency.



[Solar Panel Sizes and Wattage Explained](#)

Moreover, solar panel size per kW and watt calculations are estimates that may vary depending on panel efficiency, shading, and orientation. For specific sizing and installation ...

[Solar Panel Power: How Many Watts Does One Panel Produce?](#)

Monocrystalline silicon panels typically produce the highest wattage per panel, ranging from 350 to 450 watts for residential applications. These panels use single-crystal silicon cells that convert sunlight to ...





Contact Us

For catalog requests, pricing, or partnerships, please visit:

<https://id2market.eu>

Phone: +34 910 56 87 45

Email: info@id2market.eu

Scan the QR code to access our WhatsApp.

