



How many watts does a photovoltaic panel have per square meter





How many watts does a photovoltaic panel have per square meter

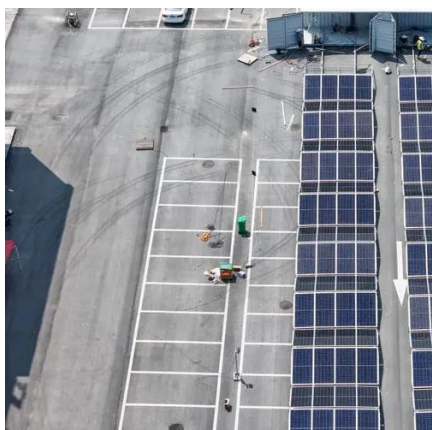


[Solar Power Per Square Meter Calculator](#)

Solar Power Per Square Meter Calculator: Ultimate Guide to Maximizing Your Solar Energy Output
Calculate solar panel energy output per square meter. Get accurate daily, monthly, and annual ...

Solar Panel Output Per Square Meter

Discover how much electricity solar panels generate per square meter, explore efficiency factors, technology comparisons, and future innovations in photovoltaic energy.



[How many watts of photovoltaic panels per square meter](#)

Standardized residential solar panels on the market are quoted to generate averagely between 250 and 400 watts an hour. Typical domestic solar panel systems are rated to produce ...

[Solar Panel Watts Per Square Meter Explained](#)

Learn how to measure solar panel efficiency using solar panel watts per square meter with this comprehensive guide.



Solar

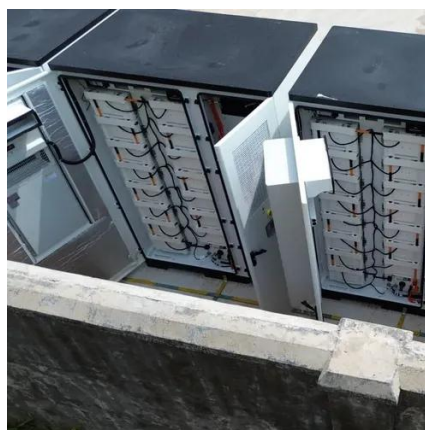


[Solar Panel Wattage Calculation: How To Calculate In 2025?](#)

Solar Panel Wattage Calculations: The Complete Guide to Power Output and Efficiency Optimization for Professional Installers Understanding solar panel wattage calculation has become mission-critical for ...

[How many watts does a solar panel have per square meter?](#)

1. Solar panels typically generate between 100 to 200 watts per square meter, depending on efficiency and technology used. 2. Factors such as sunlight exposure,...



[How to Understand Solar Panel Watts Per Square Meter](#)

Different panel types, such as monocrystalline, polycrystalline, thin-film, and high-efficiency panels, have varying typical watts per meter square outputs. Maximizing watts per square ...



How many watts of solar



photovoltaic power generation per square meter

The examination of solar photovoltaic power generation underscores its profound significance in contemporary energy discourse. The ability of solar panels to generate electricity per ...



1 square meter solar photovoltaic panel

The average solar panel has an input rate of roughly 1000 Watts per square meter, while the majority of solar panels on the market have an input rate of around 15-20 percent.

How many watts are there in 1 square meter of photovoltaic panels

The average power output of photovoltaic panels is around 1,000 watts per square meter¹. However, the actual output can vary based on factors such as panel type and conditions. Monocrystalline panels, ...





Contact Us

For catalog requests, pricing, or partnerships, please visit:

<https://id2market.eu>

Phone: +34 910 56 87 45

Email: info@id2market.eu

Scan the QR code to access our WhatsApp.

