



How many watts of solar energy per square meter





How many watts of solar energy per square meter



[Solar Power Per Square Meter Calculator](#)

A typical solar panel produces 150-250 watts per square meter under standard test conditions (1,000 W/m² irradiance, 25°C). In real-world conditions, expect 120-200W/m² during peak sun hours.

Watts Per Square Meter Solar Panel

Watts per square meter (W/m²) is the power density of sunlight falling on a given area of solar panels. In the context of solar panels, it refers to the amount of electrical power a solar panel ...



- LiFePO₄ Battery, safety
- Wide temperature: -20-55°C
- Modular design, easy to expand
- The heating function is optional
- Intelligent BMS
- Cycle Life: ≥ 6000
- Warranty: 10 years



[Solar Power per Square Meter Calculator](#)

As per the recent measurements done by NASA, the average intensity of solar energy that reaches the top atmosphere is about 1,360 watts per square meter. You can calculate the solar ...

[How many watts per square meter is the top solar energy?](#)

The theoretical limit for solar power conversion efficiency indicates that up to 1000 watts can be captured for every square meter of solar panel area under standard testing conditions, ...



Solar Panel Output Per Square Meter

Discover how much electricity solar panels generate per square meter, explore efficiency factors, technology comparisons, and future innovations in photovoltaic energy.

[Solar Energy Generation Per Square Metre: A Complete Guide](#)

On a clear day, each square metre of the Earth's surface receives approximately 1,000 watts of solar energy, also known as 1 kW/m². This energy can be converted into electricity using ...



[Solar Power per Square Meter Calculator](#)

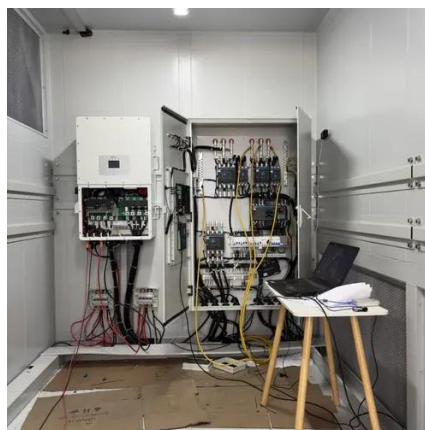
This article explores solar energy per square meter and the various factors that influence energy output, such as location, ...

[Solar Panel Watts Per Square Meter](#)



[Explained](#)

Learn how to measure solar panel efficiency using solar panel watts per square meter with this comprehensive guide.



Watts Per Meter Squared: Your Ultimate US Solar Irradiance Guide

This guide breaks down watts per meter squared, a crucial measurement for solar panel efficiency. We explore how factors like atmospheric conditions impact irradiance.

Solar Panels Watts per Square Meter

So, when we say "watts per square meter," we are essentially measuring how much power a solar panel can produce relative to its physical size. This metric, watts per square meter, ...



[Solar Energy Per Square Meter: How Much Power Can You Get?](#)

This article explores solar energy per square meter and the various factors that influence energy output, such as location, climate, and panel efficiency. It provides crucial calculations, ...





Contact Us

For catalog requests, pricing, or partnerships, please visit:

<https://id2market.eu>

Phone: +34 910 56 87 45

Email: info@id2market.eu

Scan the QR code to access our WhatsApp.

