



How many °C is the discharge of energy storage lithium battery





Overview

Most Lithium-Ion (Li-Ion) cells must not be charged above 45°C or discharged above 60°C. These limits can be pushed a bit higher, but at the expense of cycle life. In the worst case, if cell temperatures get too high, venting may occur, resulting in battery failure or even a cell. · Example: a cell rated at 100% capacity at 27 °C might deliver only ~50% at -18 °C. Prolonged exposure to high temperature can permanently reduce cycle life: · At 30 °C: cycle life reduced by ~20% · At 40 °C: cycle life reduced by ~40% · At 45 °C+: lifespan can be cut nearly in half Capacity loss. Battery storage is a technology that enables power system operators and utilities to store energy for later use. A battery energy storage system (BESS) is an electrochemical device that charges (or collects energy) from the grid or a power plant and then discharges that energy at a later time to. Lithium-ion batteries operate and store energy within specific thermal thresholds. At this storage temperature range, the battery will require a maintenance charge within a nine (9) to twelve (12) month period. As the. Self-discharge is energy lost to side reactions and tiny parasitic loads while the pack sits idle. The battery management system (BMS) also.



How many °C is the discharge of energy storage lithium battery



Storage Temperature & Self-Discharge

You will learn how storage temperature affects self-discharge rate, how to set safe ranges, and how to troubleshoot unexpected drain. The practices here align with research from ...

Lithium-Ion Battery Discharge Rules: How to Maximize Performance

For long-duration use (e.g., overnight grid storage), use low discharge rates (0.1C-0.5C) to maximize energy output. For short bursts (e.g., EV acceleration), high discharge rates are ...

LPR Series 19' Rack Mounted



What's the Optimal Lithium Battery Storage Temperature? Balancing

Storage Temperature: For long-term storage, the ideal lithium ion battery storage temperature is 10°C to 25°C (50°F to 77°F). Temperatures above 30°C (86°F) increase self-discharge and capacity loss, ...

Temperature effect and thermal impact in lithium-ion batteries: A

Lithium-ion batteries, with high energy density (up to 705 Wh/L) and power density (up to 10,000 W/L), exhibit high capacity and great working performance. As rechargeable batteries, lithium ...

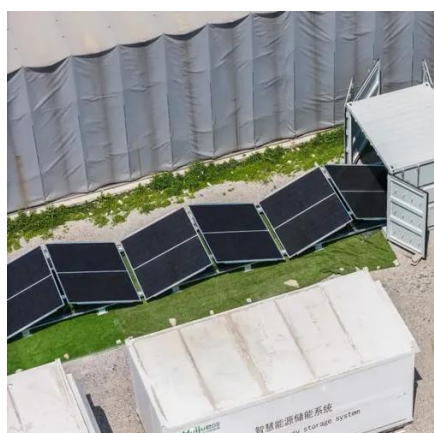
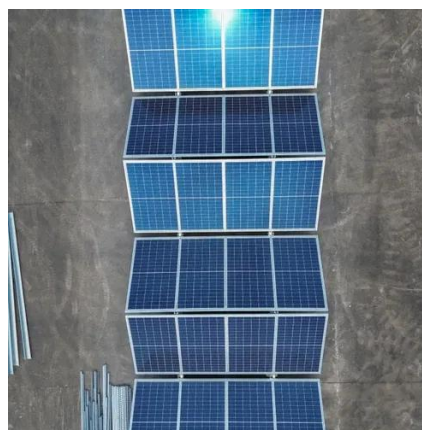


Li-ion Battery Temperature Trends During Charge and Discharge

Most Lithium-Ion (Li-Ion) cells must not be charged above 45°C or discharged above 60°C. These limits can be pushed a bit higher, but at the expense of cycle life. In the worst case, if cell temperatures get ...

Grid-Scale Battery Storage: Frequently Asked Questions

Storage duration is the amount of time storage can discharge at its power capacity before depleting its energy capacity. For example, a battery with 1 MW of power capacity and 4 MWh of usable energy ...



Lithium Battery Temperature Range: A Complete Guide Operating, ...

From an application perspective, the lithium battery temperature range is typically divided into three categories: Normal range: -20°C to 60°C, within which the battery can charge and ...

LITHIUM ION BATTERY STORAGE &



MAINTENANCE CHARGING

perature range is 0°C to 30°C (32°F to 86°F). At this storage temperature range, the battery will require a maintenance charge within a nine (9) to twelve (12) month period. A detailed maintenance charge ...



Lithium-Ion Battery Discharging at High and Low ...

Learn how high and low temperatures affect lithium-ion battery discharge. Discover capacity changes, voltage sag, lifespan impact.

Thermal Behaviour of the Li-Ion Cell

Most battery management systems (BMS) enforce a maximum operating temperature range, typically 60-80 °C, to prevent thermal failure. A practical rule is that after a complete ...





Contact Us

For catalog requests, pricing, or partnerships, please visit:

<https://id2market.eu>

Phone: +34 910 56 87 45

Email: info@id2market.eu

Scan the QR code to access our WhatsApp.

