



How much does a large mobile outdoor storage unit for a farm cost





Overview

The average pole barn costs anywhere from \$7,000 to \$75,000, but large or complex pole barns can cost up to \$100,000. Costs also vary by area due to regional material prices and local design requirements, and you'll have to factor in optional items you want to add to your. Improper equipment storage costs thousands in damage and creates deadly hazards - proper shed design prevents \$10,000+ equipment losses! Size mistakes are catastrophic: too-small doors force angled entry damaging \$30,000 tractors, inadequate height crushes ROPS/canopies voiding warranties, and. The article discusses metal buildings ideal for storing farm equipment, focusing on protection and accessibility. It highlights considerations such as size, ventilation, and durability. Farm sheds must withstand harsh weather and pests. Low. Find a large selection of Sheds, Garages & Outdoor Storage items for all your projects at low Fleet Farm prices. Should you have any inquiries about any of our exceptional portable structures, please do not hesitate to get in touch with us.



How much does a large mobile outdoor storage unit for a farm cost



[X-Large Utility Buildings, Barns & Storage Garages](#)

Choose from a huge line up of extra large buildings in vinyl, resin, wood, plastic and metal options. Buy a cost effective metal storage building from Arrow Sheds or choose from our premium vinyl DuraMax ...

Sheds, Garages & Outdoor Storage

Find a large selection of Sheds, Garages & Outdoor Storage items for all your projects at low Fleet Farm prices.



Farm Storage Buildings , Ag Machine & Equipment Storage Sheds

In order to help determine how much farm equipment storage is needed to meet your current and future needs, we've created a " Farm Shop Design Series " to guide you through this question and many ...

[A Guide to Farm Equipment Storage Sheds , SteelCo Buildings](#)

The cost of constructing a farm equipment storage shed can range significantly, with large sheds (around 2,000 SF) starting at \$34,000 and going up to \$40,000 or more.



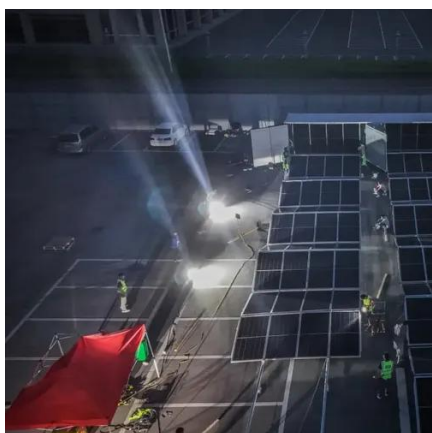
Equipment Storage-Portable Storage Buildings, Shelters, Garage Kits

Our portable storage buildings and sheds are the solution. Meeting your storage needs from the start, we present a wide range of portable buildings, from as small as six feet wide for lawnmowers to 40 ...



Farm Storage Buildings

Large farm storage building prices start at roughly \$36,000 and typically go up to \$88,000, but some kits may cost more if you're looking for something extra large.



Farm Storage Buildings

What Is A Farm Storage Pole Barn?How Much Does It Cost to Build A Farm Storage Building?What Does A Farm Storage Building Look Like on The Inside?How Does A Wooden Farm Storage Pole Barn Differ from Steel-Frame Buildings?Farm Storage Pole Barn Advantages and DisadvantagesHow Long Does A Farm Storage Building Take to Put Together?Where Do I Get A Farm Storage Building Kit?How Do I Find A Farm Storage Building Contractor Near Me?The size of your new farm storage building will determine its price. The average pole barn costs anywhere from



\$7,000 to \$75,000, but large or complex pole barns can cost up to \$100,000. Costs also vary by area due to regional material prices and local design requirements, and you'll have to factor in optional items you want to add to your building. See more on [hansenpolebuildings fleetfarm](#)

Sheds, Garages & Outdoor Storage - Fleet Farm

Find a large selection of Sheds, Garages & Outdoor Storage items for all your projects at low Fleet Farm prices.

[Portable Sheds & Buildings for Sale . Countryside Barns](#)

Discover your very own portable storage building or shed, and take the opportunity to compare prices and gather some inspiring ideas. Should you have any inquiries about any of our exceptional ...



Equipment Shed Cost Guide

Explore our Equipment Shed Cost Guide to find the perfect storage solution for your tractor, mower, and machinery needs.

Portable Storage Container Prices

16 Ft. Portable Storage Units - you should expect to pay around \$175 - \$205 per month. If you are looking for a steel shipping container for storage on a construction site, farm, or outdoors, then a ...





Farm Equipment Storage Buildings, Metal Storage Buildings

No matter how big or small your agricultural equipment is, there's an AgriBilt® farm storage building for you. From tractors and plows to combines and sprayers, find the right arch building size for your ...



Contact Us

For catalog requests, pricing, or partnerships, please visit:

<https://id2market.eu>

Phone: +34 910 56 87 45

Email: info@id2market.eu

Scan the QR code to access our WhatsApp.

