



How much electricity does a base station require



All in one
50-500 Kwh
Hybird System





How much electricity does a base station require



[How Much Electricity Does A Data Center Use? 2025 Guide](#)

Data centers consume 176 TWh annually in the US (4.4% of electricity). Learn consumption by size, AI impact, and future projections in our comprehensive 2025 guide.

How Much Electricity Does a Data Center Use? Complete 2025 Analysis

How much electricity does a typical data center use compared to homes? A single large hyperscale data center can consume 20-100+ MW of power continuously, equivalent to powering ...



Data Centers and Their Energy Consumption: Frequently Asked ...

Some projections show that data center energy consumption could double or triple by 2028, accounting for up to 12% of U.S. electricity use. Roughly one-half or greater of the electric ...

Base Station Energy Efficiency: Key Strategies for Sustainable ...

However, running a base station requires a constant supply of electricity to power antennas, signal processing units, cooling systems, and supporting infrastructure. Globally, the ...



Energy Consumption of 5G, Wireless Systems and the Digital Ecosystem

"A 5G base station is generally expected to consume roughly three times as much power as a 4G base station. And more 5G base stations are needed to cover the same area," -IEEE Spectrum, 5G's ...

How much power does a cell tower consume?

To provide output on Antenna, you have a MacroNodeB at the base station which communicates to your mobile via the Antenna. This is rated at 150W. It would need another 50W to ...



Energy Consumption of 5G, Wireless Systems and the Digital ...

Ericsson has been able to innovate a 5G base station that consumes only 20% energy when the traffic is low compared to a normal setup. This achieves through advanced ...



What is the Power Consumption of a 5G



Base Station?

Ericsson has been able to innovate a 5G base station that consumes only 20% energy when the traffic is low compared to a normal setup. This achieves through advanced software ...

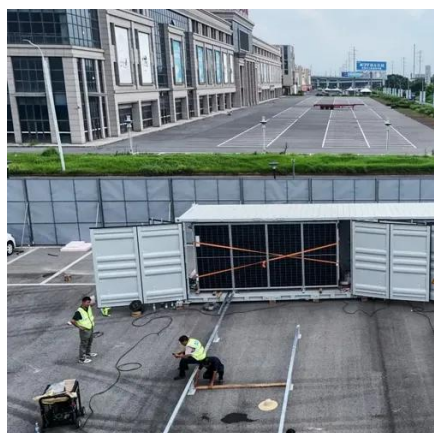


Why does 5g base station consume so much power and how to ...

In addition to other small modules that use electricity, the power consumption of a single 5G base station is generally around 3700 watts, which is about three times that of 4G and does not ...

How much power does a cell tower consume?

To provide output on Antenna, you have a MacroNodeB at ...



How much power does 5G consume?

One 5G base station is estimated to consume about as much power as 73 households (6), and 3x as much as the previous generation of base stations (5), (7). When base stations, data centers and ...

Key Factors Affecting Power



Consumption in Telecom Base Stations

In order to ensure the normal operation of the network, the operator must plan the coverage area of the base station in advance and calculate the power that needs to be transmitted, ...





Contact Us

For catalog requests, pricing, or partnerships, please visit:

<https://id2market.eu>

Phone: +34 910 56 87 45

Email: info@id2market.eu

Scan the QR code to access our WhatsApp.

