



# How much loss did the wind turbine generator have





## Overview

---

3E's analysis shows that 85% of turbines experienced performance decline, with nearly half exhibiting statistically significant degradation. In many cases, losses exceeded 0. It's not just about wear and tear. Yes, turbine. Unexpected and increasing wind turbine failure rates, largely in newer and bigger models, are savaging the profits of some of the world's biggest manufacturers, as Siemens Gamesa, GE and Vestas report heavy repair and maintenance losses. Faulty components created a €472 million (\$A28 million) hole. This paper discusses generator reliability covering the technology evolution over the last 20 years. EPRI's Wind Network for Enhanced Reliability (WinNER) web-based tool and Shermco Industries databases are presented, and conclusions are drawn regarding failures specific to generator design. How risky are wind turbines, and who pays when they fail?

For insurers looking to offer protection to this fast-growing industry, these questions are crucial. Wind Turbine Bearing Failure What is it?

. Wind turbines fail around twice every year with an average downtime of 150 h per failure. Not only do I face financial losses and increased energy costs, but the environment also pays the price. Carbon emissions surge, straining the power grid and undermining our efforts to reduce our carbon footprint.



## How much loss did the wind turbine generator have



### [How Much Energy Is Lost In Wind Power](#)

In Germany, 150 GW-hours of wind-generated electricity were lost in 2010, with the loss increasing year-over-year due to turbines being taken offline to stabilize the power supply, according ...

### [Evaluation of Energy Losses in a Wind Farm](#)

Evidently, there are expected and unavoidable power losses within the wind farm. However, when there are unexpected power losses or the power losses exceed what is expected, the question arises as to ...

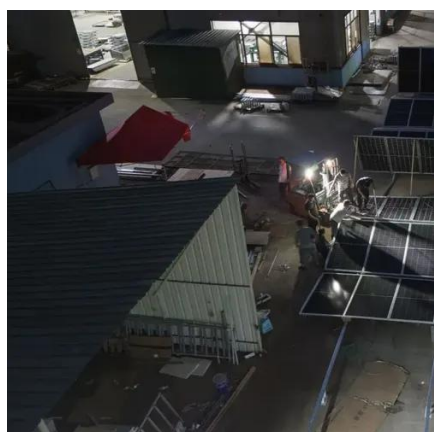


### [Wind Turbine Generator Breakdown: Impact and Solutions](#)

When a wind turbine generator breaks down, I'm hit with a double whammy of financial losses and environmental consequences, as the sudden loss of power generation leads to a surge in ...

### [Wind Turbine Failures Review and Trends](#)

The unpredictability of wind generation attributed to climatic conditions and low robustness can cause isolated turbine shutdowns and sometimes the disconnection of an entire wind farm from the electric ...



## Wind Farm Energy Loss Factors

There is considered to be six main sources of energy loss for wind farms, each of which may be subdivided into more detailed loss factors: curtailments. A rather comprehensive list of potential ...

## [Wind Turbine Failures: Causes, Consequences, and Impact on](#)

Understanding common failure causes in wind turbines is essential for optimising performance and reducing maintenance costs. This article explores seven key failure types, ...



Deye inverters and Deye batteries are more compatible.

## [Wind Turbine Generator Reliability Analysis To Reduce ...](#)

Each of these generator failure events lead to significant loss of production and unplanned repair costs (\$100,000-\$225,000). The following are the key issues that operators have been trying to address in ...

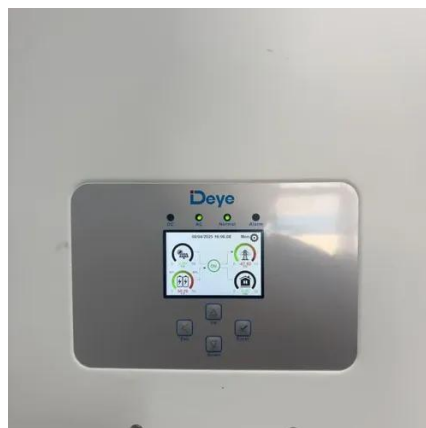


## [Wind Turbine Failures Raise Concerns For](#)



## Insurers: Who

While bad weather causes much of the turbine loss and damage, manufacturing problems and defects can also take their toll. If failures happen in the typical warranty period -- five ...



## **Report - The hidden cost of wind: why turbine degradation deserves ...**

3E's analysis shows that 85% of turbines experienced performance decline, with nearly half exhibiting statistically significant degradation. In many cases, losses exceeded 0.4% per year, ...

## Wind turbine failure rates are rising

Unexpected and increasing wind turbine failure rates, largely in newer and bigger models, are savaging the profits of some of the world's biggest manufacturers, as Siemens Gamesa, GE and ...





## Contact Us

---

For catalog requests, pricing, or partnerships, please visit:

<https://id2market.eu>

Phone: +34 910 56 87 45

Email: [info@id2market.eu](mailto:info@id2market.eu)

Scan the QR code to access our WhatsApp.

