



# How much material can be used for one square meter of photovoltaic panel





## Overview

---

Here's the deal - you can typically fit between 80W to 200W of solar capacity per square meter, depending on your roof type. Let me explain why this range matters: Modern 450W panels measure about 2. Do the math - that's 186W/m<sup>2</sup> before accounting for installation. Solar panels have become a cornerstone of renewable energy, but many wonder: How much power can a single square meter of solar panels actually produce?

Let's break down the science behind photovoltaic efficiency. Under optimal conditions (5 peak sun hours): At noon under direct sunlight: \*Note: 1m<sup>2</sup>. Estimate your solar energy production per m<sup>2</sup> with accurate calculations for any location. Free calculator with multiple units, efficiency modes, and detailed visualizations. Explore. When we talk about "1 square photovoltaic panel construction cost," we're essentially asking: How much does it take to install a solar energy system covering one square meter?

But here's the kicker - this simple question hides layers of complexity that could make an onion cry.



## How much material can be used for one square meter of photovoltaic



### How Much Power Does 1 Square Meter of Photovoltaic Panels ...

Solar energy is reshaping how we power homes and businesses, but many wonder: how much electricity can a single square meter of photovoltaic panels realistically produce each year? Let's ...

### [Solar Energy Generation Per Square Metre: A Complete Guide](#)

In this guide, we'll explore how much solar power can be harnessed per square metre, how solar panels work, the factors that impact their efficiency, and the home solar system cost.



### How much electricity does solar energy generate per square meter

Global estimates indicate that solar panels can generate anywhere between 100 to 200 watts per square meter under optimal conditions, which is a crucial figure in evaluating solar energy's ...

### [Solar Energy Per Square Meter: How Much Power Can You Get?](#)

This article explores solar energy per square meter and the various factors that influence energy output, such as location, climate, and panel efficiency. It provides crucial calculations, ...



### [Solar Power Per Square Meter Calculator](#)

Calculate solar panel energy output per square meter. Get accurate daily, monthly, and annual production estimates based on location, panel specs, and system losses. Supports m<sup>2</sup> and ft<sup>2</sup>, ...



### [1 square meter solar photovoltaic panel](#)

The average solar panel has an input rate of roughly 1000 Watts per square meter, while the majority of solar panels on the market have an input rate of around 15-20 percent.



### [Solar Panel Watts Per Square Meter Explained](#)

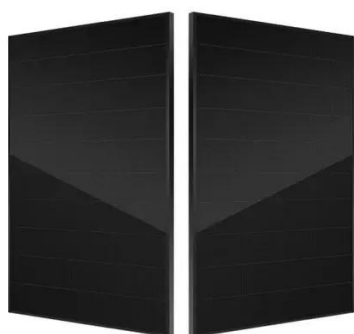
Learn how to measure solar panel efficiency using solar panel watts per square meter with this comprehensive guide.



## Solar Panel Output Per Square Meter



Discover how much electricity solar panels generate per square meter, explore efficiency factors, technology comparisons, and future innovations in photovoltaic energy.



## How Many Solar Panels Fit in One Square Meter? The Ultimate Guide

Here's the deal - you can typically fit between 80W to 200W of solar capacity per square meter, depending on your roof type. Let me explain why this range matter

## Understanding 1 Square Meter Photovoltaic Panel Construction Costs ...

When we talk about "1 square photovoltaic panel construction cost," we're essentially asking: How much does it take to install a solar energy system covering one square meter?





## Contact Us

---

For catalog requests, pricing, or partnerships, please visit:

<https://id2market.eu>

Phone: +34 910 56 87 45

Email: [info@id2market.eu](mailto:info@id2market.eu)

Scan the QR code to access our WhatsApp.

