



How much power does a 12V 300W inverter have





Overview

This high efficiency DC-AC inverter converts 12 Volts DC to 300 Watts of pure sine-wave AC power at 120 Volts, 60 Hz. The unit comes with detachable cable with 12V plug adaptor and cable with battery clamps. Features include overload protection, low battery alarm / shut down, low. Quick answer: 300W at 12V draws 25 Amps. But in reality, you should plan for about 30 Amps to cover efficiency losses. The calculation itself is straightforward, based on Watt's Law. I have listed down the estimated amperage draw values for a range of common inverter wattages. A 100 Watt Inverter typically draws around 10. Using the formula: Amps = Watts ÷ Volts For a 300-watt load at 12 volts: Want OEM lithium forklift batteries at wholesale prices?

[Check here.](#)



How much power does a 12V 300W inverter have

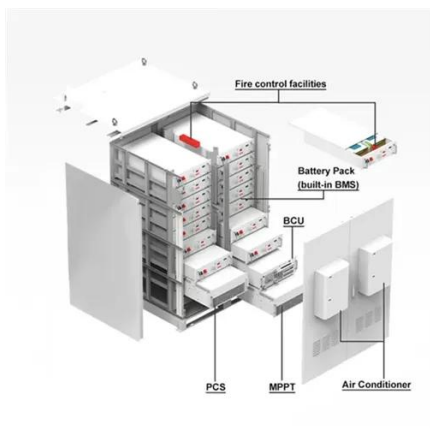


[Unlocking the Power of 300W Inverters: What Can They Run?](#)

To choose the right 300W inverter for your needs, consider the devices you want to run, their power consumption, and the inverter's capacity. Also, think about the inverter's efficiency, surge ...

[The Only Inverter Size Chart You'll Ever Need](#)

We have summarized the appliances that inverters from 300W to 3000W can run depending on their rated maximum power. Note to our readers: Use the above formula to determine ...



300 Watt Pure Sine Wave Inverter , 12VDC-120VAC , PST-300-12

This high efficiency DC-AC inverter converts 12 Volts DC to 300 Watts of pure sine-wave AC power at 120 Volts, 60 Hz. The unit comes with detachable cable with 12V plug adaptor and cable with battery ...

How Many Amps Does a 100, 300, 500, 600, 750, 1000, 1500, 3000, ...

In this article, we will be revealing the estimated amps of inverters with different watt powers. We will also explain why is it difficult to derive the exact amps. Go through the article, find ...

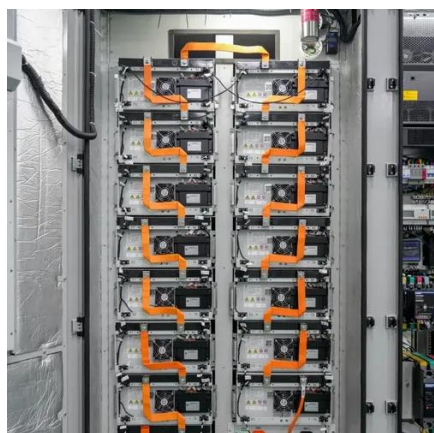


[How to Calculate Amperage for 300 Watts at 12 Volts?](#)

Quick answer: 300W at 12V draws 25 Amps. But in reality, you should plan for about 30 Amps to cover efficiency losses. Let's break down the math, safety rules, and why that 300W device ...

[12v 300w Inverter, 12v to 110v/220v Power Inverter](#)

In general, the efficiency of inverters is more than 80%-90%, that is, input power is 300W and output power is 240W-270W, so the inverter consumes nearly 30W-60W of power. Conversion efficiency ...



What Size Inverter Do I Need?

Surge is the maximum power that the inverter can supply, usually for only a short time (usually no longer than a second unless specified in the inverter's specifications). Some appliances, particularly those ...

AIMS POWER 300-Watt Pure Sine



Inverter 12-Volt DC to 120-Volt AC

For over a decade the AIMS POWER Pure sine wave Power Inverters has consistently delivered the broadest range of sizes to accommodate virtually every power requirement.



How Many Amps Does a 100, 300, 500, 600, 750, 1000, 1500, 3000, ...

We have summarized the appliances that inverters from 300W to 3000W can run depending on their rated maximum power. Note to our readers: Use the above formula to determine ...

[Best 300w 12v Inverter \[Updated: February 2026\]](#)

Power Output: The power output of a 300W 12V inverter is critical for determining what devices you can run. This output indicates the maximum power the inverter can deliver at once.



[Power and Amperage: Calculations for 300 Watts at 12 Volts](#)

A 300-watt load at 12 volts requires 25 amps. When selecting a battery and inverter, always consider real-world factors such as efficiency, battery capacity



Contact Us

For catalog requests, pricing, or partnerships, please visit:

<https://id2market.eu>

Phone: +34 910 56 87 45

Email: info@id2market.eu

Scan the QR code to access our WhatsApp.

