



How much power does a 1kW inverter provide





How much power does a 1kW inverter provide

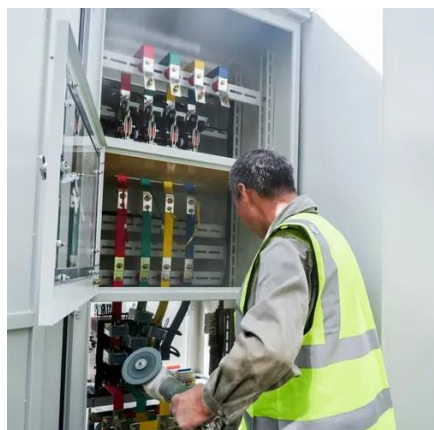


1000 Watt DC Solar Inverters

These inverters can handle a range of power sources from 1,000 watts to 1,999 watts. Compare these 1kW solar inverters from Fronius, SMA, Schneider Electric, Xantrex, PV Powered, Power One, ...

Inverter Capacity Calculator

To calculate the inverter capacity, multiply the power requirement of each device by the number of that type of device. Sum up these products for all devices. The result is the total power ...



[Understanding Inverter Power Ratings: kW vs kVA Explained](#)

kW refers to the real or usable power output of an inverter. kVA represents the total power capacity it can carry, including power lost in phase difference (reactive power). For example, an inverter rated at ...

How Much Current Does a 1KW Inverter Have? A Practical Guide for ...

Pro Tip: Always add 20% buffer to your power needs. A "1KW" inverter actually delivers 800-900W continuously.



[1kW Solar System: All You Need to Know](#)

How Much Power Can a 1kW Solar System Generate? In most areas: A 1kW solar system can produce around 4 to 5 kWh a day. In a month, this adds up to about 120 to 150 kWh. Over a ...

[Best Inverter 1kw 3kw 6kw \[Updated: February 2026\]](#)

While the power output covers a broad range, from 1KW up to 8KW, the smaller models are perfect for most travel and emergency needs. The multifunctional sockets make hooking up ...



ESS



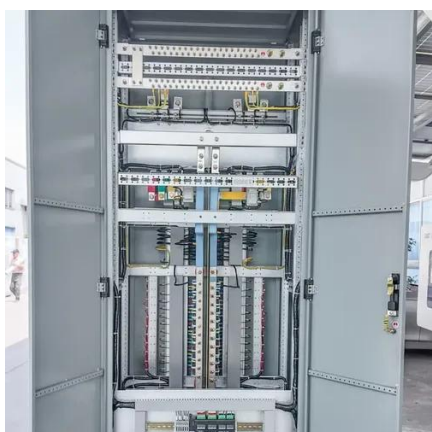
[The Only Inverter Size Chart You'll Ever Need](#)

We have created a comprehensive inverter size chart to help you select the correct inverter to power your appliances.

What can be run On 1 kW solar panel



To run a 1 kW load, you can use a 2kva solar inverter on which you can run a load of 1kw to 1.5kw. If you have installed a 1 kW solar system in which you have taken a solar inverter on which ...



[What Will An Inverter Run & For How Long? \(With Calculator\)](#)

Normally inverter efficiency rates are between 85-95%. But the most standard rate is 85% so we'll take an 85% efficient inverter as an example. So because of the inverter's efficiency rate, ...

How Much Power Does the Inverter Usually Produce? A Complete Guide

Understanding inverter power output is critical for optimizing solar energy systems. This guide breaks down key factors, industry trends, and real-world examples to help you make informed decisions.





Contact Us

For catalog requests, pricing, or partnerships, please visit:

<https://id2market.eu>

Phone: +34 910 56 87 45

Email: info@id2market.eu

Scan the QR code to access our WhatsApp.

