



How thick is the wind barrel of the power generation fan





Overview

Wind turbines that are used for power generation have numerous applications for cooling fans. Although fans are fundamentally selected on the basis of volumetric air flow, static pressure and size, numerous other factors must be considered for wind turbine. double inlet centrifugal fan with forward curved centrifugal impeller (Type: DRA) double inlet centrifugal fan with backward curved centrifugal impeller (Type: DHA) variable mounting positions possible air volumes up to 28. 000 m³/h (16,400 cfm) total pressure increase up to 1. This article reviews some of. Since 1981 we have been developing and producing adjustable external rotor motors, fans and air handling units. generator is the heart of the wind turbine. the process of converting kinetic energy to electrical heat is generated. Rosenberg Fans, as part of cooling systems, ensure the needed load. A wind turbine's nacelle houses a shaft, gearbox, brake, bearings, generator and other essential and complex components that generate copious amounts of heat.



How thick is the wind barrel of the power generation fan



Wind Turbine Cooling

With many years of experience and a well-earned reputation for providing rugged and dependable fans, we strive to simplify our customers' design process by working with them to develop custom 3D fan ...

FANS FOR WIND TURBINES

Whether on Onshore wind turbines or at Offshore wind parks, with extremely salty air and high risk of corrosion - Rosenberg fans and air handling units meet the highest requirements!



[Fans for wind: Industrial solutions for alternative energy](#)

Wind turbines that are used for power generation have numerous applications for cooling fans. Although fans are fundamentally selected on the basis of volumetric air flow, static pressure and size, ...

[Fans for wind turbines , Wind turbine cooling , ZIEHL-ABEGG](#)

Using special fans for wind turbines, the heat load can be efficiently reduced and cooling of the relevant components ensured, even at the height of summer. In addition, efficient cooling increases the ...



Fans for wind turbines

As an innovation partner for many companies, we have many years of experience with products for wind turbines as well as application fields such as offshore industry, agriculture, chemical industry ...



Fans for wind turbines

The pitch systems in wind turbines ensure that the rotor blades have the optimum setting so that they always work at the optimum operating point. Even in strong winds, they must reliably ensure that the ...



Wind turbine cooling fan

Commonly used to move air at medium to high pressures, Continental Fan's backward curved fans are non-overloading and have highly efficient true airfoil impellers to reduce noise and maximize ...

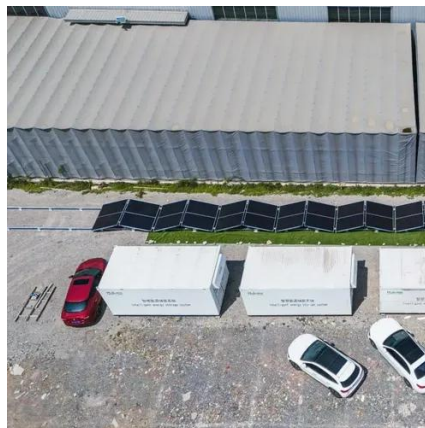


[Development of Wind Power Based Micro-](#)



Generation

This work discusses the use of wind turbine to exploit the wastage wind power of an exhaust fan to rotate a micro-wind turbine to produce electricity.



High-Performance Cooling Fans for Wind Turbines - AFL Custom ...

What are the technical specifications for cooling fans in wind turbines? Our turbine cooling fans come in various models with specifications that include adjustable airflow rates, IP ...

Windenergie_Broschüre_EN dd

Industry-specific solutions Fans for wind turbines
Axial fans type: AND/ANDB/DR/DQ AND/ANDB
Axial fans with standard driven motor and adjustable blades made of diecast aluminium. (Air volumes up to ...





Contact Us

For catalog requests, pricing, or partnerships, please visit:

<https://id2market.eu>

Phone: +34 910 56 87 45

Email: info@id2market.eu

Scan the QR code to access our WhatsApp.

