



How to calculate the weight of photovoltaic panel load





Overview

Provide panel count, dimensions, and weights. Use a custom array area if gaps or spacing are significant. To calculate the solar panel roof load, you'll want to dive into two main areas: point load and distributed load. The point load represents the pressure applied to specific points where the solar panels and their mounting hardware attach to the roof. Roof slopes, rafters, and existing structural capacity influence whether a retrofit is feasible without reinforcement. 5 feet wide and weigh between 40 to 50 pounds. However, the exact dimensions depend heavily on the panel's technology, wattage, and the manufacturer's design. It covers estimating dead loads, accounting for live loads such as snow and wind, and structural considerations professionals. Calculations - The weight of the complete system, including all of the working fluid in thermal systems, the weight of the complete system per square foot, and the concentrated load at each mounting location.



How to calculate the weight of photovoltaic panel load

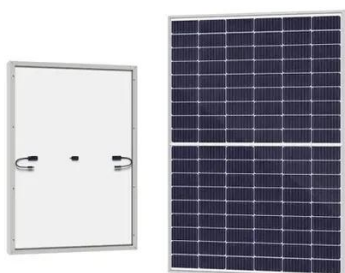
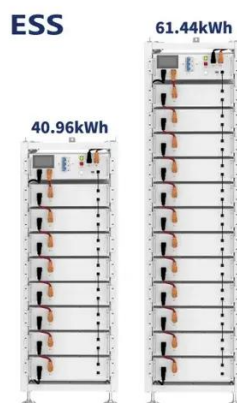


[How to calculate the load of solar panels, NenPower](#)

To determine the load of solar panels, several essential points should be considered: 1. Understanding the concept of load, 2. Factors influencing the calculation, 3. Methods for calculating ...

Weight of Solar Panels on Roof: Understanding Panel and System Load

To understand how much weight a given system adds to a roof, a practical rule of thumb is to sum the panel weight, the mounting hardware weight, and any ballast or anchors used for stability.



[How Much Weight Do Solar Panels Add to a Roof?](#)

For most residential pitched roofs, a solar array adds a relatively small and manageable amount of weight per unit of area. The total weight of a flush-mounted system, which includes the ...

Solar Panel Roof Load Calculator

To calculate the solar panel load, sum the weight of all panels and the mounting system, then assess point load at attachment points and distributed load over the roof area.



[Roof Solar Panel Mount Weight & Wind Load Calculator](#)

Estimate panel weight, ballast, and wind uplift for rooftops. Handles pitched and flat roofs with safety. Get quick calculations, exports, and clear step guidance today.



Weight of Solar Panels on Roof: Understanding Mass, Roof Load, and

Solar panels add valuable energy to homes, but their weight matters for roof integrity. This article explains typical panel weights, how mounting hardware contributes to total mass, and ...



[Solar Array Weight and Loading Calculation Worksheet](#)

Solar panels and all mounting hardware (frame, rails, etc.) weight does not exceed five (5) pounds per square foot (psf) or 45 pounds (lbs) concentrated load at each point of attachment or support, with a ...



The Ultimate Guide to Solar Panel



Size, Weight & Wattage (2025)

Understanding these specifications is crucial for determining roof suitability, calculating structural loads, and planning your solar installation. In this comprehensive guide, you'll discover:

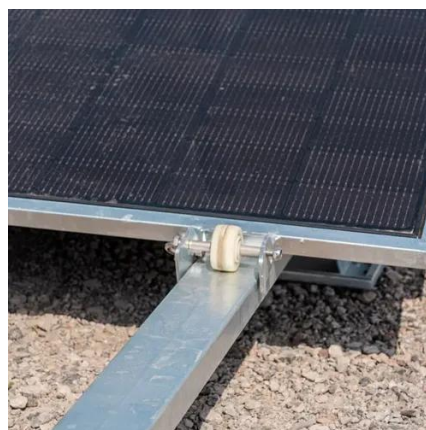


Solar Power System Load Calculation Made Simple: Never Size ...

Whether you're powering a factory or a home, solar power system load calculation is the first and most critical step in design. In this guide, we break the process down and equip you with ...

Solar Panel Roof Load Calculator

This article explains some of the core factors determining whether a roof can support a solar system and provide a formula to determine your roof load. This solar panel roof load calculator ...



Solar Panel Roof Load Calculator

To understand how much weight a given system adds to a roof, a practical rule of thumb is to sum the panel weight, the mounting hardware weight, and any ballast or anchors used for stability.





Contact Us

For catalog requests, pricing, or partnerships, please visit:

<https://id2market.eu>

Phone: +34 910 56 87 45

Email: info@id2market.eu

Scan the QR code to access our WhatsApp.

