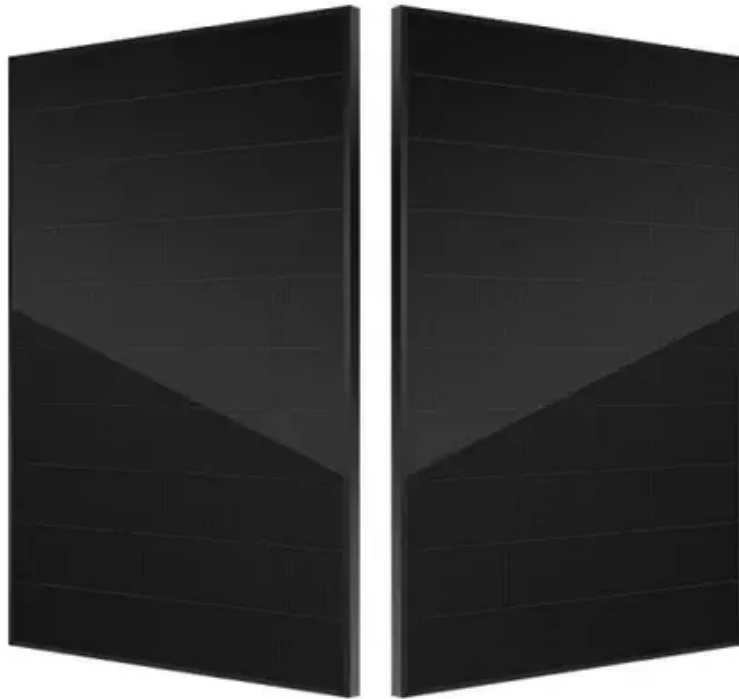


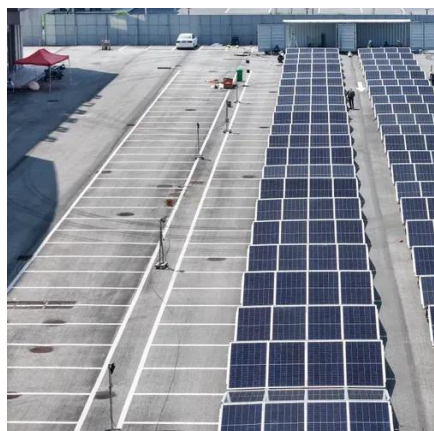


How to charge a low power battery cabinet





How to charge a low power battery cabinet



[Product Manual: Storemasta Lithium-ion Battery Cabinet](#)

This step-by-step guide outlines how to install and maintain a Storemasta battery charging and storage cabinet for optimum performance.

What is a Battery Charging Cabinet? A Complete Guide to Safe ...

Discover the importance of a battery charging cabinet for safely storing and charging lithium-ion batteries. Learn about features, risks, fire protection, and best practices for workplace ...



[Lithium-Ion Battery Charging Cabinet , Securall](#)

Our battery charging cabinets are more than enclosures--they are risk mitigation tools, compliance enablers, and asset protectors. With optional customization available, we're ready to meet even the ...

The Ultimate Guide to Battery Charging Cabinets: Safe Storage and

Discover the importance of battery charging cabinets for safe lithium-ion battery storage. Learn about key features, benefits, and best practices for workplace safety.



Mitsubishi Electric Power Products, Inc. BC43 Battery Cabinet

Battery cabinets that are not supplied with an incorporated DC output disconnect device must have an appropriate disconnect device provided external to the cabinet.

CellBlock Battery Fire Cabinets

CellBlock Battery Storage Cabinets are a superior solution for the safe storage of lithium-ion batteries and devices containing them. Our practical, durable cabinets are manufactured from aluminum, and ...



[Product Manual: Storemasta Lithium-ion Battery Cabinet](#)

Before You Install Your Cabinet
Installation Door Closing System
Post-Installation Check
Maintenance Installation in Underground Premises
Get in Touch
Further Resources
Using a trolley or stair lifter, retrieve the battery cabinet from the delivery area (leaving the packaging on.)
Take the cabinet to the installation location.
Carefully unwrap the battery charging and storage cabinet. Remove it from the wooden pallet.
The cabinet will already be equipped with footing that allows it to be put in place on the flat,



even surface with little to no fuss. Using a trolley or stair lifter, retrieve the battery cabinet from the delivery area (leaving the packaging on.) Take the cabinet to the installation location. Carefully unwrap the battery charging and storage cabinet. Remove it from the wooden pallet. The cabinet will already be equipped with footing that allows it to be put in place on the flat, even surface with little to no fuss. Scan the warranty registration QR code (or enter the link into your browser) and complete the Storemasta warranty application form. See more New content will be added above the current area of focus upon selection See more on [blog.storemasta](http://blog.storemasta.com) Atlantic Battery Systems, Inc [PDF]

Battery Cabinet

This manual contains information on Atlantic Battery Systems battery cabinets. The information in this manual is intended for Qualified Installers, Equipment Engineers, and Field Support Personnel.

[Lithium-Ion Battery Charging Safety Cabinet](#)

Use the chart below to identify the energy of your batteries and how many can ...



The Secret Sauce Behind Efficient Charging for Low-Power Devices

Enter Low Current Mode - a groundbreaking feature that promises to revolutionize the way we charge our low-power devices. In this comprehensive guide, we'll delve into the world of Low ...

Battery cabinet for safely charging



lithium-ion batteries , Batteryguard

With a Batteryguard battery cabinet, you charge and store your batteries with complete peace of mind. You protect your staff, prevent damage, and meet the requirements of your insurer.



[Lithium-Ion Battery Charging Safety Cabinet](#)

Use the chart below to identify the energy of your batteries and how many can be in the Justrite lithium-ion battery charging cabinet at one time. Keep your batteries easily accessible while they charge in a ...

Battery Cabinet

This manual contains information on Atlantic Battery Systems battery cabinets. The information in this manual is intended for Qualified Installers, Equipment Engineers, and Field Support Personnel.





Contact Us

For catalog requests, pricing, or partnerships, please visit:

<https://id2market.eu>

Phone: +34 910 56 87 45

Email: info@id2market.eu

Scan the QR code to access our WhatsApp.

