



How to connect solar inverter to wireless network





Overview

This article provides a clear, step-by-step guide on how to connect solar inverter to wifi , ensuring seamless integration and real-time performance tracking. To connect a solar inverter to Wi-Fi, you generally need to have a smartphone or computer available to configure the network settings for the inverter's built-in Wi-Fi access point. The exact process can vary depending on the inverter's make and model, but typically involves going into its network. With TechFine's intelligent solar inverters equipped with integrated WiFi modules for solar inverters, users can now monitor their system remotely via a smartphone or web portal. The status of your Wi-Fi connection should be 'disconnected'. Most modern inverters come with built-in WiFi capabilities, giving homeowners the ability to track energy production, system efficiency, and even receive alerts when there's a problem.



How to connect solar inverter to wireless network



[How to Connect Solar Inverter to WiFi: A Step-by-Step ...](#)

Learn how to connect solar inverter to WiFi with our simple, step-by-step guide. Perfect for eco-friendly tech enthusiasts keen on renewable energy.

Wi-Fi Solar Inverters: How They Work & How to Connect Them (2026)

We'll cover everything you need to know about Wi-Fi solar inverters, like getting real-time information on your solar system and establishing a Wi-Fi connection between your network and ...



How to connect a photovoltaic inverter to a wireless network

Connecting your solar inverter to WiFi is a great way to remotely monitor and manage your solar system. By following these steps, you can easily establish a connection and begin tracking the performance ...



[How to Connect Your Solar Inverter to WiFi](#)

This guide will help you connect your solar inverter to WiFi, using common inverter models as a general reference.



Quick Installation Guide

This quick guide describes how to connect a SolarEdge Wi-Fi device to a network. WPS (Wi-Fi Protected Setup) is a system built into modern broadband routers which allows pairing of devices ...

[How to Set Up and Configure Your Solar Inverter WiFi Module](#)

By following the steps outlined in this article, you can easily connect your inverter to WiFi and start enjoying the benefits of remote monitoring, data logging, and firmware updates.



Why Connect Your Solar Inverter to WiFi? Unlocking the Benefits of

This technological integration improves the overall operation and dependability of solar systems and is not merely a luxury. In this article, we will explain how to connect solar inverter to ...

How To Connect Solar Inverter To



WiFi - TechFine Step-by-Step Guide

This article provides a clear, step-by-step guide on how to connect solar inverter to wifi, ensuring seamless integration and real-time performance tracking.

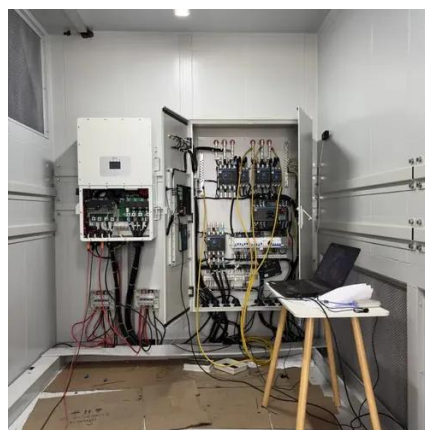


Configuring Inverter Communication

Select your preferred wireless network and insert a password, then click "join." You will now be connected to your Wi-Fi network. To confirm the connection is successful, click on "inverter ..."

Wi-fi Solar Inverters: How do they work? How to connect them?

But it is no more. With the introduction of Wi-Fi solar Inverters, you can connect and monitor A to Z aspects in real-time--scan power to voltage and many more aspects of your solar ...





Contact Us

For catalog requests, pricing, or partnerships, please visit:

<https://id2market.eu>

Phone: +34 910 56 87 45

Email: info@id2market.eu

Scan the QR code to access our WhatsApp.

