



How to connect the LONGi photovoltaic panel to the electricity meter





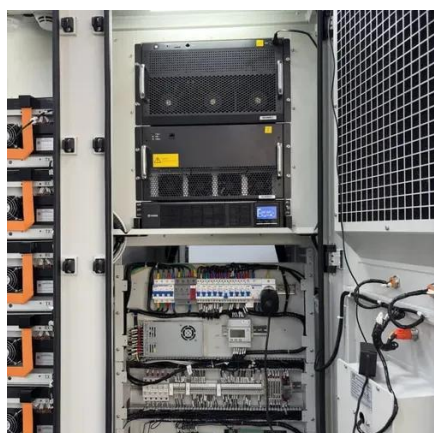
Overview

This manual elaborates on installation and safety use information for PV power generating modules (hereinafter referred to as module) of LONGi Solar Technology Co. Please abide by all safety pr is to be carried out by qualified personnel. Please read this manual carefully before install- ing and using this module, Installation personnel shall get familiar with mechanic I and electrical requirements of this. All contents in this manual are intellectual properties of LONGi which originates from long term of technical exploration and experience accumulation of LONGi. 1 Modules identification Three labels on the module contain the information below:

1. This manual will introduce you to the basics of wiring solar panels, including types of wires and their characteristics, as well as some handy tips for successful installation.



How to connect the LONGi photovoltaic panel to the electricity meter



[Installation Manual for LONGi Solar PV Modules](#)

This manual elaborates on installation and safety use information for PV power generating modules (hereinafter referred to as module) of LONGi Solar Technology Co., Ltd. (hereinafter referred to as ...

[Installation Manual For LONGI PV Modules](#)

This document provides installation instructions for LONGi Solar PV modules. It discusses module identification, electrical and mechanical installation requirements, safety precautions, site selection, ...



[LONGI LR6-60-M SERIES INSTALLATION MANUAL Pdf Download](#)

Installation shall follow the demonstration and suggestions below. If installation mode is different, please consult LONGi customer service personnel and obtain approval. Otherwise, modules may be ...

The Ultimate Guide to Solar Cables: Everything You Need to Know ...

Steps are important when it comes to connecting. First of all, the solar panels have MC4 connectors or similar devices for tight and weatherproof connections. Solar cables are connected to ...



[LONGi Photovoltaic Modules Installation Guide](#)

The application level of LONGi Solar module is Class II, which can be used in systems operating at > 50 V DC or >240 W. where general contact access is anticipated;

[Longi Photovoltaic Panel Installation Instructions](#)

This manual elaborates on installation and safety use information for PV power generating modules (hereinafter referred to as module) of LONGi Solar Technology Co., Ltd. (hereinafter



The Ultimate Guide to Wiring Solar Panels: Basics and Tips for Solar

Electrical wires for solar panels are necessary for efficient electricity transmission from the panels to the inverter and then to the power grid or battery storage. Three main types of wire are ...



[LONGi PV Module Installation Guide , PDF ,](#)



Solar Panel

LONGi PV modules pass the strict PID tests before delivery, and the negative pole of modules usually does not need to be grounded, so it is compatible with isolated inverters and non-isolated inverters.



Longi

LONGi reserves the rights for modifying product manual or installation manual without notice in advance. If customers fail to install modules as per requirements set forth in



Contact Us

For catalog requests, pricing, or partnerships, please visit:

<https://id2market.eu>

Phone: +34 910 56 87 45

Email: info@id2market.eu

Scan the QR code to access our WhatsApp.

