



How to fix photovoltaic panels on color steel tiles





Overview

This guide addresses the specific pain points of working with pre-fabricated metal roofing systems while ensuring code-compliant, weatherproof connections. The process for installing solar photovoltaic on color steel tiles necessitates careful planning, adherence to local regulations, and precise execution. Your tile is weatherproof but not weight-proof. If you should use the wrong drill bit, you will cause too much vibration as you are drilling through the tile. Color steel tile roofs, commonly used in industrial and commercial buildings, are lightweight and corrosion-resistant but require precise load assessment before installing flexible solar panels. Pure Solar recommends a dual-dimensional evaluation: ?

- 1.



How to fix photovoltaic panels on color steel tiles

Support Customized Product



How to install the colored steel tiles on photovoltaic brackets

Zeoluff's color steel tile roof photovoltaic bracket system has unique connection design, simple and fast installation, strong wind resistance, and can achieve installation without penetrating the roof structure.

Tutorial on installing photovoltaic panels on colored steel tiles

In this comprehensive guide, we will walk you through everything you need to know about color steel tile roof solar mounting systems - from their advantages and optimal placement



[installing solar panels on tile roof guide](#)

Learn how to safely install a solar panel on tile roof without breaking tiles. Comprehensive guide with step-by-step instructions. Start saving energy now!

How to Install Flexible Solar Panels on Color Steel Tile Roof?

Color steel tile roofs, commonly used in industrial and commercial buildings, are lightweight and corrosion-resistant but require precise load assessment before installing flexible solar panels.



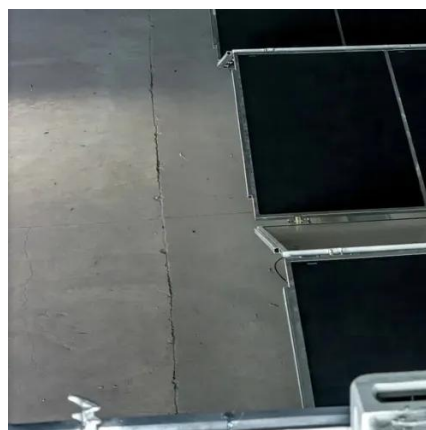
The Ultimate Guide to Color Steel Tile Roof Photovoltaic Bracket

Installing photovoltaic brackets on color steel tile roofs is a straightforward but crucial part of any solar energy system. By following the proper steps, adhering to best practices, and avoiding ...



How to Construct Colored Steel Tile Photovoltaic Panels: A Step-by ...

But what if I told you your colored steel tile photovoltaic panels could turn that boring roof into a power plant that pays you? We're talking Swiss Army knife functionality here: weather protection, aesthetic ...



How to Connect Photovoltaic Panel Plugs on Color Steel Tile Roofs: A

When installing photovoltaic panels on color steel tile roofs, the plug connection process becomes particularly challenging due to the roof's unique corrugated surface.



- ✓ 100KWH/215KWH
- ✓ LIQUID/AIR COOLING
- ✓ IP54/IP55
- ✓ BATTERY 6000 CYCLES

[How to fix the color steel tile photovoltaic](#)



panel

Roof-integrated solar panel installation is a simple process with Marley SolarTile® #174; - just secure the fixings, place the first tile, push-fit additional tiles and then attach final fixings and flashings.



How to install solar photovoltaic on color steel tiles

In summation, undertaking the process of integrating solar photovoltaic systems on color steel tiles demands a structured approach that considers design specifics, material selection, and ...

How Are Solar Panels Fixed to Tiles?

Mounting solar panels on tiled roofs can be a seamless process when using the right tools and methods. By choosing specialized components like those provided by SIC Solar and ...





Contact Us

For catalog requests, pricing, or partnerships, please visit:

<https://id2market.eu>

Phone: +34 910 56 87 45

Email: info@id2market.eu

Scan the QR code to access our WhatsApp.

