



How to get EMS into Peruvian communication base station





Overview

In the first episode, I'll share with you how I am programming my HT radios to:1. Build an information gathering system3. An emergency communication system is necessary for first responders, who need to enter areas with no network coverage or damaged network infrastructure due to n We develop a prototype of a proposed mobile base station and test its operation in an outdoor environment. Scan local news. The scope of this research encompasses the global wireless communication base station market, focusing on the development, deployment, and technological evolution of base station infrastructure essential for wireless networks. The analysis covers key market segments, regional dynamics, and. Communication in EMS is essential. To cope with the problem of no or difficult grid access for base stations, and in line with the policy trend of energy saving and emission reduction, Huijue Group has launched an. The EMS1 EMS Communications product category features products and information for researching EMS communications. Lessons from agencies mastering real-time collaboration under pressure Is consolidating emergency communications centers right for your agency?

The EMS1 EMS Communications product.



How to get EMS into Peruvian communication base station



[How I Program My Radio for Emergency Communication](#)

In the first episode, I'll share with you how I am programming my HT radios to: 1. Provide local communication more

Energy Storage Equipment, Energy storage solutions, Lithium battery

To cope with the problem of no or difficult grid access for base stations, and in line with the policy trend of energy saving and emission reduction, Huijue Group has launched an innovative ...



[Peruvian Communications Emergency Base Station 7MWh](#)

In Peru, part of an initiative to gradually increase the nation's internet coverage required the building of multiple base stations in three large regions with rough terrain and limited access to

[Dispatch and Proper Use of Radio Communications](#)

All Emergency Responders - police, fire and EMS - require a reliable method of communication between themselves and the Dispatch Center. For decades, two-way radio has been the standard.



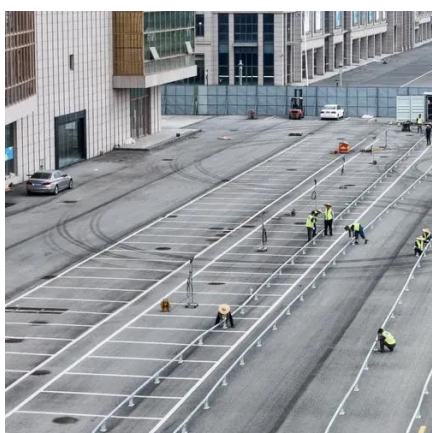
[Communications-EMT -- Hopper Institute®](#)

Communication in EMS is essential. Patients must be able to access the system, the system must be able to dispatch units, EMTs must have a means of communicating with medical direction and ...



[Peruvian Communications Emergency Base Station 7MWh](#)

Emergency Communications Portable Base Stations I & II To solve these problems, I decided to build a portable base station that can be used for voice, packet and APRS on 2 meters and 70 cm. This ...



[Wireless Communication Base Station Market Scope Outline](#)

The scope of this research encompasses the global wireless communication base station market, focusing on the development, deployment, and technological evolution of base station ...

[Communications and Dispatching .](#)



Cooney's EMS Medicine

Describe alternatives to radio for communications. Discuss new technology, including the transmission of ECGs, real-time telemetry, and video streaming from the field.



Communications

Lessons from agencies mastering real-time collaboration under pressure. Is consolidating emergency communications centers right for your agency? The EMS1 EMS Communications product ...



Contact Us

For catalog requests, pricing, or partnerships, please visit:

<https://id2market.eu>

Phone: +34 910 56 87 45

Email: info@id2market.eu

Scan the QR code to access our WhatsApp.

