

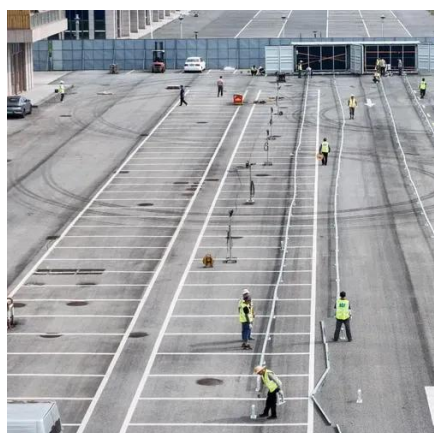


How wide are wind turbine blades





How wide are wind turbine blades



How Big Are Wind Turbine Blades?

The Scale of Modern Turbine Blades Modern wind turbine blades are divided into two size classes based on deployment location: onshore and offshore. On land, utility-scale turbine blades ...

2.1.2 Turbine blades , Building Offshore Wind in Ireland

Nacelles are assembled by the wind turbine supplier, using components generally sourced from a range of external suppliers. Typical dimensions for a 15 MW turbine are 21 to 25 m long, 9 to 12 m wide and ...



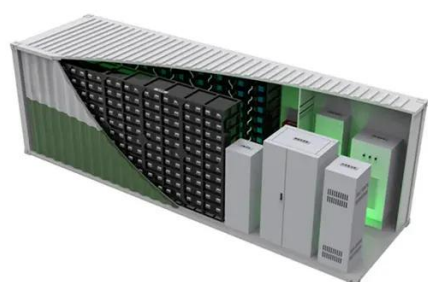
How Big Is a Wind Turbine Blade? Exploring the Impressive Scale ...

The length of a wind turbine blade directly impacts its wind-swept area; longer blades mean more wind captured and thus more power generated, with power output increasing ...



How Big Are Wind Farm Blades

The size of wind turbine blades depends on the size of the wind turbine, local wind speed, and local regulations. Larger blades are ideal for commercial applications and areas with high ...



What Are The Dimensions of a Wind Turbine?

The size of wind turbine blades depends on the size of the wind turbine, local wind speed, and local regulations. Larger blades are ideal for commercial applications and areas with high ...

How Long Are Wind Turbine Blades? Sizes, Materials & Trends

Introduction How Long Are Wind Turbine Blades? It's the first question investors, engineers, and logistics managers ask, because blade length dictates swept area, annual-energy ...



Wind Turbines: the Bigger, the Better

Since the early 2000s, wind turbines have grown in size--in both height and blade lengths--and generate more energy. What's driving this growth? Let's take a closer look.

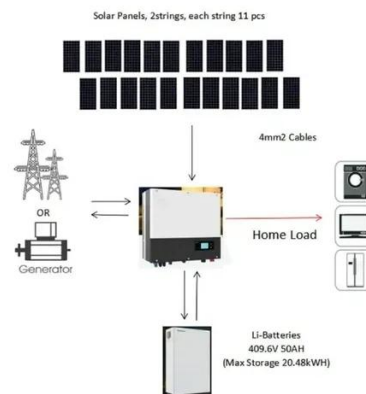


What Are The Dimensions of a Wind



Turbine?

The wind turbine blades are the elongated objects protruding from the center of the motor. They are anywhere from 50 meters to 120 meters (164 ft. to 393.7 ft.). Wind flows through the ...



[Wind Turbine Blades: How Big Are They Really? Find Out Now!](#)

Wondering how the massive sizes of wind turbine blades impact energy generation? Discover the surprising facts behind their evolution and performance.

How Big Is a Wind Turbine Blade?

How Big Is a Wind Turbine Blade? Understanding Scale and Impact The size of a wind turbine blade varies dramatically, but on average, modern land-based wind turbine blades range ...



[Wind Turbine Blade Size: How Big Are They and Why?](#)

Wind turbine blade size is a crucial factor in the efficiency and power output of wind energy systems. As technology advances, engineers aim to build larger blades that can capture ...



Contact Us

For catalog requests, pricing, or partnerships, please visit:

<https://id2market.eu>

Phone: +34 910 56 87 45

Email: info@id2market.eu

Scan the QR code to access our WhatsApp.

