



# Installation direction and angle of photovoltaic panels





## Overview

---

In general, solar panels should be installed so the sunlight hits them at as close to a perpendicular 90-degree angle for as long as possible during the day. To achieve that goal, most solar panels face the equator and are installed at an angle between 30 to 45 degrees relative to. East-West Orientations Offer Strategic Value: While producing 75-85% of south-facing output, east and west-facing panels can provide superior financial returns by aligning with time-of-use electricity rates and matching typical household consumption patterns. Latitude-Based Angle Calculation. When it comes to installing solar panels, angle and orientation are just as important as the panels themselves.



## Installation direction and angle of photovoltaic panels

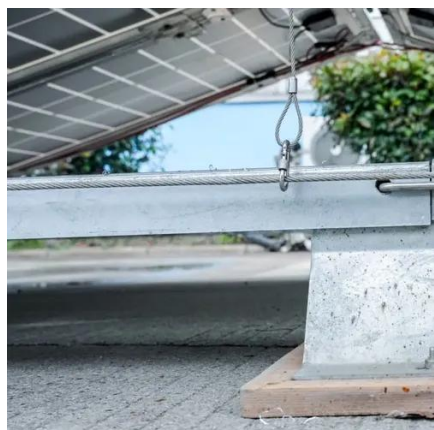


### [Solar Panel Direction & Orientation: 2025 Complete Guide](#)

Discover the optimal direction and angle for solar panels to maximize energy output. Complete guide with calculations, tools, and location-specific recommendations for 2025.

### [The Best Angle for Solar Panel Installation](#)

In general, solar panels should be installed so the sunlight hits them at as close to a perpendicular 90-degree angle for as long as possible during the day. To achieve that goal, most ...



### [Solar Panel Placement: Best Direction & Orientation Guide](#)

Discover the optimal solar panel direction, placement & orientation to maximize energy efficiency. Boost savings with expert tips for an ideal setup!

### [Best Angle for Solar Panel Installation: Complete Guide 2025](#)

Northern Hemisphere: The best direction for solar panels is true south. This ensures panels face the sun most of the day. Southern Hemisphere: Panels should face true north. East or West Facing Panels:

...



### Solar panel inclination angle, location and orientation

Optimization of the inclination, orientation and location of photovoltaic solar panels and solar collectors in a solar installation to maximize the use of renewable energy.



### How to Find the Best Orientation and Angle of Solar Panels?

Ideally, the angle of your solar panels should be equal or close to the latitude of where they are installed. As you go further north or south, the angle of the sun in the sky decreases. To efficiently capture ...



### **Solar Panel Direction and Angle**

To generate maximum electricity across 365 days, you can set up solar panels at a tilt angle which equals the latitude of a solar system's location.



### Solar panel inclination angle, location and



## orientation

In general, solar panels should be installed so the sunlight hits them at as close to a perpendicular 90-degree angle for as long as possible during the ...



## Best installation direction and angle of solar panels

When the sun's rays are maximized to the solar panel, the solar panel can achieve high efficiency in generating electricity. This dictates that the best direction to install solar panels should ...

## Solar Panel Best Angle , Tilt & Orientation Guide 2025

In this guide, we'll break down the science behind the best solar panel angle, explain how to calculate it based on latitude, show seasonal adjustments, and share competitor-winning insights ...



## **Optimal Solar Panel Angle: Maximizing Efficiency and Energy Output**

South-facing solar panels typically yield the highest energy production, while east-west facing roofs can still be effective. The direction of your solar panels is generally more important than ...



## Contact Us

---

For catalog requests, pricing, or partnerships, please visit:

<https://id2market.eu>

Phone: +34 910 56 87 45

Email: [info@id2market.eu](mailto:info@id2market.eu)

Scan the QR code to access our WhatsApp.

