



Intelligent Energy Storage Cabinet IP67 in the Yangtze River Economic Belt



Deye inverters and Deye batteries are more compatible.





Intelligent Energy Storage Cabinet IP67 in the Yangtze River Economic Belt

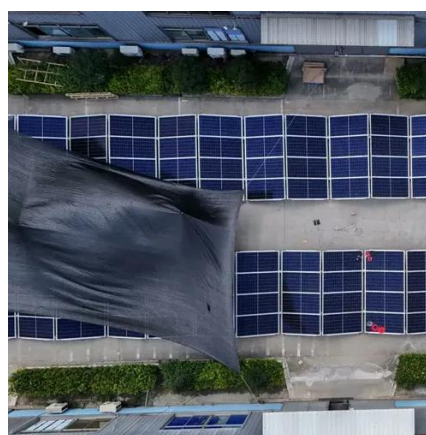


An Evaluation of the Yangtze River Economic Belt Manufacturing ...

Addressing this problem, this paper constructs an evaluation index system for the Yangtze River Economic Belt (YREB) intelligent manufacturing sector using eleven years (2008-2018) of

intelligent modular energy storage cabinet in the yangtze river

This article explores storage cabinet components and their versatile energy management applications, especially in grid/renewable integration. It details maritime export procedures - shipping ...



The impact of the digital economy on the industrial green

Based on panel data from 31 resource-based cities in the Yangtze River Economic Belt (YREB) from 2013 to 2022, this article uses a two-way fixed-effects model, intermediary effects ...

Spatiotemporal evolution characteristics and influencing factors of

This paper uses the two-stage NDEA-SBM model to calculate the energy, ecology, and economic (3E) efficiency of the Yangtze River Economic Belt (YREB) and analyze the spatial ...



Research on the dynamic evolution and influence factors of industrial

Improving the Yangtze River Economic Belt's industrial energy efficiency is not only an important measure to alleviate China's energy shortages but also a drive to promote green economic ...

Manufacturing Industrial Chain and Supply Chain Resilience in the

Using the entropy weight method, we measure manufacturing ICSC resilience across provinces and cities in the Yangtze River Economic Belt from 2017 to 2022 and further ...



Gigafactory - EnerVenue, Inc.

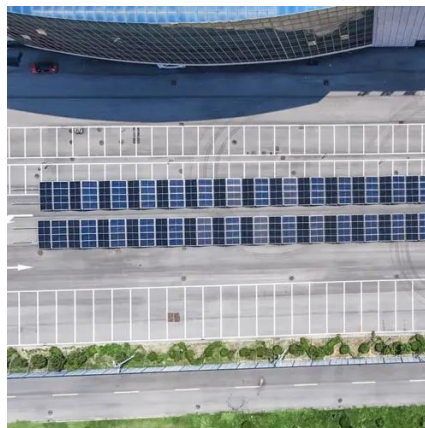
With significant increases to energy capacity, density, and power--as well as improved monitoring intelligence and temperature performance--the new ESVs offer an even more ...

An Evaluation of the Yangtze River



Economic Belt Manufacturing ...

An analysis of the results revealed that the level of intelligentization of the manufacturing industry of the YREB increases yearly, and that intelligent innovations are notably occurring at a ...



Investigating the effects of industrial transformation and

Based on industrial and commercial enterprise database, this study clarifies the effects of industrial transformation and agglomeration on IEE based on spatial Durbin model. From 2011 to ...

Evaluation of Energy Utilization Efficiency in the Yangtze River

For this purpose, this paper uses the super-efficiency SBM model, ML index and Tobit model considering undesired output to explore the energy efficiency and the main factors affecting it of nine ...





Contact Us

For catalog requests, pricing, or partnerships, please visit:

<https://id2market.eu>

Phone: +34 910 56 87 45

Email: info@id2market.eu

Scan the QR code to access our WhatsApp.

