



Intelligent Energy Storage Cabinet for Factories Wide Temperature Range





Overview

This fully integrated 100kW/215kWh system combines high-density battery storage with intelligent power management in a single, factory-assembled unit - delivering unmatched performance and reliability for demanding commercial applications. Introducing GSL Energy's latest innovation — the 125kW 261kWh Liquid-Cooled Energy Storage System, designed to meet the high-performance, reliability, and safety demands of industrial and commercial energy storage applications. This advanced all-in-one system integrates five high-capacity 314Ah. AZE's All-In-One C&I ESS Cabinet represents the cutting edge in industrial energy storage technology. Whether for utility-scale projects, industrial applications, or. Our Cooli Smart 100kW/215kWh Energy Storage Cabinet advantage □ 15 Years Professional Factory with 3 buildings. ISO9001, UL, CEI-021, IEC, CE, UN38. A+ grade full new battery cells. Industrial and commercial energy storage cabinets are a modular and integrated energy storage system specifically designed for industrial and commercial scenarios such as factories, parks, shopping malls, data centers, etc. They are used to store electrical energy and release it when needed.



Intelligent Energy Storage Cabinet for Factories Wide Temperature R



[INDUSTRIAL AND COMMERCIAL ENERGY STORAGE CABINETS](#)

Industrial and commercial energy storage cabinets are a modular and integrated energy storage system specifically designed for industrial and commercial scenarios such as factories, parks, shopping ...

GSL Energy All-in-One 125kW 261kWh Liquid-Cooled Industrial Energy

Scalable up to 10 units in parallel (totaling 2610kWh), it is ideal for energy-intensive facilities such as factories, shopping malls, farms, microgrids, and EV charging stations.



[Industrial Energy Storage Cabinet Selection Guide](#)

For industrial energy storage cabinets, incorporating fire resistant materials alongside compartmentalized module designs and automatic suppression systems is essential when it comes ...



[Cabinet Energy Storage System , VREMT](#)

Standardized and scalable design for long-lasting, intelligent energy storage. Compact footprint with high single-cell energy density. Single cabinet footprint reduced by over 20%, with multi-unit scalability for ...



High-Performance Energy Storage Cabinet Solutions , SLENERGY

SLENERGY provides advanced energy storage cabinets with intelligent control, high safety, and long-term performance for commercial and industrial power applications.



All-In-One C& I ESS Cabinet , 100kW/215kWh , AZE

Perfect for factories, data centers, EV charging stations, and microgrids, this plug-and-play ESS cabinet provides peak shaving, backup power, and renewable energy optimization --all in a compact, easy ...



Revolutionizing Energy Storage: TLS Energy's 100kW/233kWh All-in ...

Featuring an advanced battery management system (BMS), power conversion system (PCS), liquid cooling, and intelligent energy management (EMS), this energy storage cabinet ...

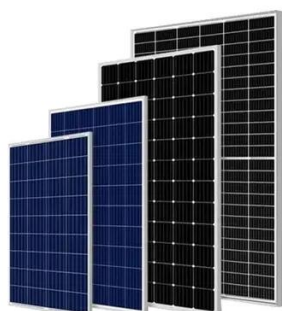


All-in-One Energy Storage Cabinet &



BESS Cabinets , Modular, ...

AZE's All-in-One Energy Storage Cabinet & BESS Cabinets offer modular, scalable, and safe energy storage solutions. Featuring lithium-ion batteries, smart BMS, and thermal management, they're ideal ...



[Cooli Smart 100KW/215KWH Energy Storage Air-cooled Cabinet](#)

Unlock energy independence and maximize ROI with the Cooli Smart 100kW/215kWh Air-Cooled Energy Storage Cabinet. Engineered for commercial and industrial resilience, this high-density ...

[EK Photovoltaic Micro Station Energy Cabinet](#)

The EK photovoltaic micro-station energy storage cabinet has redefined the power supply mode of distributed energy scenarios with its core advantages of "intelligent integration, multi-energy ...





Contact Us

For catalog requests, pricing, or partnerships, please visit:

<https://id2market.eu>

Phone: +34 910 56 87 45

Email: info@id2market.eu

Scan the QR code to access our WhatsApp.

