



# Introduction to Flywheel Energy Storage System





## Overview

---

A typical system consists of a flywheel supported by connected to a . The flywheel and sometimes motor-generator may be enclosed in a to reduce friction and energy loss. First-generation flywheel energy-storage systems use a large flywheel rotating on mechanical bearings. Newer systems use composite that have a hi.



## Introduction to Flywheel Energy Storage System

---



### Introduction , Springer Nature Link

In the 1960s and 1970s, the charming simplicity of the FESS's underlying physical principle and the long list of theoretical advantages compared to chemical energy storage devices ...

### [What Is a Flywheel Energy Storage System?](#)

At its core, a flywheel energy storage system stores energy in the form of rotational kinetic energy. The system consists of a large rotating mass, or rotor, that spins inside a vacuum ...



### [Flywheel Energy Storage: A Comprehensive Guide](#)

In this comprehensive guide, we will explore the definition, principles, history, and evolution of flywheel energy storage, as well as its benefits, applications, technical considerations, ...



### Technology: Flywheel Energy Storage

Flywheel Energy Storage Systems (FESS) rely on a mechanical working principle: An electric motor is used to spin a rotor of high inertia up to 20,000-50,000 rpm.



## Flywheel energy storage

Overview  
Main components  
Physical characteristics  
Applications  
Comparison to electric batteries  
See also  
Further reading  
External links

A typical system consists of a flywheel supported by rolling-element bearing connected to a motor-generator. The flywheel and sometimes motor-generator may be enclosed in a vacuum chamber to reduce friction and energy loss. First-generation flywheel energy-storage systems use a large steel flywheel rotating on mechanical bearings. Newer systems use carbon-fiber composite rotors that have a hi...

## Understanding the Flywheel: The Heart of Rotational Energy Storage

...

Flywheels are mechanical devices designed to store energy in the form of kinetic energy through the rotation of a mass. When energy is applied to the flywheel, it spins, converting electrical ...



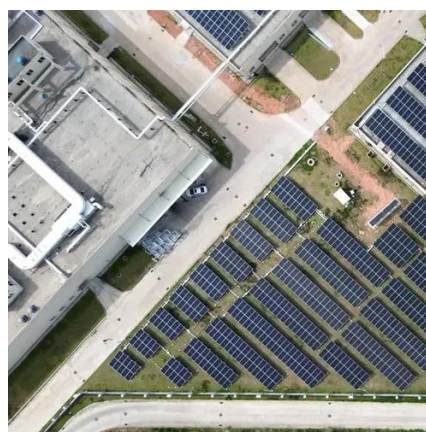
## A review of flywheel energy storage systems: state of the art and

Energy storage systems (ESS) play an essential role in providing continuous and high-quality power. ESSs store intermittent renewable energy to create reliable micro-grids that run ...



## Flywheel energy storage

First-generation flywheel energy-storage systems use a large steel flywheel rotating on mechanical bearings. Newer systems use carbon-fiber composite rotors that have a higher tensile strength than ...



## Flywheel energy storage systems: A critical review on technologies

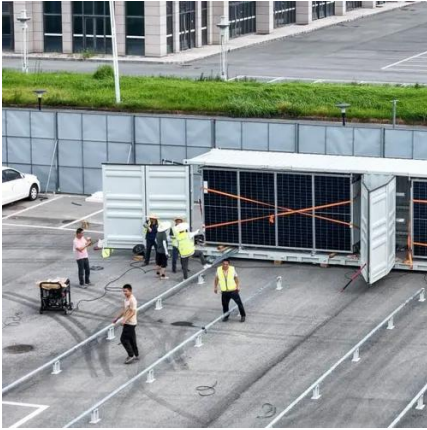
In this article, an overview of the FESS has been discussed concerning its background theory, structure with its associated components, characteristics, applications, cost model, control ...

## Flywheel Energy Storage Systems and their Applications: A Review

Flywheel energy storage systems have gained increased popularity as a method of environmentally friendly energy storage. Flywheels store energy in mechanical rotational energy to be then ...



[Introduction to flywheel energy storage](#)



## systems

This chapter presents an introduction to flywheel energy storage systems (FESSs) by discussing recent advances in designs, materials, and technologies of FESSs. It also explores cutting-edge ...



## Contact Us

---

For catalog requests, pricing, or partnerships, please visit:

<https://id2market.eu>

Phone: +34 910 56 87 45

Email: [info@id2market.eu](mailto:info@id2market.eu)

Scan the QR code to access our WhatsApp.

