



Inverter 12v 24v to 220v





Inverter 12v 24v to 220v



[1500W 12V 24V 48V DC to AC 220V Pure Sine Wave Inverter](#)

1500W 220V DC to AC Pure Sine Wave Inverter, 92% efficient, for 12V, 24V, 48V battery systems with lead-acid or lithium battery, CE certified with 1 year warranty. This 1500W Inverter can reverse the ...

Amazon : 1200W Car Inverter DC 12V/24V to AC 220V Converter ...

This versatile power inverter operates at both 12V and 24V input voltages, providing a stable 220V output. With an impressive output frequency of 50Hz, it ensures compatibility with a wide ...



Amazon : Inverter 24v To 220v

6000W Solar Hybrid Inverter, 12V/24V/48V/60V/72V/96V DC to 110V/220V Pure Sine Wave Power Inverter, With 2 AC Outlets, LCD Display, For Lead Acid/Lithium Batteries for Off ...

Inverter 12v To 220v

CHENGSI 200 Watt Pure Sine Wave Power Inverter DC 12V to AC 220V or DC 24V to AC 220V Converter, for Home, RV, Truck, Off-Grid Solar Power Inverter, Maximum Power Output of 1500W



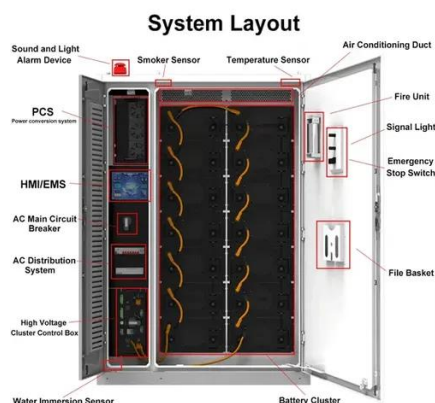
[Pure Sine Inverter 12V 24V 48V 60V to AC 220V 110V 8000W](#)

About this Item Model supports 12V 24V 48V and 60V DC input with AC 220V 110V output making it compatible with a wide range of vehicles and solar power systems power capacity available in ...



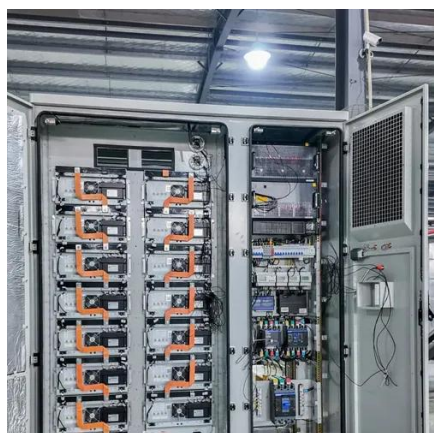
[12 volt 220 volt ac inverter , Newegg](#)

Search Newegg for 12 volt 220 volt ac inverter. Get fast shipping and top-rated customer service.



Best 12 Volt to 220 Volt Pure Sine Wave Inverters for Home and Travel

Finding a reliable 12 volt to 220 volt inverter is essential for converting DC power from batteries into steady AC power for various applications. Whether for home backup, RV trips, ...



[1500 Watt Modified Sine Wave Inverter,](#)



12VDC to 220VAC

Designed for high performance and reliability, this 1500 watt modified sine wave inverter is suitable for a variety of home and industrial applications. It supports 12V or 24V battery input and can output 200V ...



Best 24V to 220V Power Inverters for Home, RV, and Solar Systems

This inverter supports both 12V and 24V input voltages and outputs a stable pure sine wave signal at 220VAC with conversion efficiency over 90%, which minimizes energy loss.

Best 12V to 220V Power Inverters for Cars, RVs, and Solar Systems

Finding the right power inverter to convert 12V DC to 220V AC is essential for powering electronics from a vehicle or off-grid solar source. This guide covers top 5 reliable inverters, each ...





Contact Us

For catalog requests, pricing, or partnerships, please visit:

<https://id2market.eu>

Phone: +34 910 56 87 45

Email: info@id2market.eu

Scan the QR code to access our WhatsApp.

