



# Inverter DC to AC ratio





## Inverter DC to AC ratio

---

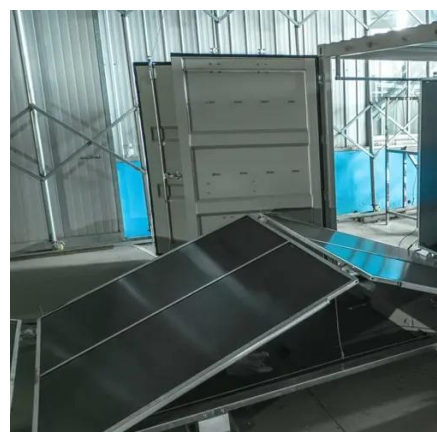


### DC/AC Ratio Explained: What It Means and the Best Range for Solar

Learn what DC/AC ratio means for solar systems, the ideal DC/AC range, and how proper design can optimize solar energy output, system life, and return on investment. Expert guide ...

### [The Ultimate Guide to DC to AC Ratio for Solar Panels](#)

The DC to AC ratio, also known as the "inverter loading ratio" or "oversizing ratio," is a fundamental metric in solar design. It is simply the ratio of your solar panel array's total direct current (DC) ...

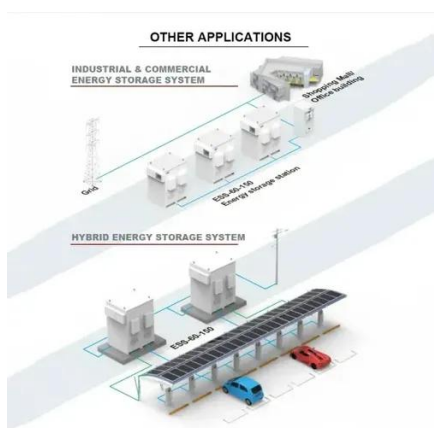


### [Inverter Sizing-Determining The Perfect DC:AC Ratio!](#)

The three pieces of information needed to determine the optimal balance are 1) the relationship between production output and the DC:AC ratio, 2) the cost of adding solar panel ...

### [Best 6 Key Insights into DC and AC Ratio for Solar Power](#)

One of the most critical parameters in solar engineering is the DC and AC ratio, often referred to as the Inverter Loading Ratio (ILR).



## Dc To Ac Ratio Calculator

To calculate the DC to AC ratio, divide the DC output of the solar panels by the AC capacity of the inverter. A higher ratio indicates that the solar panels are capable of producing more ...

## DC/AC Ratio Guide for Solar Systems: Best Inverter Sizing Tips

The DC/AC ratio is the size relationship between the total DC power of your solar panels and the AC power rating of your inverter. In other words, it shows how much solar panel capacity is installed ...



## [The Ultimate Guide to DC/AC Ratio and Inverter Loading](#)

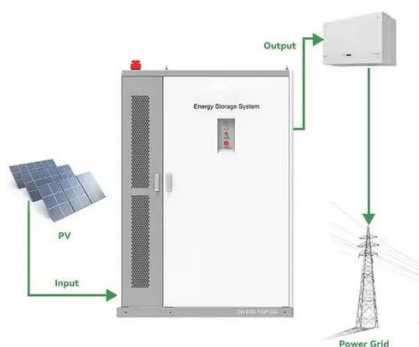
DC/AC ratio, also called inverter loading ratio (ILR), is the array's STC power divided by the inverter's AC nameplate power.  $ILR = P_{DC, STC} / P_{AC, rated}$ . A higher ILR feeds more energy ...

## [DC/AC Ratio: Choosing the Right Size](#)



## Solar Inverter

The DC-to-AC ratio, also known as the Inverter Loading Ratio (ILR), is the ratio of the installed DC capacity of your solar panels to the AC power rating of your inverter.



## Understanding DC/AC Ratio

A healthy design will typically have a DC/AC ratio of 1.25. The reason for this is that about less than 1% of the energy produced by the PV array throughout its life will be at a power above 80% capacity.

## Understanding Inverter Sizing and DC/AC Ratio in Solar PV Systems

Solar panels produce variable DC power, while inverters deliver fixed AC power. Maintaining a DC/AC ratio of 1.0-1.2 ensures efficient inverter operation and maximizes energy ...





## Contact Us

---

For catalog requests, pricing, or partnerships, please visit:

<https://id2market.eu>

Phone: +34 910 56 87 45

Email: [info@id2market.eu](mailto:info@id2market.eu)

Scan the QR code to access our WhatsApp.

